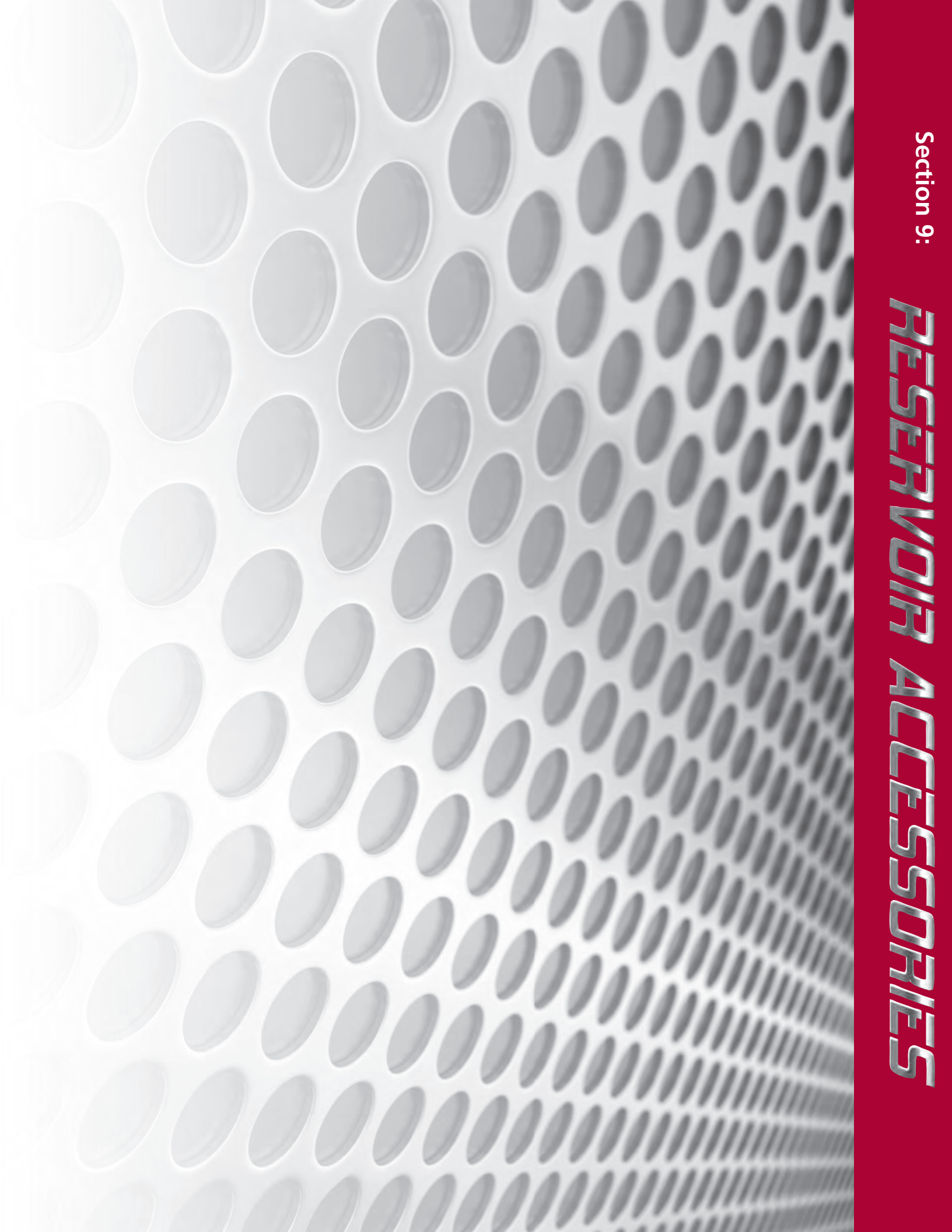


Section 9:

RESERVOIR ACCESSORIES



Section 9 Reservoir Accessories

Reservoir Accessories

	Page
Air Breathers	307
Suction Separators and Strainers	324
Oil Sight Glasses	325

Schroeder Reservoir Accessories

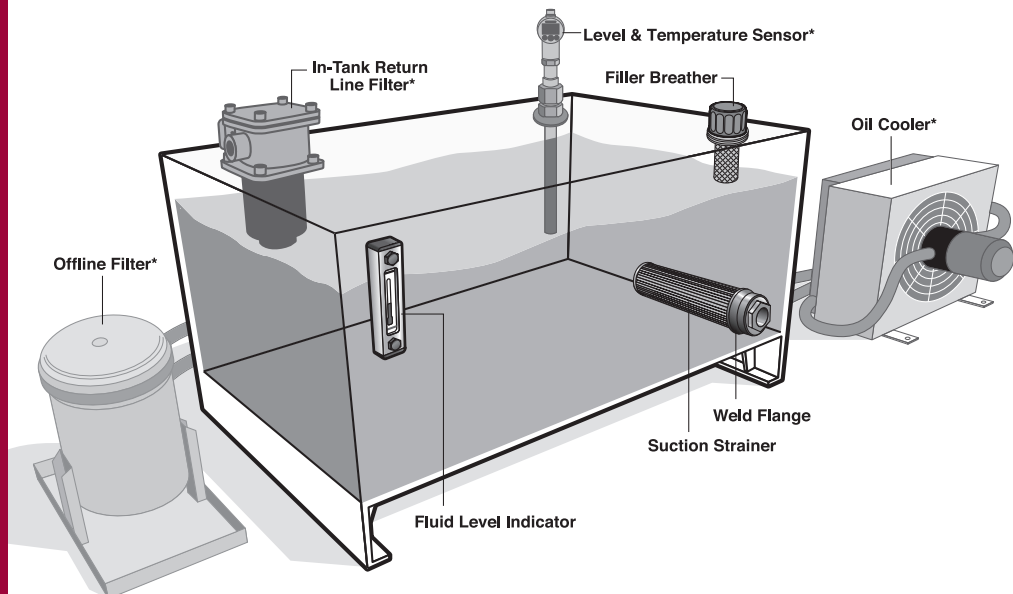
A hydraulic systems reservoir can play a significant role in the ingress of contamination into the system. Concurrently, the reservoir presents great opportunities to correct the negative fluid conditions. The proper application of Schroeder reservoir accessories will greatly increase a system's cleanliness level. It's good to remember this rule of thumb: "it costs 10 times more to remove contamination from your system than it does to exclude it from your system."

Installing an efficient air breather is critical yet often overlooked when system filtration is considered. In systems operating in dusty atmospheric conditions, the use of an *air breather* will minimize the ingestion of airborne particles when reservoir levels experience significant change. The sole purpose of an air breather, as with any filtration device, is to reduce the cost of operation. By lowering the rate of ingress, the contamination level of the system will be reduced and the service life of the system fluid filters will be increased.

The fluid replenishment process is another opportunity for contamination to enter the system. Schroeder *filler breathers* can prevent large contaminants from entering the tank during filling. Most new oil is "dirty" meaning it does not meet the cleanliness recommendations of most components within a system when it is delivered from the manufacturer. Removal of the fine particles can be easily accomplished by using Schroeder filter carts. More information regarding filters carts can be found in the filter system catalog.

Protecting the pump is an integral step in ensuring system longevity. Installing a suction strainer will stop the larger pieces of unwanted debris from entering the suction line causing catastrophic problems downstream. Schroeder's *Magnetic Suction Separators* offer unique protection for pumps suction line from all sizes of ferrous particles without starving the pump.

Designed for simple installation on most equipment, Schroeder *Oil Sight Glasses* provide maintenance and lubrication management professionals a complete and immediate visual oil analysis. Although easy detection and discharge of water contamination are leading benefits, operators can also visually monitor the oil level and condition as discoloration or debris.



Air Breathers

Schroeder offers high quality breathers to effectively combat the ingestion of airborne contamination and moisture, therefore increasing the efficiency and reliability of the system.

Available breather series are ABF, PAB, SAB, and D-AB. Many are available with filler strainer, dipstick, indicator and check/relief valve options. The ABC air breather check can take the guesswork out of when to change your breather.

Air Breathers

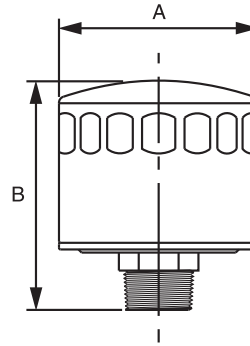
Suction Separators and Strainers

Oil Sight Glasses

ABF-3/10 ABF-3/10-M-P12 ABF-S40 ABF-S40-M-P12
 MBF-3-M-P20 MBF-10-M-P20

Features and Benefits

- Durable metal housing
- Optional dipstick or filler strainer
- Large pleated surface areas offers high dirt holding and air flow capacity
- NPT or Flange adapter available
- Available with three micron rating



Breathers with NPT Adapters



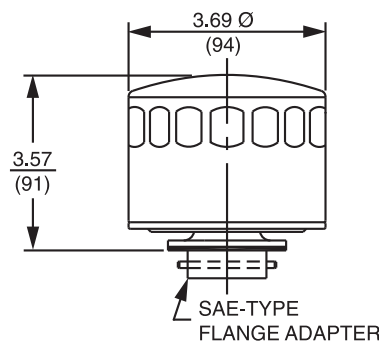
Model Number	A	B	Adapter Type	Minimal Micron Retention	Normal Capacity	Air Flow/psi Drop
ABF-3/10	3.69 (94)	4.28 (109)	.75" NPT Nylon	3	40 SCFM	0.4 psi at 20 SCFM-
ABF-3/10-M-P12			.75" NPT Steel	3		1.25 psi at 40 SCFM
ABF-S40	3.69 (94)	4.28 (109)	.75" NPT Nylon	40	40 SCFM	0.29 psi at 20 SCFM-
ABF-S40-M-P12			.75" NPT Steel	40		1.06 psi at 40 SCFM
MBF-3-M-P20	5.06 (128)	8.31 (211)	1.25" NPT Steel	3	200 SCFM	0.3 psi at 70 SCFM-
MBF-10-M-P20				10		1.25 psi at 200 SCFM

SCFM = Standard Cubic Feet per Minute

Specifications

ABF-3/10-F ABF-S40-F

These breathers are designed for retrofit on hydraulic reservoirs using the SAE-type flange fill port assembly.



Breathers with Flange Adapters



Air Breathers

Breathers with Dipstick

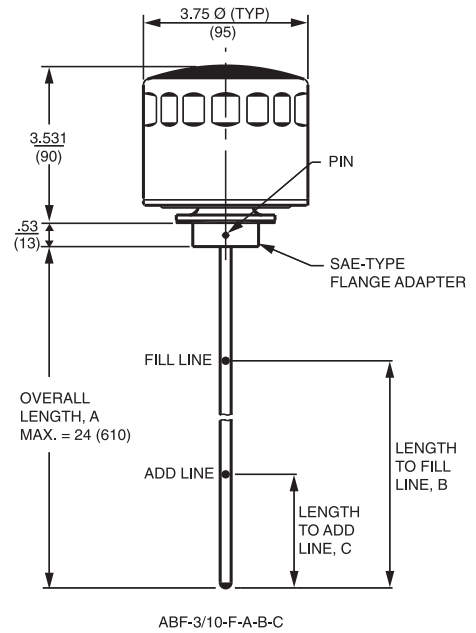
ABF-3/10FA, B, C ABF-S40FA, B, C

The air breathers above are also available with a dipstick up to 24 inches in length. The dimensions to the "add line" and the "fill line" must be specified in the model number ABF-3/10-F, A, B, C, where:

- A = overall length of the dipstick in inches
- B = length from tip of dipstick to fill line in inches
- C = length from tip of dipstick to add line in inches

For safety reasons, the tip of the dipstick is rounded. No tools are needed for installation and removal. A quarter turn should snugly seal the breather in place.

Minimum order quantity is 12.



Filler Breather with Strainer

**ABF-3/10-S
ABF-3/10-S6**

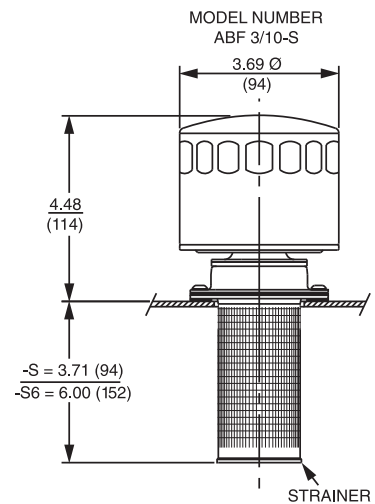
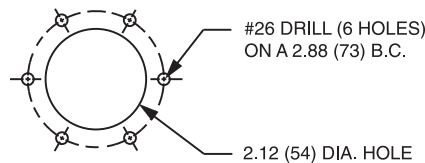
**ABF-S40-S
ABF-S40-S6**

The strainer used here is #24 mesh and is available in the lengths shown.

Model Number	Adapter Type	Minimal Micron Retention	Normal Capacity	Air Flow/psi Drop
ABF-3/10-S ABF-3/10-S6	SAE-type flange	10	40 SCFM	0.4 psi at 20 SCFM - 1.25 psi at 40 SCFM
ABF-S40-S ABF-S40-S6	SAE-type flange	40	40 SCFM	0.29 psi at 20 SCFM - 1.06 psi at 40 SCFM

SCFM = Standard Cubic Feet per Minute

To replace breather only, order ABF-3/10-F or ABF-S40-F.

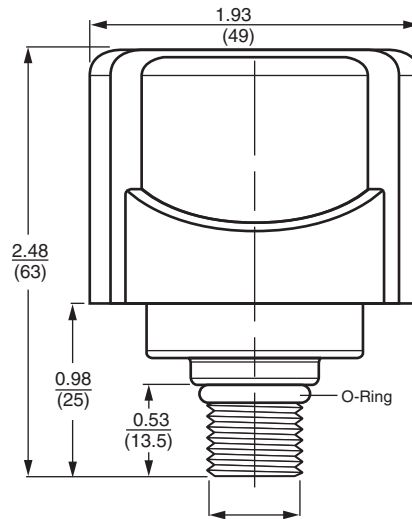


SAME DAY SHIPMENT MODEL AVAILABLE!

Air Breathers

Features and Benefits

- Durable synthetic Nylon 6 housing
- Phenolic resin impregnated filter element
- Standard Buna N O-Ring
- Integrated anti-splash insert
- Optional relief valve for pressurized reservoir
- Optional customer logo (contact factory)
- Optional dipstick (contact factory)



PAB1 Breather



Air Breathers

Suction Separators and Strainers

Oil Sight Glasses

Specifications

Max. Flow Rate: 10 SCFM / 80 gpm

Filtration Rating: 3 µm absolute

Operational Temperature: -22° to 212°F (-30° to 100°C)

How to Build a Valid Model Number for a Schroeder PAB1:

BOX 1	BOX 2	BOX 3	BOX 4	BOX 5	BOX 6	BOX 7
PAB1	-	-	-	-	-	-

Example: NOTE: One option per box

BOX 1	BOX 2	BOX 3	BOX 4	BOX 5	BOX 6	BOX 7
PAB1	-	P	3	-	.5	R6

= PAB1P3.5R6

BOX 1	BOX 2	BOX 3	BOX 4	BOX 5	BOX 6
Model Number	Replacement Element	Connection Type	Filtration Rating	Gauge Option	Connection Size
PAB1	Omit	P = NPT S = SAE	3	N = No Gauge	.5 = NPT Only 12 = SAE Only

BOX 7

Options
AS = Anti-Splash R6 = 6 psi relief valve D = Dipstick

Filter Model Number Selection

Same Day Shipment Model

NOTE:

Contact factory for lead time and minimum order quantity for other models.

Air Breathers

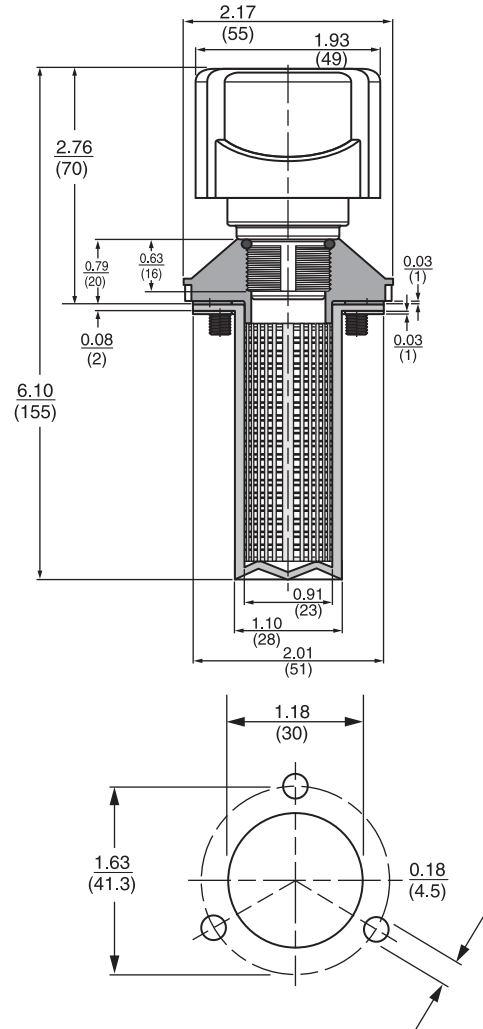
SAME DAY SHIPMENT MODEL AVAILABLE!

PABS1 Breather



Features and Benefits

- Durable synthetic Nylon 6 housing
- Phenolic resin impregnated filter element
- Standard Buna N O-Ring
- Integrated anti-splash insert
- Optional relief valve for pressurized reservoir
- Optional customer logo (contact factory)



Specifications

Max. Flow Rate: 10 SCFM / 80 gpm

Filtration Rating: 3 μ m absolute

Operational Temperature: -22° to 212°F (-30° to 100°C)

Filter Model Number Selection

Same Day Shipment Model

How to Build a Valid Model Number for a Schroeder PABS1:

BOX 1	BOX 2	BOX 3	BOX 4	BOX 5	BOX 6	BOX 7
PABS1	-	-	-	-	-	-

Example: NOTE: One option per box

BOX 1	BOX 2	BOX 3	BOX 4	BOX 5	BOX 6	BOX 7
PABS1	-	F	3	-	1	R6 = PABS1F31R6

BOX 1	BOX 2	BOX 3	BOX 4	BOX 5	BOX 6
Model Number	Replacement Element	Connection Type	Filtration Rating	Gauge Option	Connection Size
PABS1	Omit	F = Flanged	3	N = No Gauge	1 = Standard

BOX 7
Options
R6 = 6 psi relief valve
Replacement Breather: PAB1M3N22

NOTE:

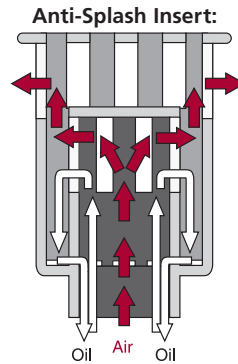
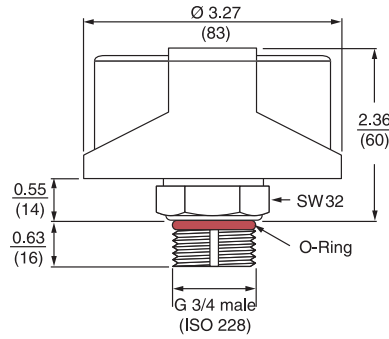
Contact factory for lead time and minimum order quantity for other models.

SAME DAY SHIPMENT MODEL AVAILABLE!

Air Breathers

Features and Benefits

- Durable synthetic Nylon 6 housing
- Phenolic resin impregnated filter element
- Standard Buna N O-Ring
- Integrated anti-splash insert
- Optional relief valve for pressurized reservoir
- Optional customer logo (contact factory)
- Optional dipstick (contact factory)



PAB3 Breather



Air Breathers

Suction Separators and Strainers

Oil Sight Glasses

Max. Flow Rate: 25 SCFM / 200 gpm
Filtration Rating: 3 μm absolute
Operational Temperature: -22° to 212°F (-30° to 100°C)

Specifications

How to Build a Valid Model Number for a Schroeder PAB3:

BOX 1	BOX 2	BOX 3	BOX 4	BOX 5	BOX 6	BOX 7
PAB3	-	-	-	-	-	-

Example: NOTE: One option per box

BOX 1	BOX 2	BOX 3	BOX 4	BOX 5	BOX 6	BOX 7
PAB3	-	P	-	3	-	N - 12 - R6

= PAB3P3N12R6

BOX 1	BOX 2	BOX 3	BOX 4	BOX 5	BOX 6
Model Number	Replacement Element	Connection Type	Filtration Rating	Gauge Option	Connection Size
PAB3	Omit	P = NPT S = SAE	3	N = No Gauge	.75 = NPT Only 12 = SAE Only

BOX 7
Options
AS = Anti-Splash R6 = 6 psi relief valve D = Dipstick

Filter Model Number Selection

Same Day Shipment Model

NOTE:
Contact factory for lead time and minimum order quantity for other models.

Air Breathers

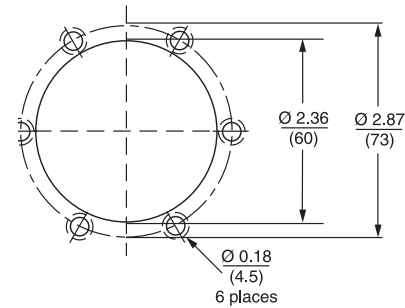
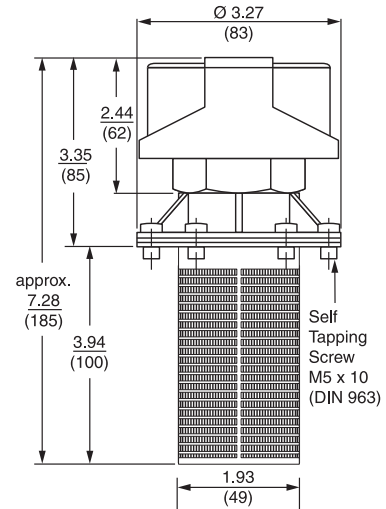
SAME DAY SHIPMENT MODEL AVAILABLE!

PABS3 Breather



Features and Benefits

- Durable synthetic Nylon 6 housing
- Phenolic resin impregnated filter element
- Standard Buna N O-Ring
- Integrated anti-splash insert
- Optional relief valve for pressurized reservoir
- Optional customer logo (contact factory)



Specifications

Max. Flow Rate: 25 SCFM / 200 gpm

Filtration Rating: 3 μ m absolute

Operational Temperature: -22° to 212°F (-30° to 100°C)

Filter Model Number Selection

Same Day Shipment Model

How to Build a Valid Model Number for a Schroeder PABS3:

BOX 1	BOX 2	BOX 3	BOX 4	BOX 5	BOX 6	BOX 7
PABS3	-	-	-	-	-	-

Example: *NOTE: One option per box*

BOX 1	BOX 2	BOX 3	BOX 4	BOX 5	BOX 6	BOX 7
PABS3	-	F	3	-	1	R6 = PABS3F31R6

BOX 1	BOX 2	BOX 3	BOX 4	BOX 5	BOX 6
Model Number	Replacement Element	Connection Type	Filtration Rating	Gauge Option	Connection Size
PABS3	Omit	F = Flanged	3	N = No Gauge	1 = Standard

BOX 7

Options

R6 = 6 psi relief valve

Replacement Breather: PAB3M3N42

NOTE:

Contact factory for lead time and minimum order quantity for other models.

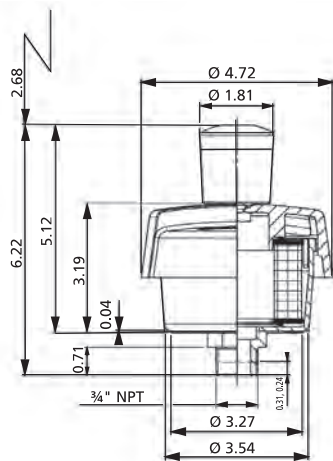
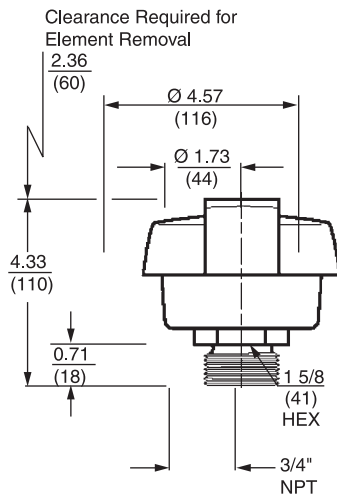
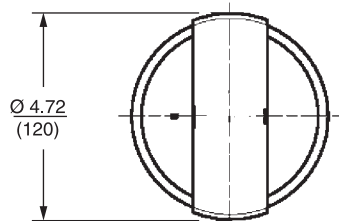
SAME DAY SHIPMENT MODEL AVAILABLE!

Air Breathers

Features and Benefits

- Durable synthetic Nylon 6 housing
- Phenolic resin impregnated filter element
- Standard Buna N O-Ring
- Integrated anti-splash insert
- Optional customer logo (contact factory)

Max. Flow Rate: 65 SCFM / 500 gpm
Filtration Rating: 3 µm
Operational Temperature: -22° to 212°F (-30° to 100°C)
Range of Indication: 0.5 psi



How to Build a Valid Model Number for a Schroeder PAB7:

BOX 1	BOX 2	BOX 3	BOX 4	BOX 5	BOX 6	BOX 7
PAB7	-	-	-	-	-	-

Example: NOTE: One option per box

BOX 1	BOX 2	BOX 3	BOX 4	BOX 5	BOX 6	BOX 7
PAB7	- R	-	- 3	-	- .75	- AS = PAB7R3.75AS

BOX 1 Model Number PAB7	BOX 2 Replacement Element R = Replacement Elements	BOX 3 Connection Type P = NPT S = SAE	BOX 4 Filtration Rating 3	BOX 5 Gauge Option N = No Gauge W = With Gauge	BOX 6 Connection Size .75 = NPT Only 16 = SAE Only	BOX 7 Options AS = Anti-Splash Omit = None
--------------------------------------	---	---	--	--	--	--

Replacement Elements: R-PAB7-3

PAB7 Breather

Air Breathers



Suction Separators and Strainers

Oil Sight Glasses

Specifications

Filter Model Number Selection

Same Day Shipment Model

NOTE: Contact factory for lead time and minimum order quantity for other models.

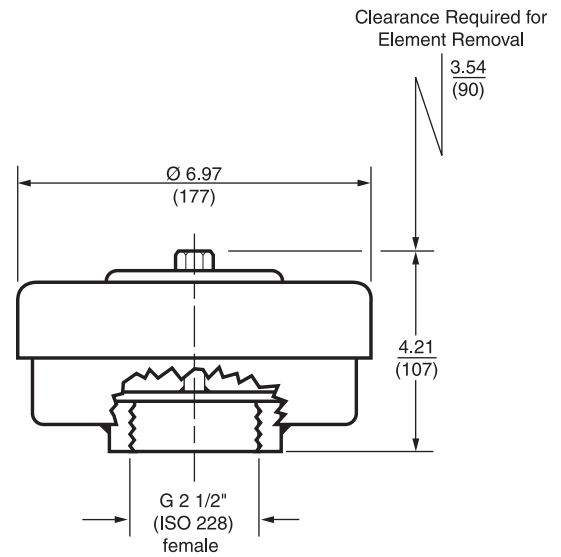
Air Breathers

SAB22 Breather



Features and Benefits

- Durable steel housing
- Wide range of flow rates
- Replaceable element



Specifications

Max. Flow Rate: 220 SCFM / 1600 gpm

Filtration Rating: 3 μm absolute, Phenolic resin impregnated filter element

Connection: G2 1/2" female thread

Lid: Removable lid to access fill port

Filter Model Number Selection

How to Build a Valid Model Number for a Schroeder SAB22:

BOX 1	BOX 2	BOX 3	BOX 4	BOX 5	BOX 6
SAB22	-	-	-	-	-

Example: *NOTE: One option per box*

BOX 1	BOX 2	BOX 3	BOX 4	BOX 5	BOX 6
SAB22	- R	- G	- 3	- N	- 2.5

= SAB22RG3N2.5

BOX 1	BOX 2	BOX 3	BOX 4	BOX 5
Model Number	Replacement Element	Connection Type	Filtration Rating	Gauge Option
SAB22	R = Replacement Elements	G = BSPP	3	N = No Gauge

BOX 6
Connection Size
2.5 = Female BSPP

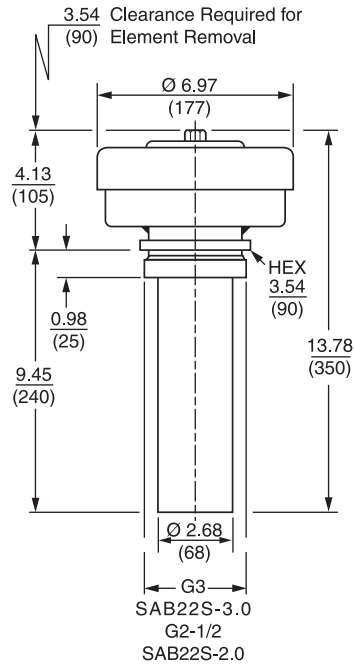
Replacement Elements: R-SAB22-3

Air Breathers

Air Breathers

Features and Benefits

- Durable steel housing
- Wide range of flow rates
- Replaceable element

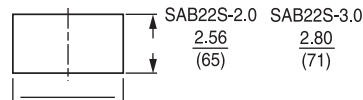


SABS22 Breather



Suction Separators and Strainers

Oil Sight Glasses



Reservoir opening for weld ring
 SAB22S-2.0 $\varnothing 3.46$ (88)
 SAB22S-3.0 $\varnothing 3.98$ (101)

Max. Flow Rate: 220 SCFM / 1600 gpm

Filtration Rating: 3 μ m absolute, Phenolic resin impregnated filter element

Connection: G2 1/2" female thread

Lid: Removable lid to access fill port

Specifications

How to Build a Valid Model Number for a Schroeder SABS22:



Example: NOTE: One option per box



BOX 1	BOX 2	BOX 3	BOX 4	BOX 5
Model Number	Replacement Element	Connection Type	Filtration Rating	Gauge Option
SABS22	R = Replacement Elements	G = BSPP	3	N = No Gauge

BOX 6
Connection Size
2.5 = Female BSPP

Replacement Elements: R-SAB22-3

Filter Model Number Selection

Air Breathers

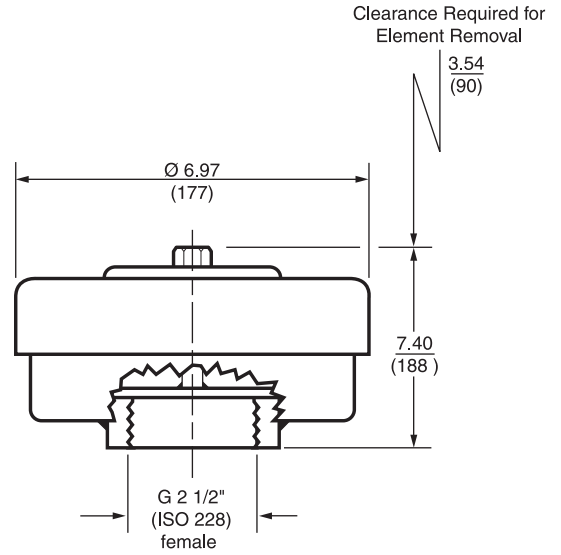
SAME DAY SHIPMENT MODEL AVAILABLE!

SAB35 Breather



Features and Benefits

- Durable steel housing
- Wide range of flow rates
- Replaceable element



Specifications

Max. Flow Rate: 350 SCFM / 2650 gpm

Filtration Rating: 3 μm absolute, Phenolic resin impregnated filter element

Connection: G2 1/2" female thread

Lid: Removable lid to access fill port

Filter Model Number Selection

Same Day Shipment Model

How to Build a Valid Model Number for a Schroeder SAB35:

BOX 1	BOX 2	BOX 3	BOX 4	BOX 5	BOX 6
SAB35	-	-	-	-	-

Example: *NOTE: One option per box*

BOX 1	BOX 2	BOX 3	BOX 4	BOX 5	BOX 6
SAB35	- R	- G	- 3	- N	- 2.5 = SAB35RG3N2.5

BOX 1	BOX 2	BOX 3	BOX 4	BOX 5
Model Number	Replacement Element	Connection Type	Filtration Rating	Gauge Option
SAB35	R = Replacement Elements	G = BSPP	3	N = No Gauge

BOX 6
Connection Size
2.5 = Female BSPP

Replacement Elements: R-SAB22-3 (2 per breather)

NOTE:

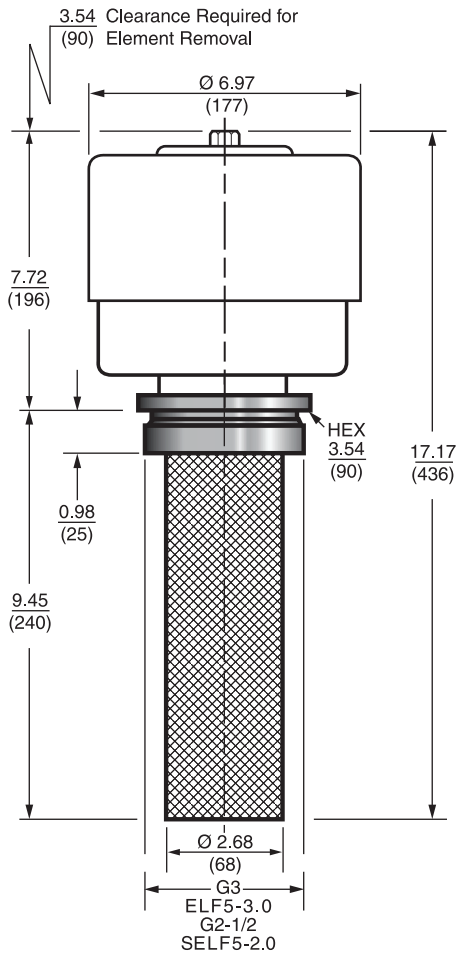
Contact factory for lead time and minimum order quantity for other models.

Air Breathers

Air Breathers

Features and Benefits

- Durable steel housing
- Wide range of flow rates
- Replaceable element



SABS35 Breather



Suction Separators and Strainers

Oil Sight Glasses

Max. Flow Rate: 350 SCFM / 2650 gpm

Filtration Rating: 3 μ m absolute, Phenolic resin impregnated filter element

Connection: G2 1/2" female thread

Lid: Removable lid to access fill port

Specifications

How to Build a Valid Model Number for a Schroeder SABS35:

BOX 1	BOX 2	BOX 3	BOX 4	BOX 5	BOX 6
SABS35	-	-	-	-	-

Example: NOTE: One option per box

BOX 1	BOX 2	BOX 3	BOX 4	BOX 5	BOX 6
SABS35	- R	- G	- 3	- N	-

= SABS35RG3N

BOX 1	BOX 2	BOX 3	BOX 4	BOX 5
Model Number	Replacement Element	Connection Type	Filtration Rating	Gauge Option
SABS35	R = Replacement Elements	G = BSPP	3	N = No Gauge

BOX 6
Connection Size
2.5 = Female BSPP

Replacement Elements:	R-SAB22-3 (2 per breather)
-----------------------	----------------------------

Filter Model Number Selection

NOTE:

Contact factory for lead time and minimum order quantity for other models.

Air Breathers

SAB70 Breather

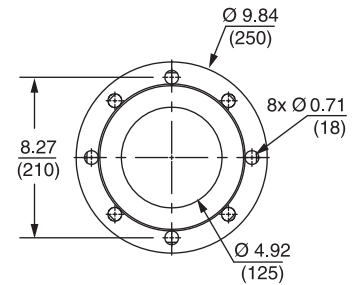
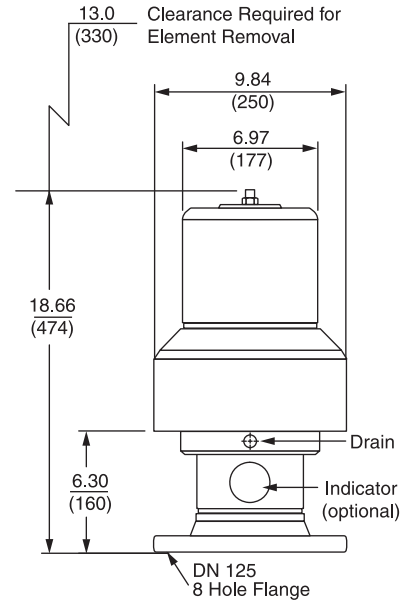
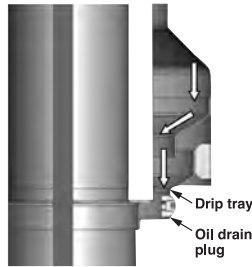


Features and Benefits

- Ideal for large reservoir with high return flow
- Durable steel housing
- Replaceable element
- Unique Oil Mist Trap design
- Optional pressure indicator

Oil Mist Trap

The oil mist in the filter is collected in a "drip tray" and is returned safely to the tank, or it can be drained via an oil drain plug.



Specifications

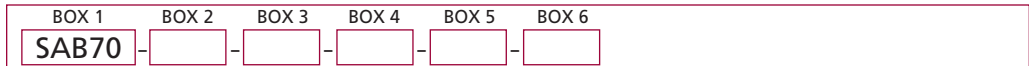
Max. Flow Rate: 700 SCFM / 5300 gpm

Filtration Rating: 2 μ m Excellement® Z-Media™

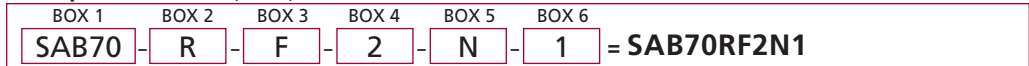
Connection: 8 bolt DN 125 flange

Filter Model Number Selection

How to Build a Valid Model Number for a Schroeder SAB70:



Example: NOTE: One option per box



BOX 1	BOX 2	BOX 3	BOX 4	BOX 5
Model Number	Replacement Element	Connection Type	Filtration Rating	Gauge Option
SAB70	R = Replacement Elements	F = Flanged	2	N = No Gauge W = With Gauge

BOX 6
Connection Size
1 = Standard (DN125)

Replacement Elements: R-SAB70-2

Air Breathers

Air Breathers

Suction Separators and Strainers

Oil Sight Glasses

D-AB Desiccant Filter Breather



The Schroeder desiccant air breathers are designed to increase operational efficiency while reducing operating costs by protecting industrial systems from moisture and particle contaminants.

As fluid levels drop and pressure changes occur in a system, moist air is drawn through the breather (as shown in the diagram below). Air passes through a 2-micron solid contaminant filter and a diffuser to ensure maximum efficiency in the silica gel chamber. Water vapor in the air is absorbed by the silica gel before the dry air passes through a second 2-micron contaminant filter. The filtered air that enters the reservoir is void of moisture and contaminants.

Features

Bi-directional Air Flow

As moist air flows through the breather's filtration system, it is cleaned of impurities and dried. Expelled air partially regenerates the silica gel and "backflushes" the particulate to prolong the life of the breather.

Durable Construction

The desiccant air breathers are manufactured from rugged ABS plastic and impact-modified Plexiglas.

Water Vapor Absorbent

Silica gel is chemically inert, non-toxic, non-deliquescent, non-corrosive and environmentally disposable. Its internal structure of interconnected microscopic pores absorbs up to 40% of its weight. The operating temperature range is -20°F to 200°F (29°C to 93°C).

Color Indicator

As the gold silica gel absorbs water, it turns green to indicate that it has reached its functional capacity and that replacement of the breather is required.

Dual Anti-static Filter System

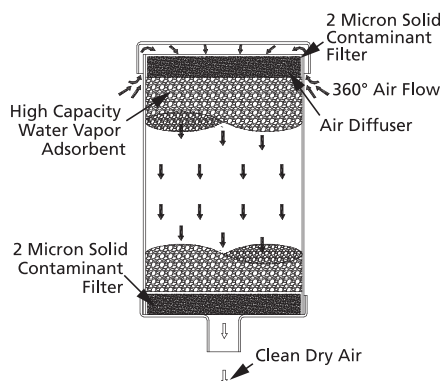
The solid contaminant filters are designed to reduce the potential for explosion in dusty environments.

Safety Sealed

To ensure a long shelf life and premium operating performance, each desiccant breather is individually sealed and vacuum packed to protect it from moisture before it is placed in service. All seals are easily removable without the use of tools or sharp instruments.

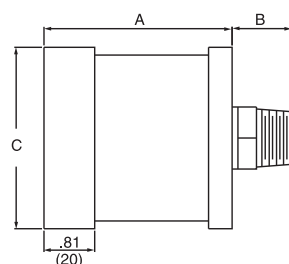
Benefits

- Anti-static features to protect against fire ignition
- High water absorption capacity (up to 18.5 oz)
- Long operating life and low maintenance costs
- Environmentally safe disposable silica gel
- Compatibility with a variety of applications
- Prevents rust and oxidation
- Minimizes component wear and maintenance
- Curtails freezing and additive depletion
- Diminishes fluid degradation and orifice blockage
- Extends oil filter and hydraulic system life



Applications

- New and Retrofit Applications
- Gear Boxes
- Hydraulic Reservoirs
- Storage Tanks



	D-AB-2	D-AB-2-F	D-AB-8			
Model Number	Connection	Normal Capacity	Air Flow/psi Drop	A	B	C
D-AB-2	.75" NPT Male	20 SCFM	2 psi at 20 SCFM	3.16 (80)	0.95 (24)	3.25 (83)
D-AB-2-F	2.25" SAE J829 Flange	20 SCFM	2 psi at 20 SCFM	3.16 (80)	Contact factory	3.25 (83)
D-AB-8	2" NPT Male	100 SCFM	Not available	11.5 (292)	1.75 (44)	5.0 (127)

Specifications

Air Breathers

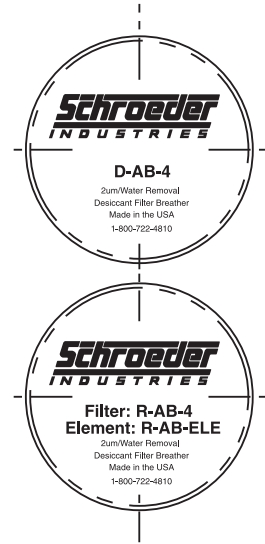
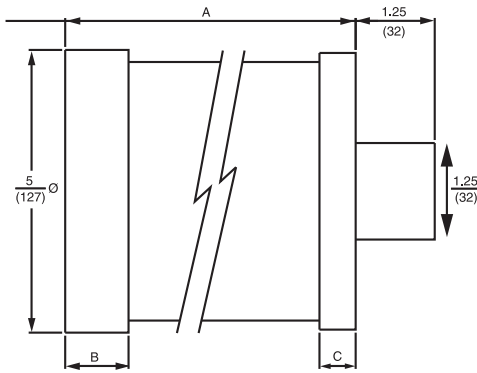


D-AB-4



R-AB-4

D-AB-4 R-AB-4



Specifications

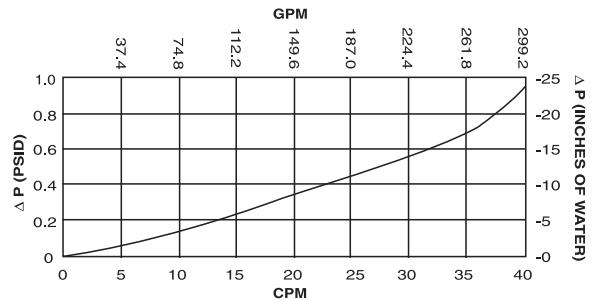
Model Number	Normal Capacity	Air Flow/ psi Drop	A	B	C
D-AB-4	35 SCFM	0.70 psi at 35 SCFM	8 (203)	1.75 (44)	0.75 (19)
R-AB-4	35 SCFM	0.70 psi at 35 SCFM	10 (254)	3.00 (76)	1.50 (38)

The R-AB-4 features inlet and outlet check valves located in the reusable cap (head), which control both the airflow into the reservoir and the airflow out of the reservoir and prolongs the life of the desiccant by allowing the air to flow through the breather only when needed to protect the integrity of the reservoir by establishing the thresholds of vacuum (air in) and pressure (air out). Check valve settings are 0.3 psi in and 2.1 psi out.

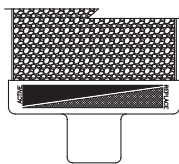
The R-AB-4 also includes a reusable top cap which allows for the economic replacement of the desiccant cartridge.

P/N for replacement cartridge is R-AB-ELE.

Both D-AB-4 and R-AB-4 require an adapter. Purchase separately. See below for Adapter Selection Guide.

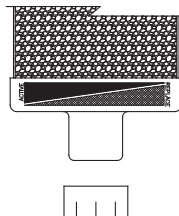


Adapter Selection Guide



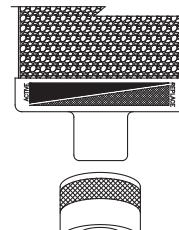
Flange Adapter

Part No. D-AB-FA (without holes)
Part No. D-AB-FA1 (with holes)



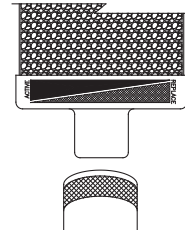
Threaded Adapter

Part No. D-AB-TA1 (1" MNPT)
Part No. D-AB-TA34 (3/4" MNPT)



Bayonet Adapter

Part No. D-AB-BA



Spin On Adapter

Part No. D-AB-SOA1 (1" 12UNF)
Part No. D-AB-SOA112 (1-1/2" 16UNF)



Features and Benefits

- Unique air flow design with suction tube as splash protection and protection against absorbent getting into the tank
- 2 stages of absorbent provide optimal combination of drying efficiency and water retention
- Pleated air filter with 2 μm filtration rating
- Reusable base with protection (intake) and bypass (outflow) valves
- Protection valves prevent absorbents being saturated during system downtime
- Bypass valves divert out flow away from water removal media to preserve its life
- Robust Zinc die-casting connection piece with integrated anti-splash baffles
- Replacement cartridge available in 3 different sizes

Suction Separators and Strainers

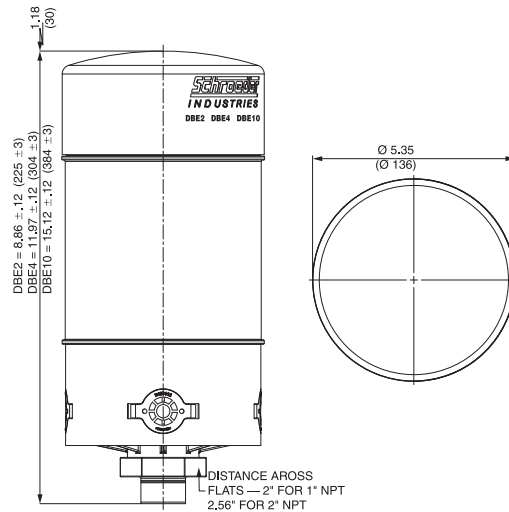
Oil Sight Glasses

Model No. of filter in photograph is DBE-4.

- New and Retrofit Applications
- Gear Boxes
- Hydraulic Reservoirs
- Wind Turbines

Applications

Dimensions



Element Contamination Retention Capacity: (2 μm), 26g

Operating Temperature: -20°F to 210°F (-29°C to 99°C)

Storage Temperature: from -40°F(-40°C)

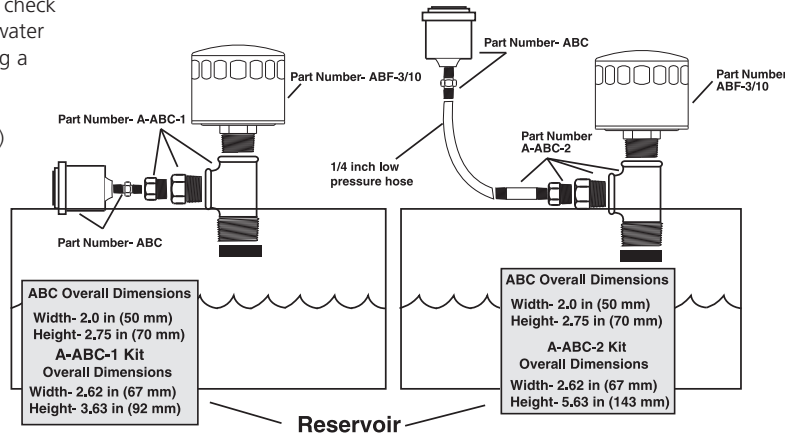
Technical Data

Specifications

Size	Water Retention Capacity (gallon)		Optimal Air Flow Rate (SCFM)	Max. Drying Capacity at Medium Humidity (SCF)	Max. Drying Capacity at High Humidity (SCF)
	Max.	Actual			
DBE-2	.06	.05	21	350	210
DBE-4	.13	.08	28	880	530
DBE-10	.20	.13	35	1450	880

Air Breather Check

The Air Breather Check (ABC) takes the guesswork out of when to change your air breather because it doesn't care how dirty the air breather looks or how long it's been installed. It only cares how well the breather is working. The air breather check is calibrated in inches of water and will activate, providing a visual indication, when a vacuum equivalent of 15 inches of water (3.75 kPa) is reached. The ABC can be reset simply by depressing the yellow button and used over and over again.



Air Breather Check (ABC)
An Indicator For Your Air Breather

Air Breathers

Suction Separators and Strainers

Oil Sight Glasses



Filler Strainer Assemblies

A-TB-779

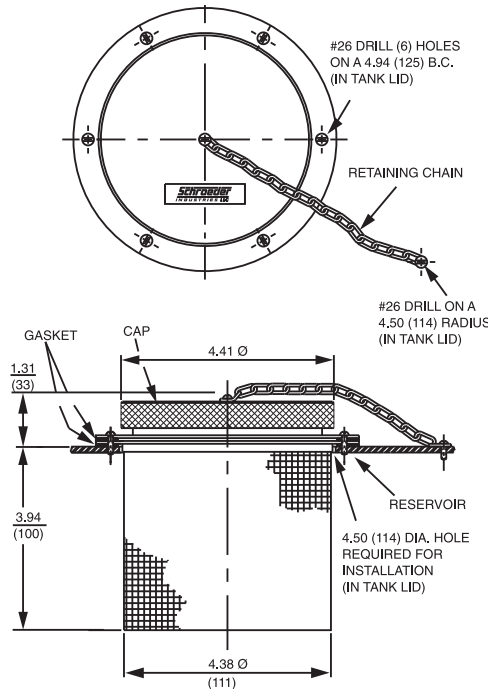
A-TB-780

Speed the process of adding fluid to a reservoir by using our rapid fill cap and strainer. The strainer is 4.38" in diameter and designed to accept cold viscous fluids easily. Choose from two strainer mesh sizes: A-TB-779, which features #24 mesh, and A-TB-780, which is supplied with #70 mesh. The cap completely seals the opening. All assemblies are supplied with necessary hardware, including retaining chain for cap and self tapping screws for installation.

Specifications: A-TB's

Model Number	Mesh Size	Strainer O.D.	Strainer Height	Flange Diameter
A-TB-780	70	4.38	3.94	5.56
A-TB-779	24	(111)	(100)	(141)

Metric dimensions in ().



Rapid Fill Cap and Strainer

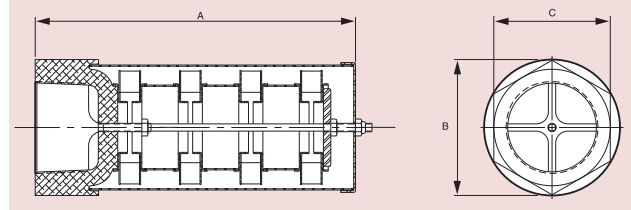


Magnetic Suction Separators



With the use of Schroeder's Magnetic Suction Separators, suction line filtration is provided without starving the pump. They offer unique protection for pumps from all sizes of ferrous particles, some of which have the potential of destroying a pump in a single pass. Large ceramic magnets are spaced along the length of the separator. All hydraulic fluid entering the pump must move at low velocity through a powerful magnetic field. This field traps large quantities of micron ferrous particles. The viscous properties of the fluid can cause some non-ferrous particles to adhere to the magnetically trapped particles.

Schroeder SKB's are available in sizes ranging from one to three inches. The chart below shows the part numbers, specifications, and dimensions of available models.



Complete Model Number	Pipe Size	Flow gpm	Δ psi at Max. gpm	Dimensions		
				A	B	C
SKB-1	1"	15 (55)	0.05	5.25 (133)	3.25 (83)	1.62 (41)
SKB-1.25	1¼"	25 (95)	0.05	8.25 (210)	3.50 (89)	3.00 (76)
SKB-1.5	1½"	35 (135)	0.08	8.25 (210)	3.50 (89)	3.00 (76)
SKB-2	2"	50 (190)	0.10	8.25 (210)	3.50 (89)	3.00 (76)
SKB-3	3"	100 (380)	0.02	10 (254)	4.75 (121)	4.00 (102)

Metric dimensions in ().

The standard outer screen has adequate open area (.079 inch diameter perforations) to eliminate the possibility of pump starvation. All models are also available with a pleated 20 mesh screen (850 micron) by adding SS20 to the model number. (Example SKB-1-SS20.)

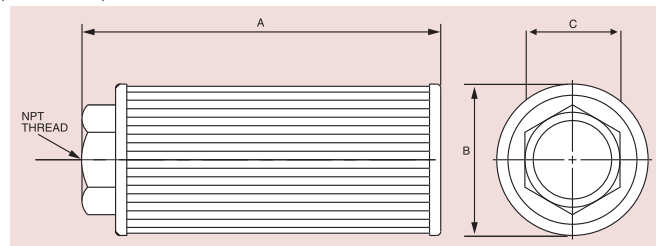
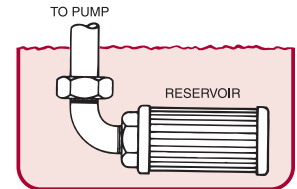
Please note that we also offer in-line filter housings equipped with SKB elements. See In-Line Magnetic Suction Separators and Tank-Mounted Magnetic Suction Separators (pages 287-290) for details.

Suction Strainers



These all metal suction strainers are furnished with optimized pleat size and screen area for extended life and low pressure drop. 100 mesh stainless steel screen (140 micron) has 33.3% open area. Porting head is carbon steel, center core is plated perforated steel. End cap is heavy gauge zinc plated steel. These strainers can handle temperatures up to 250°F (121°C).

60 mesh (238 micron) and 200 mesh (74 micron) models also available – contact factory.



Model Number				Other Information			
Basic Model	Optional 3 psi Bypass	Pipe Size	Flow* gpm (L/min)	Dimensions			Screen Area in ² (cm ²)
				A	B	C	
SS-.5-100	(Omit) = None	½"	5 (19)	3.10 (79)	2.63 (67)	1.12 (28)	62 (400)
SS.75-100		¾"	8 (30)	3.55 (90)	2.63 (67)	1.31 (33)	88 (567)
SS-1-100		1"	10 (38)	5.35 (136)	2.63 (67)	1.62 (41)	110 (710)
SS-1.25-100	-3 = Bypass valve	1¼"	20 (76)	6.85 (174)	3.38 (89)	1.88 (48)	162 (1045)
SS-1.5-100		1½"	30 (114)	8.01 (204)	3.38 (89)	2.12 (54)	225 (1450)
SS-2-100		2"	50 (189)	9.85 (250)	3.94 (100)	2.75 (70)	340 (2200)
SS-2.5-100		2½"	75 (284)	10.10 (257)	5.12 (130)	3.22 (82) Round	400 (2580)
SS-3-100		3"	100 (379)	11.78 (299)	5.12 (130)	4.00 (102) Round	500 (3225)

*Flow rating based on 5 FPS or less.

Metric dimensions in ().

Examples: **SS-2-100** SS suction strainer, 2" NPT, without bypass valve.
SS-1-100-3 SS suction strainer, 1" NPT, with 3 psi bypass valve.

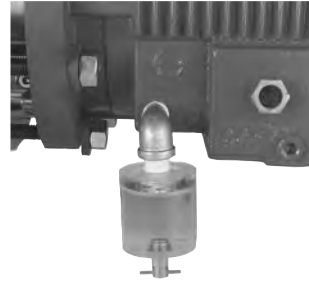
Oil Sight Glasses

Schroeder Oil Sight Glasses provide maintenance and lubrication management professionals a complete and immediate visual oil analysis. Constructed of durable cast acrylic, they withstand most petroleum products to remain crystal clear. Although easy detection and discharge of water contamination are leading benefits, operators can also visually monitor the oil for discoloration or debris. The drain valve is made from brass with a vulcanized rubber seal. Both materials have excellent resistance to hydrocarbon and petroleum-based products, hydraulic fluids, most silicone fluids, and fuels. A detailed chemical resistance chart is available upon request.

Our Oil Sight Glass product line includes models for vertical and horizontal mounting, high temperature applications, large volume bowls, level indication and the all encompassing Oil Sight Glass and Level Monitor. The revolutionary 3-D Oil Sight Glass can replace the problematic, old-fashioned sight plug on your oil reservoir to provide greater visibility.

Benefits

- Withstand most petroleum products to remain crystal clear
- Continuously monitor oil level and condition
- Extremely low maintenance
- Low purchase and installation costs
- Save expensive equipment through early detection and action



For many systems the 1 oz. Oil Sight Glass is adequate. The 3 oz. Oil Sight Glass provides additional volume and should be used when the condensation or water spillover is excessive. Schroeder also offers 16 oz. and 32 oz. Oil Sight Glasses for special applications that require the ability to accumulate substantial volumes of water due to large oil reservoirs, high condensation problems or excessive water spillover. Even larger sizes and unique configurations are available for special applications.

	1 oz. Oil Sight Glass	3 oz. Oil Sight Glass
Outside Diameter:	1.75 (44)	2.50 (64)
Length:	2.38 (60)	2.38 (60)
Maximum psi (bar):	225 (16)	200 (14)
Operating Temperature:	-40°F to 165°F -40°C to 74°C	-40°F to 165°F -40°C to 74°C
Specifications:	Commercial grade acrylic Brass drain valve ¼", ⅜" or ½" NPT brass nipples Vertical and horizontal styles Available in 16 oz and 32 oz sizes Stainless steel hardware available	

Metric dimensions in ().



Air Breathers

Suction
Separators
and
Strainers

Oil Sight
Glasses



VERTICAL

Horizontal Oil Sight Glass

The *Horizontal* Oil Sight Glass is designed to be installed on equipment that has restricted vertical clearance. The design has the mounting nipple and drain valve eccentrically machined and oriented 180° apart. This provides the same ability to discharge any accumulated water.



HORIZONTAL

Part No.	Description	Part No.	Description
OSG1X250	Vertical 1 oz ¼" NPT	OSG1X250HZ	Horizontal 1 oz ¼" NPT
OSG1X375	Vertical 1 oz ⅜" NPT	OSG1X375HZ	Horizontal 1 oz ⅜" NPT
OSG1X500	Vertical 1 oz ½" NPT	OSG1X500HZ	Horizontal 1 oz ½" NPT
OSG3X250	Vertical 3 oz ¼" NPT	OSG3X250HZ	Horizontal 3 oz ¼" NPT
OSG3X375	Vertical 3 oz ⅜" NPT	OSG3X375HZ	Horizontal 3 oz ⅜" NPT
OSG3X500	Vertical 3 oz ½" NPT	OSG3X500HZ	Horizontal 3 oz ½" NPT
OSG16X500	Vertical 16 oz ½" NPT		
OSG32X500	Vertical 32 oz ½" NPT		

How to Order

Oil Sight Glasses

High Temperature Oil Sight Glass



When oil operating temperatures or radiant heat from adjacent equipment are continually in excess of 165°F, you should consider utilizing the Schroeder High Temperature Oil Sight Glass.

	1 oz. Oil Sight Glass	3 oz. Oil Sight Glass
Outside Diameter:	2.75 (70)	3.50 (89)
Length:	2.50 (64)	2.50 (64)
Maximum psi (bar):	225 (16)	225 (16)
Operating Temperature:	450°F 232°C	450°F 232°C
Specifications:	Heavy-walled Pyrex glass Teflon™ end plates Stainless steel nuts and bolts Viton® O-rings Brass drain valve ¼", ⅜" or ½" NPT brass nipples Vertical style only Stainless steel hardware available	

Metric dimensions in ().

How to Order

Part No.	Description
OSG1X250HT	High Temp 1 oz ¼" NPT
OSG1X375HT	High Temp 1 oz ⅜" NPT
OSG1X500HT	High Temp 1 oz ½" NPT
OSG3X250HT	High Temp 3 oz ¼" NPT
OSG3X375HT	High Temp 3 oz ⅜" NPT
OSG3X500HT	High Temp 3 oz ½" NPT

Magnet Option



Any Oil Sight Glass can be equipped with a rare earth magnet that attracts and holds microscopic ferrous particles in your oil. Further analysis of these particles can help determine what component is failing for replacement. The Magnet Drain Valve is easily interchanged with the standard drain valve on any OSG product.

Oil Sight Glasses

When seeing and maintaining the level of oil in your reservoir is critical, the Oil Sight Glass and Level Monitor (OSGL) provides all the benefits of the OSG plus the ability to constantly monitor the level of the reservoir oil. The dual port model has a second 3/8" NPT thread at 180° to allow the installation of a drain valve or access to the oil reservoir utilizing a pilot tube and a pitot sample adapter. This all-in-one product provides continuous monitoring of the clarity, color, sediment, water contamination and level of the oil.

Outside Diameter:	1.75 (44)
Length:	3" (76), 6" (152), 9" (229), 12" (305), 15" (381), 18" (457), 24" (610), or custom available
Maximum psi (bar):	225 (16)
Operating Temperature:	-40°F to 165°F -40°C to 74°C
Specifications:	Commercial grade acrylic Brass drain valve 3/8" NPT brass nipples Available in dual port version with a second 3/8" NPT port Stainless steel hardware available

Metric dimensions in ().

Oil Sight Glass & Level Monitor



Air Breathers

Suction Separators and Strainers

Oil Sight Glasses

Part No.	Description
OSGL3	OSG and Level Monitor 3" (76)
OSGL6	OSG and Level Monitor 6" (152)
OSGL9	OSG and Level Monitor 9" (229)
OSGL12	OSG and Level Monitor 12" (305)
OSGL3DP	OSG and Dual Port Level Monitor 3" (76)
OSGL6DP	OSG and Dual Port Level Monitor 6" (152)
OSGL9DP	OSG and Dual Port Level Monitor 9" (229)
OSGL12DP	OSG and Dual Port Level Monitor 12" (305)
OSGL15	OSG and Level Monitor 15" (381)
OSGL18	OSG and Level Monitor 18" (457)
OSGL24	OSG and Level Monitor 24" (610)
OSGL15DP	OSG and Dual Port Level Monitor 15" (381)
OSGL18DP	OSG and Dual Port Level Monitor 18" (457)
OSGL224DP	OSG and Dual Port Level Monitor 24" (610)

How to Order

Oil Sight Glasses

3-D Oil Sight Glass



The 3-D Oil Sight Glass is machined from one solid piece of impact resistant, high strength, stain-resistant cast acrylic. It has excellent resistance to hydrocarbon and petroleum-based products, hydraulic fluids, most silicone fluids, and fuels. Replaces problematic, old-fashioned oil level sight plugs. Fits virtually every oil reservoir. Revolutionary easy view design is visible from virtually any angle, minimizing false positives.

NPT:	1/2", 3/4", 1", 1 1/4", 1 1/2", 2"
Outside Diameter:	7/8", 1 1/8", 1 3/8", 1 3/4", 2", 2 1/2"
Length:	1", 1 1/2" from last thread. Metric and custom sizes available.
Maximum psi (bar):	300 (21)
Operating Temperature:	200°F (93°C) at 66 psi (5 bar) 230°F (110°C) at atmospheric pressure

Metric dimensions in ().

How to Order

Part No.	Description	Part No.	Description
3DBM10X1.0	Metric 10 x 1.0	3DB0250	1/4" NPT
3DBM10X1.5	Metric 10 x 1.5	3DB0375	3/8" NPT
3DBM12X1.5	Metric 12 x 1.5	3DB0500	1/2" NPT
3DBM16X1.5	Metric 16 x 1.5	3DB0750	3/4" NPT
3DBM20X1.5	Metric 20 x 1.5	3DB1000	1" NPT
3DBM22X1.5	Metric 22 x 1.5	3DB1250	1 1/4" NPT
3DBM24X1.5	Metric 24 x 1.5	3DB1500	1 1/2" NPT
3DBM26X1.5	Metric 26 x 1.5	3DB2000	2" NPT
3DBM27X1.5	Metric 27 x 1.5		
3DBM30X2.0	Metric 30 x 2.0		
3DBM33X1.5	Metric 33 x 1.5		



BEFORE



AFTER

