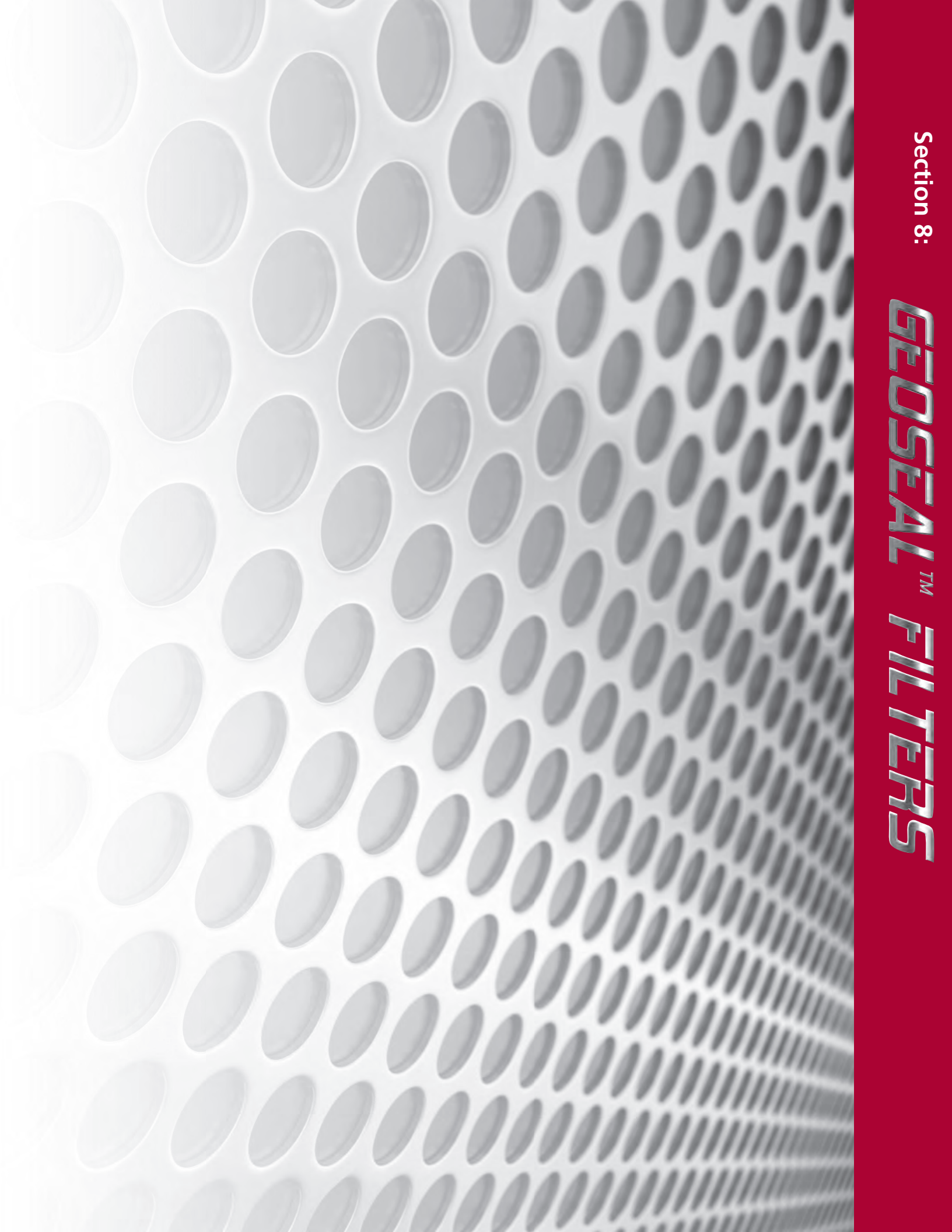


Section 8:

GEOSEAL™ FILTERS



Section 8 GeoSeal™ Filters Selection Guide

| | Pressure psi (bar) | Flow gpm (L/min) | Element Length/Size | Page | |
|-----------------|--|---------------------|------------------------|---------------------|-----|
| GeoSeal Filters | High Pressure GeoSeal Filters | | | | |
| | GKF30 GeoSeal™ | 3000 (210) | 100/150 (380/570) | KG, KKG, 27KG | 299 |
| | GKF50 GeoSeal | 5000 (345) | 100/150 (380/570) | KG, KKG, 27KG | 299 |
| | GKC50 GeoSeal | 5000 (345) | 100/150 (380/570) | KG, KKG, 27KG | 299 |
| | GMKF50 GeoSeal | 5000 (345) | 200 (760) | KG, KKG, 27KG | 300 |
| | GKC65 GeoSeal | 6500 (450) | 100 (380) | KG, KKG, 27KG | 300 |
| | Medium Pressure GeoSeal Filters | | | | |
| | GKF8 GeoSeal | 800 (55) | 100 (380) | KG | 301 |
| | GK9 GeoSeal | 900 (60) | 100 (380) | KG, KKG, 27KG | 301 |
| | G2K9 GeoSeal | 900 (60) | 100 (380) | KG, KKG, 27KG | 302 |
| | G3K9 GeoSeal | 900 (60) | 100 (380) | KG, KKG, 27KG | 302 |
| | Low Pressure GeoSeal Filters | | | | |
| | GKF3 GeoSeal | 300 (20) | 100 (380) | KG, KKG, 27KG | 303 |
| | GKL3 GeoSeal | 300 (20) | 120 (455) | KG, KKG, 27KG, 18LG | 303 |
| | GMLF1 GeoSeal | 300 (20) | 200 (760) | KG | 304 |
| GRT GeoSeal | 100 (7) | 100 (380) | KBG, KKBG, 27KKBG | 304 | |

Schroeder GeoSeal™ Filters

There are currently more than 180 filter element suppliers in business producing cheap imitations of well-established manufacturers like Schroeder. Far too often, customers make purchasing decisions based solely on price, only to be extremely disappointed with the poor quality delivered by low cost imitations. To make the matter worse, the customer often points an accusing finger at the filter housing manufacturer for poor performance, rather than the inadequate element they used as a replacement for the original Schroeder element.

GeoSeal is a new patent pending offering from Schroeder that provides a unique way for OEM's to retain replacement element business and to keep a filter's performance at the level that it was supplied. The idea is brilliantly simple: the critical sealing arrangement between a filter housing and its replacement element takes on a shape other than the standard circular arrangement. Specifically, the element grommet & mating bushing are given a new geometric shape. Figures 1 & 2 show the initial configuration being used.

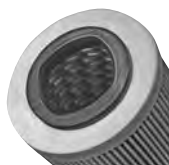


Figure 1. Filter element with GeoSeal grommet.



Figure 2. Filter housing (cut-away) with GeoSeal grommet bushing.

Availability

Currently, the GeoSeal design is available on the K-size element and in the following Schroeder filter series: KF30, KF50, KC50, KC65, MKF50, K9, 2K9, 3K9, KF3, KL3, MLF1, KF8, RT.

How To Order

To order the filter housing and element incorporated with the GeoSeal design:

- "G" is added to the front of the housing model code (KF30, KF50, KC50, KC65, MKF50, KF3, KL3, MLF1, KF8, K9, 2K9, 3K9)
- "BG" is added to the element model code for RT (one end of the element has the GeoSeal; the other end has an integrated bypass valve)
- "G" is added to the element model code for all other housings

High Pressure Filters with GeoSeal™ Elements

Patent Pending

How to Build a Valid Model Number for a Schroeder GKF30:

| | | | | | | | | |
|-------|-------|-------|-------|-------|-------|-------|-------|-------|
| BOX 1 | BOX 2 | BOX 3 | BOX 4 | BOX 5 | BOX 6 | BOX 7 | BOX 8 | BOX 9 |
| GKF30 | - | - | - | - | - | - | - | - |

Example: NOTE: Only boxes 7 and 9 may contain more than one option

| | | | | | | | | |
|-------|-------|----------|-------|-------|-------|-------|--------|-------|
| BOX 1 | BOX 2 | BOX 3 | BOX 4 | BOX 5 | BOX 6 | BOX 7 | BOX 8 | BOX 9 |
| GKF30 | - 1 - | - KGZ5 - | - | - | - S - | - | - D5 - | - |

= GKF301KGZ5SD5

| BOX 1 | BOX 2 | BOX 3 | | | | BOX 4 |
|---------------|--------------------|------------------------------------|-----------|------------|---|-----------------------------|
| Filter Series | Number of Elements | Element Part Number (with GeoSeal) | | | | Seal Material |
| GKF30 | 1 | K Length | KK Length | 27K Length | | Omit = Buna N V = Viton® |
| | 2 | KGZ1 | KKGZ1 | 27KGZ1 | = 1 µ Excellement® Z-Media™ (synthetic) | |
| | 3 | KGZ3 | KKGZ3 | 27KGZ3 | = 3 µ Excellement Z-Media (synthetic) | |
| | | KGZ5 | KKGZ5 | 27KGZ5 | = 5 µ Excellement Z-Media (synthetic) | |
| | | KGZ10 | KKGZ10 | 27KGZ10 | = 10 µ Excellement Z-Media (synthetic) | |
| | | KGZ25 | KKGZ25 | 27KGZ25 | = 25 µ Excellement Z-Media (synthetic) | |
| | | KGW | KKGW | 27KGW | = W media (water removal) | |

Refer to KF30 catalog page 92 for options for Boxes 5 through 9.

Please note: No-Element Indicator, X Blocked Bypass and Magnetic Inserts *not offered*.

Filter Model Number Selection

GKF30

GKF30

GKF50

GKC50

GMKF50

GKC65

GKF8

GK9

G2K9

G3K9

GKF3

GKL3

GMLF1

GRT

GKF50

How to Build a Valid Model Number for a Schroeder GKF50:

| | | | | | | | | |
|-------|-------|-------|-------|-------|-------|-------|-------|-------|
| BOX 1 | BOX 2 | BOX 3 | BOX 4 | BOX 5 | BOX 6 | BOX 7 | BOX 8 | BOX 9 |
| GKF50 | - | - | - | - | - | - | - | - |

Example: NOTE: Only boxes 7 and 9 may contain more than one option

| | | | | | | | | |
|-------|-------|----------|-------|-------|-------|-------|--------|-------|
| BOX 1 | BOX 2 | BOX 3 | BOX 4 | BOX 5 | BOX 6 | BOX 7 | BOX 8 | BOX 9 |
| GKF50 | - 1 - | - KGZ5 - | - | - | - S - | - | - D5 - | - |

= GKF501KGZ5SD5

| BOX 1 | BOX 2 | BOX 3 | | | | BOX 4 |
|---------------|--------------------|------------------------------------|-----------|------------|--|----------------------------|
| Filter Series | Number of Elements | Element Part Number (with GeoSeal) | | | | Seal Material |
| GKF50 | 1 | K Length | KK Length | 27K Length | | Omit = Buna N V = Viton |
| | 2 | KGZ1 | KKGZ1 | 27KGZ1 | = 1 µ Excellement Z-Media (synthetic) | |
| | 3 | KGZ3 | KKGZ3 | 27KGZ3 | = 3 µ Excellement Z-Media (synthetic) | |
| | | KGZ5 | KKGZ5 | 27KGZ5 | = 5 µ Excellement Z-Media (synthetic) | |
| | | KGZ10 | KKGZ10 | 27KGZ10 | = 10 µ Excellement Z-Media (synthetic) | |
| | | KGZ25 | KKGZ25 | 27KGZ25 | = 25 µ Excellement Z-Media (synthetic) | |
| | | KGW | KKGW | 27KGW | = W media (water removal) | |

Refer to KF50 catalog page 100 for options for Boxes 5 through 9.

Please note: No-Element Indicator, X Blocked Bypass and Magnetic Inserts *not offered*.

NOTES:

Box 2. Number of elements must equal 1 when using KK or 27K elements.

Box 3. Replacement element part numbers are identical to contents of Boxes 3 and 4 combined. Double and triple stacking of K-size elements can be replaced by single KK and 27K elements, respectively.

How to Build a Valid Model Number for a Schroeder GKC50:

| | | | | | | | | |
|-------|-------|-------|-------|-------|-------|-------|-------|-------|
| BOX 1 | BOX 2 | BOX 3 | BOX 4 | BOX 5 | BOX 6 | BOX 7 | BOX 8 | BOX 9 |
| GKC50 | - | - | - | - | - | - | - | - |

Example: NOTE: Only boxes 7 and 9 may contain more than one option

| | | | | | | | | |
|-------|-------|----------|-------|-------|-------|-------|--------|-------|
| BOX 1 | BOX 2 | BOX 3 | BOX 4 | BOX 5 | BOX 6 | BOX 7 | BOX 8 | BOX 9 |
| GKC50 | - 1 - | - KGZ5 - | - | - | - S - | - | - D5 - | - |

= GKC501KGZ5SD5

| BOX 1 | BOX 2 | BOX 3 | | | | BOX 4 |
|---------------|--------------------|------------------------------------|-----------|------------|--|----------------------------|
| Filter Series | Number of Elements | Element Part Number (with GeoSeal) | | | | Seal Material |
| GKC50 | 1 | K Length | KK Length | 27K Length | | Omit = Buna N V = Viton |
| | 2 | KGZ1 | KKGZ1 | 27KGZ1 | = 1 µ Excellement Z-Media (synthetic) | |
| | 3 | KGZ3 | KKGZ3 | 27KGZ3 | = 3 µ Excellement Z-Media (synthetic) | |
| | | KGZ5 | KKGZ5 | 27KGZ5 | = 5 µ Excellement Z-Media (synthetic) | |
| | | KGZ10 | KKGZ10 | 27KGZ10 | = 10 µ Excellement Z-Media (synthetic) | |
| | | KGZ25 | KKGZ25 | 27KGZ25 | = 25 µ Excellement Z-Media (synthetic) | |
| | | KGW | KKGW | 27KGW | = W media (water removal) | |

Refer to KC50 catalog page 104 for options for Boxes 5 through 9.

Please note: No-Element Indicator, X Blocked Bypass and Magnetic Inserts *not offered*.

GKC50

NOTES:

Box 2. Number of elements must equal 1 when using KK or 27K elements.

Box 3. Replacement element part numbers are identical to contents of Boxes 3 and 4 combined. Double and triple stacking of K-size elements can be replaced by single KK and 27K elements, respectively.

High Pressure Filters with GeoSeal™ Elements

Patent Pending

GMKF50

How to Build a Valid Model Number for a Schroeder GMKF50:

BOX 1 BOX 2 BOX 3 BOX 4 BOX 5 BOX 6 BOX 7 BOX 8
 GMKF50 - [] - [] - [] - [] - [] - [] - []

Example: NOTE: Only box 6 may contain more than one option

BOX 1 BOX 2 BOX 3 BOX 4 BOX 5 BOX 6 BOX 7 BOX 8
 GMKF50 - 2 - KGZ5 - [] - P - [] - D5 - [] = GMKF502KGZ5PD5

| BOX 1 | BOX 2 | BOX 3 | | | |
|---------------|--------------------|------------------------------------|-----------|------------|---|
| Filter Series | Number of Elements | Element Part Number (with GeoSeal) | | | |
| GMKF50 | 2 4 6 | K Length | KK Length | 27K Length | |
| | | KGZ1 | KKGZ1 | 27KGZ1 | = 1 µ Excellement® Z-Media™ (synthetic) |
| | | KGZ3 | KKGZ3 | 27KGZ3 | = 3 µ Excellement Z-Media (synthetic) |
| | | KGZ5 | KKGZ5 | 27KGZ5 | = 5 µ Excellement Z-Media (synthetic) |
| | | KGZ10 | KKGZ10 | 27KGZ10 | = 10 µ Excellement Z-Media (synthetic) |
| | | KGZ25 | KKGZ25 | 27KGZ25 | = 25 µ Excellement Z-Media (synthetic) |
| | | KGW | KKGW | 27KGW | = W media (water removal) |

BOX 4

| Seal Material |
|-----------------------------|
| Omit = Buna N V = Viton® |

NOTES:

- Box 2. Number of elements must equal 1 when using KK or 27K elements.
- Box 3. Replacement element part numbers are identical to contents of Boxes 3 and 4 combined. Double and triple stacking of K-size elements can be replaced by single KK and 27K elements, respectively.

Refer to MKF50 catalog page 108 for options for Boxes 5 through 8.
Please note: No-Element Indicator, X Blocked Bypass and Magnetic Inserts *not offered*.

Filter Model Number Selection

GKC65

How to Build a Valid Model Number for a Schroeder GKC65:

BOX 1 BOX 2 BOX 3 BOX 4 BOX 5 BOX 6 BOX 7 BOX 8 BOX 9
 GKC65 - [] - [] - [] - [] - [] - [] - [] - []

Example: NOTE: Only boxes 7 and 9 may contain more than one option

BOX 1 BOX 2 BOX 3 BOX 4 BOX 5 BOX 6 BOX 7 BOX 8 BOX 9
 GKC65 - 1 - KGZ5 - [] - [] - F - [] - D9 - [] = GKC651KGZ5FD9

| BOX 1 | BOX 2 | BOX 3 | | | |
|---------------|--------------------|------------------------------------|-----------|------------|--|
| Filter Series | Number of Elements | Element Part Number (with GeoSeal) | | | |
| GKC65 | 1 2 3 | K Length | KK Length | 27K Length | |
| | | KGZ1 | KKGZ1 | 27KGZ1 | = 1 µ Excellement Z-Media (synthetic) |
| | | KGZ3 | KKGZ3 | 27KGZ3 | = 3 µ Excellement Z-Media (synthetic) |
| | | KGZ5 | KKGZ5 | 27KGZ5 | = 5 µ Excellement Z-Media (synthetic) |
| | | KGZ10 | KKGZ10 | 27KGZ10 | = 10 µ Excellement Z-Media (synthetic) |
| | | KGZ25 | KKGZ25 | 27KGZ25 | = 25 µ Excellement Z-Media (synthetic) |
| | | KGW | KKGW | 27KGW | = W media (water removal) |

BOX 4

| Seal Material |
|----------------------------|
| Omit = Buna N V = Viton |

NOTES:

- Box 2. Number of elements must equal 1 when using KK or 27K elements.
- Box 3. Replacement element part numbers are identical to contents of Boxes 3 and 4 combined. Double and triple stacking of K-size elements can be replaced by single KK and 27K elements, respectively.

Refer to KC65 catalog page 112 for options for Boxes 5 through 9.
Please note: No-Element Indicator, X Blocked Bypass and Magnetic Inserts *not offered*.

Medium Pressure Filters with GeoSeal™ Elements

Patent Pending

How to Build a Valid Model Number for a Schroeder GKF8:

| | | | | | | | | |
|-------|-------|-------|-------|-------|-------|-------|-------|-------|
| BOX 1 | BOX 2 | BOX 3 | BOX 4 | BOX 5 | BOX 6 | BOX 7 | BOX 8 | BOX 9 |
| GKF8 | - | - | - | - | - | - | - | - |

Example: NOTE: One option per box

| | | | | | | | | |
|-------|-------|-------|-------|-------|-------|-------|-------|-------|
| BOX 1 | BOX 2 | BOX 3 | BOX 4 | BOX 5 | BOX 6 | BOX 7 | BOX 8 | BOX 9 |
| GKF8 | - | 1 | - | KGZ10 | - | S24 | - | D5 |

= GKF81KGZ10S24D5

| BOX 1 | BOX 2 | BOX 3 | BOX 4 | | | | | | | | | | | | | | | | |
|----------------------|---|--|----------------------|--|------|---|------|---------------------------------------|------|---------------------------------------|-------|--|-------|--|-----|---------------------------|--|---------------|------------|
| Filter Series | Number of Elements | Element Part Number (with GeoSeal) | Seal Material | | | | | | | | | | | | | | | | |
| GKF8 | 1 | <table border="1"> <tr><td>K Length</td><td></td></tr> <tr><td>KGZ1</td><td>= 1 μ Excellement® Z-Media™ (synthetic)</td></tr> <tr><td>KGZ3</td><td>= 3 μ Excellement Z-Media (synthetic)</td></tr> <tr><td>KGZ5</td><td>= 5 μ Excellement Z-Media (synthetic)</td></tr> <tr><td>KGZ10</td><td>= 10 μ Excellement Z-Media (synthetic)</td></tr> <tr><td>KGZ25</td><td>= 25 μ Excellement Z-Media (synthetic)</td></tr> <tr><td>KGW</td><td>= W media (water removal)</td></tr> </table> | K Length | | KGZ1 | = 1 μ Excellement® Z-Media™ (synthetic) | KGZ3 | = 3 μ Excellement Z-Media (synthetic) | KGZ5 | = 5 μ Excellement Z-Media (synthetic) | KGZ10 | = 10 μ Excellement Z-Media (synthetic) | KGZ25 | = 25 μ Excellement Z-Media (synthetic) | KGW | = W media (water removal) | <table border="1"> <tr><td>Omit = Buna N</td></tr> <tr><td>V = Viton®</td></tr> </table> | Omit = Buna N | V = Viton® |
| K Length | | | | | | | | | | | | | | | | | | | |
| KGZ1 | = 1 μ Excellement® Z-Media™ (synthetic) | | | | | | | | | | | | | | | | | | |
| KGZ3 | = 3 μ Excellement Z-Media (synthetic) | | | | | | | | | | | | | | | | | | |
| KGZ5 | = 5 μ Excellement Z-Media (synthetic) | | | | | | | | | | | | | | | | | | |
| KGZ10 | = 10 μ Excellement Z-Media (synthetic) | | | | | | | | | | | | | | | | | | |
| KGZ25 | = 25 μ Excellement Z-Media (synthetic) | | | | | | | | | | | | | | | | | | |
| KGW | = W media (water removal) | | | | | | | | | | | | | | | | | | |
| Omit = Buna N | | | | | | | | | | | | | | | | | | | |
| V = Viton® | | | | | | | | | | | | | | | | | | | |

Refer to K8 catalog page 148 for options for Boxes 5 through 9.

Filter Model Number Selection

GKF8

GKF30

GKF50

GKC50

GMKF50

GKC65

GKF8

GK9

G2K9

G3K9

GKF3

GKL3

GMLF1

GRT

NOTES:

Box 3. Replacement element part numbers are identical to contents of Boxes 3 and 4 combined.

How to Build a Valid Model Number for a Schroeder GK9:

| | | | | | | |
|-------|-------|-------|-------|-------|-------|-------|
| BOX 1 | BOX 2 | BOX 3 | BOX 4 | BOX 5 | BOX 6 | BOX 7 |
| GK9 | - | - | - | - | - | - |

Example: NOTE: Only box 6 may contain more than one option

| | | | | | | |
|-------|-------|-------|-------|-------|-------|-------------|
| BOX 1 | BOX 2 | BOX 3 | BOX 4 | BOX 5 | BOX 6 | BOX 7 |
| GK9 | - | 1 | - | KGZ3 | - | S20 N S20 N |

= GK91KGZ3S20NS20ND5

| BOX 1 | BOX 2 | BOX 3 | BOX 4 | | | | | | | | | | | | | | | | | | | | | | | | | | | | |
|----------------------|---------------------------|---|--|-----------|------------|--|------|-------|--------|---------------------------------------|------|-------|--------|---------------------------------------|------|-------|--------|---------------------------------------|-------|--------|---------|--|-------|--------|---------|--|-----|------|-------|---------------------------|--|
| Filter Series | Number of Elements | Element Part Number (with GeoSeal) | | | | | | | | | | | | | | | | | | | | | | | | | | | | | |
| GK9 | 1 2 3 | <table border="1"> <tr><td>K Length</td><td>KK Length</td><td>27K Length</td><td></td></tr> <tr><td>KGZ1</td><td>KKGZ1</td><td>27KGZ1</td><td>= 1 μ Excellement Z-Media (synthetic)</td></tr> <tr><td>KGZ3</td><td>KKGZ3</td><td>27KGZ3</td><td>= 3 μ Excellement Z-Media (synthetic)</td></tr> <tr><td>KGZ5</td><td>KKGZ5</td><td>27KGZ5</td><td>= 5 μ Excellement Z-Media (synthetic)</td></tr> <tr><td>KGZ10</td><td>KKGZ10</td><td>27KGZ10</td><td>= 10 μ Excellement Z-Media (synthetic)</td></tr> <tr><td>KGZ25</td><td>KKGZ25</td><td>27KGZ25</td><td>= 25 μ Excellement Z-Media (synthetic)</td></tr> <tr><td>KGW</td><td>KKGW</td><td>27KGW</td><td>= W media (water removal)</td></tr> </table> | K Length | KK Length | 27K Length | | KGZ1 | KKGZ1 | 27KGZ1 | = 1 μ Excellement Z-Media (synthetic) | KGZ3 | KKGZ3 | 27KGZ3 | = 3 μ Excellement Z-Media (synthetic) | KGZ5 | KKGZ5 | 27KGZ5 | = 5 μ Excellement Z-Media (synthetic) | KGZ10 | KKGZ10 | 27KGZ10 | = 10 μ Excellement Z-Media (synthetic) | KGZ25 | KKGZ25 | 27KGZ25 | = 25 μ Excellement Z-Media (synthetic) | KGW | KKGW | 27KGW | = W media (water removal) | |
| K Length | KK Length | 27K Length | | | | | | | | | | | | | | | | | | | | | | | | | | | | | |
| KGZ1 | KKGZ1 | 27KGZ1 | = 1 μ Excellement Z-Media (synthetic) | | | | | | | | | | | | | | | | | | | | | | | | | | | | |
| KGZ3 | KKGZ3 | 27KGZ3 | = 3 μ Excellement Z-Media (synthetic) | | | | | | | | | | | | | | | | | | | | | | | | | | | | |
| KGZ5 | KKGZ5 | 27KGZ5 | = 5 μ Excellement Z-Media (synthetic) | | | | | | | | | | | | | | | | | | | | | | | | | | | | |
| KGZ10 | KKGZ10 | 27KGZ10 | = 10 μ Excellement Z-Media (synthetic) | | | | | | | | | | | | | | | | | | | | | | | | | | | | |
| KGZ25 | KKGZ25 | 27KGZ25 | = 25 μ Excellement Z-Media (synthetic) | | | | | | | | | | | | | | | | | | | | | | | | | | | | |
| KGW | KKGW | 27KGW | = W media (water removal) | | | | | | | | | | | | | | | | | | | | | | | | | | | | |

| BOX 4 |
|----------------------|
| Seal Material |
| Omit = Buna N |
| V = Viton |

Refer to K9 catalog page 156 for options for Boxes 5 through 7.
Please note: X Blocked Bypass **not offered**.

GK9

NOTES:

Box 2. Double and triple stacking of K-size elements can be replaced by single KK and 27K elements, respectively. Number of elements must equal 2 when using KK or 27K elements.

Box 3. Replacement element part numbers are identical to contents of Boxes 3 and 4 combined.

Medium Pressure Filters with GeoSeal™ Elements

Patent Pending

Filter Model Number Selection

G2K9

How to Build a Valid Model Number for a Schroeder G2K9:

| | | | | | | | | | |
|-------|-------|-------|-------|-------|-------|-------|-------|-------|--------|
| BOX 1 | BOX 2 | BOX 3 | BOX 4 | BOX 5 | BOX 6 | BOX 7 | BOX 8 | BOX 9 | BOX 10 |
| G2K9 | | | | | | | | | |

Example: NOTE: One option per box

| | | | | | | | | | |
|-------|-------|-------|-------|-------|-------|-------|-------|-------|--------|
| BOX 1 | BOX 2 | BOX 3 | BOX 4 | BOX 5 | BOX 6 | BOX 7 | BOX 8 | BOX 9 | BOX 10 |
| G2K9 | 1 | 09 | B | B | V | P16 | P16 | D5 | |

= G2K9109BBVP16P16D5

| BOX 1 | BOX 2 | BOX 3 | BOX 4 |
|----------------------|---------------------------|--|--|
| Filter Series | Number of Elements | Length of Elements | First Housing (with GeoSeal) |
| G2K9 | 1 2 3 | 09 = K size element 18 = KK size element 27 = 27K size element | A = 1 μ Excellement® Z-Media™ (synthetic) B = 3 μ Excellement Z-Media (synthetic) C = 5 μ Excellement Z-Media (synthetic) D = 10 μ Excellement Z-Media (synthetic) E = 25 μ Excellement Z-Media (synthetic) F = W media (water removal) |

| BOX 5 | BOX 6 |
|--|-----------------------------|
| Second Housing | Seal Material |
| A = 1 μ Excellement Z-Media (synthetic) B = 3 μ Excellement Z-Media (synthetic) C = 5 μ Excellement Z-Media (synthetic) D = 10 μ Excellement Z-Media (synthetic) E = 25 μ Excellement Z-Media (synthetic) F = W media (water removal) | Omit = Buna N V = Viton® |

Refer to 2K9 catalog page 160 for options for Boxes 7 through 10.

NOTES:

Box 2. Number of elements must equal 1 when using KK or 27K elements. For replacement element part numbers, please see page 301 in this catalog section. Double and triple stacking of K-size elements can be replaced by single KK and 27K respectively.

G3K9

How to Build a Valid Model Number for a Schroeder G3K9:

| | | | | | | | | | | |
|-------|-------|-------|-------|-------|-------|-------|-------|-------|--------|--------|
| BOX 1 | BOX 2 | BOX 3 | BOX 4 | BOX 5 | BOX 6 | BOX 7 | BOX 8 | BOX 9 | BOX 10 | BOX 11 |
| G3K9 | | | | | | | | | | |

Example: NOTE: One option per box

| | | | | | | | | | | |
|-------|-------|-------|-------|-------|-------|-------|-------|-------|--------|--------|
| BOX 1 | BOX 2 | BOX 3 | BOX 4 | BOX 5 | BOX 6 | BOX 7 | BOX 8 | BOX 9 | BOX 10 | BOX 11 |
| G3K9 | 1 | 09 | E | C | A | B | P16 | P16 | D5 | |

= G3K9109ECABP16P16D5

| BOX 1 | BOX 2 | BOX 3 | BOX 4 |
|----------------------|---------------------------|--|--|
| Filter Series | Number of Elements | Length of Elements | First Housing (with GeoSeal) |
| G3K9 | 1 2 3 | 09 = K size element 18 = KK size element 27 = 27K size element | A = 1 μ Excellement Z-Media (synthetic) B = 3 μ Excellement Z-Media (synthetic) C = 5 μ Excellement Z-Media (synthetic) D = 10 μ Excellement Z-Media (synthetic) E = 25 μ Excellement Z-Media (synthetic) F = W media (water removal) |

| BOX 5 | BOX 6 | BOX 7 |
|--|--|----------------------------|
| Second Housing | Third Housing | Seal Material |
| A = 1 μ Excellement Z-Media (synthetic) B = 3 μ Excellement Z-Media (synthetic) C = 5 μ Excellement Z-Media (synthetic) D = 10 μ Excellement Z-Media (synthetic) E = 25 μ Excellement Z-Media (synthetic) F = W media (water removal) | A = 1 μ Excellement Z-Media (synthetic) B = 3 μ Excellement Z-Media (synthetic) C = 5 μ Excellement Z-Media (synthetic) D = 10 μ Excellement Z-Media (synthetic) E = 25 μ Excellement Z-Media (synthetic) F = W media (water removal) | Omit = Buna N V = Viton |

Refer to 3K9 catalog page 164 for options for Boxes 8 through 11.

NOTES:

Box 2. Number of elements must equal 1 when using KK or 27K elements. For replacement element part numbers, please see page 301 in this catalog section. Double and triple stacking of K-size elements can be replaced by single KK and 27K respectively.

Low Pressure Filters with GeoSeal™ Elements

Patent Pending

How to Build a Valid Model Number for a Schroeder GKF3:

| | | | | | | | | |
|-------|-------|-------|-------|-------|-------|-------|-------|-------|
| BOX 1 | BOX 2 | BOX 3 | BOX 4 | BOX 5 | BOX 6 | BOX 7 | BOX 8 | BOX 9 |
| GKF3 | - | - | - | - | - | - | - | - |

Example: NOTE: Only boxes 7 and 9 may contain more than one option

| | | | | | | | | |
|-------|-------|---------|-------|-------|-------|-------|-------|-------|
| BOX 1 | BOX 2 | BOX 3 | BOX 4 | BOX 5 | BOX 6 | BOX 7 | BOX 8 | BOX 9 |
| GKF3 | - 1 | - KGZ10 | - | - | - S | - | - D5 | - |

= GKF31KGZ10SD5

| BOX 1 | BOX 2 | BOX 3 | | | |
|---------------|--------------------|------------------------------------|-----------|------------|---|
| Filter Series | Number of Elements | Element Part Number (with GeoSeal) | | | |
| GKF3 | 1 | K Length | KK Length | 27K Length | |
| | 2 | KGZ1 | KKGZ1 | 27KGZ1 | = 1 µ Excellement® Z-Media™ (synthetic) |
| | 3 | KGZ3 | KKGZ3 | 27KGZ3 | = 3 µ Excellement Z-Media (synthetic) |
| | | KGZ5 | KKGZ5 | 27KGZ5 | = 5 µ Excellement Z-Media (synthetic) |
| | | KGZ10 | KKGZ10 | 27KGZ10 | = 10 µ Excellement Z-Media (synthetic) |
| | | KGZ25 | KKGZ25 | 27KGZ25 | = 25 µ Excellement Z-Media (synthetic) |
| | | KGW | KKGW | 27KGW | = W media (water removal) |

| BOX 4 |
|-----------------------------|
| Seal Material |
| Omit = Buna N V = Viton® |

Refer to KF3 catalog page 202 for options for Boxes 5 through 9.
Please note: No-Element Indicator and Magnetic Inserts *not offered*.

Filter Model Number Selection

GKF3

GKF30

GKF50

GKC50

GMKF50

GKC65

GKF8

GK9

G2K9

G3K9

GKF3

GKL3

NOTES:

Box 2. Double and triple stacking of K-size elements can be replaced by single KK and 27K respectively. Number of elements must equal 1 when using KK or 27K elements.

Box 3. Replacement element part numbers are identical to contents of Boxes 3 and 4 combined.

GMLF1

GRT

How to Build a Valid Model Number for a Schroeder GKL3:

| | | | | | | | |
|-------|-------|-------|-------|-------|-------|-------|-------|
| BOX 1 | BOX 2 | BOX 3 | BOX 4 | BOX 5 | BOX 6 | BOX 7 | BOX 8 |
| GKL3 | - | - | - | - | - | - | - |

Example: NOTE: One option per box

| | | | | | | | |
|-------|-------|---------|-------|-------|-------|-------|-------|
| BOX 1 | BOX 2 | BOX 3 | BOX 4 | BOX 5 | BOX 6 | BOX 7 | BOX 8 |
| GKL3 | - 2 | - KGZ10 | - | - P24 | - D5 | - L | - |

= GKL32KGZ10P24D5L

| BOX 1 | BOX 2 | BOX 3 | | | |
|---------------|--------------------|------------------------------------|-----------|------------|--|
| Filter Series | Number of Elements | Element Part Number (with GeoSeal) | | | |
| GKL3 | 1 | K Length | KK Length | 27K Length | |
| | 2 | KGZ1 | KKGZ1 | 27KGZ1 | = 1 µ Excellement Z-Media (synthetic) |
| | 3 | KGZ3 | KKGZ3 | 27KGZ3 | = 3 µ Excellement Z-Media (synthetic) |
| | | KGZ5 | KKGZ5 | 27KGZ5 | = 5 µ Excellement Z-Media (synthetic) |
| | | KGZ10 | KKGZ10 | 27KGZ10 | = 10 µ Excellement Z-Media (synthetic) |
| | | KGZ25 | KKGZ25 | 27KGZ25 | = 25 µ Excellement Z-Media (synthetic) |
| | | KGW | KKGW | 27KGW | = W media (water removal) |

| BOX 4 |
|----------------------------|
| Seal Material |
| Omit = Buna N V = Viton |

Refer to KL3 catalog page 206 for options for Boxes 5 through 8.

GKL3

NOTES:

Box 2. Number of elements must equal 1 when using KK or 27K elements. Replacement element part numbers are identical to contents of Boxes 3 and 4 combined. Double and triple stacking of K-size elements can be replaced by single KK and 27K elements, respectively.

Low Pressure Filters with GeoSeal™ Elements

Patent Pending

GMLF1

How to Build a Valid Model Number for a Schroeder GMLF1:

BOX 1 BOX 2 BOX 3 BOX 4 BOX 5 BOX 6 BOX 7 BOX 8 BOX 9
 GMLF1 - [] - [] - [] - [] - [] - [] - [] - []

Example: NOTE: Only box 9 may contain more than one option

BOX 1 BOX 2 BOX 3 BOX 4 BOX 5 BOX 6 BOX 7 BOX 8 BOX 9
 GMLF1 - 2 - KGZ10 - [] - [] - P - [] - D5 - [] = GMLF12KGZ10PD5

| BOX 1 | BOX 2 | BOX 3 | | | |
|---------------|--------------------|------------------------------------|-----------|------------|---|
| Filter Series | Number of Elements | Element Part Number (with GeoSeal) | | | |
| GMLF1 | 2 4 6 | K Length | KK Length | 27K Length | |
| | | KGZ1 | KKGZ1 | 27KGZ1 | = 1 µ Excellement® Z-Media™ (synthetic) |
| | | KGZ3 | KKGZ3 | 27KGZ3 | = 3 µ Excellement Z-Media (synthetic) |
| | | KGZ5 | KKGZ5 | 27KGZ5 | = 5 µ Excellement Z-Media (synthetic) |
| | | KGZ10 | KKGZ10 | 27KGZ10 | = 10 µ Excellement Z-Media (synthetic) |
| | | KGZ25 | KKGZ25 | 27KGZ25 | = 25 µ Excellement Z-Media (synthetic) |
| | | KGW | KKGW | 27KGW | = W media (water removal) |

BOX 4

| Seal Material |
|---------------|
| Omit = Buna N |
| V = Viton® |

NOTES:

- Box 2. Double and triple stacking of K-size elements can be replaced by single KK and 27K elements, respectively. Number of elements must equal 2 when using KK or 27K elements.
- Box 3. Replacement element part numbers are identical to contents of Boxes 3 and 4 combined.

Refer to MLF catalog page 214 for options for Boxes 5 through 9.

GRT

How to Build a Valid Model Number for a Schroeder GRT:

BOX 1 BOX 2 BOX 3 BOX 4 BOX 5 BOX 6 BOX 7 BOX 8
 GRT - [] - [] - [] - [] - [] - [] - []

Example: NOTE: Only box 8 may contain more than one option

BOX 1 BOX 2 BOX 3 BOX 4 BOX 5 BOX 6 BOX 7 BOX 8
 GRT - 1 - KBGZ10 - [] - S24 S24 N - [] - Y2 - [] = GRT1KBGZ10S24S24NY2

| BOX 1 | BOX 2 | BOX 3 | | | |
|---------------|--------------------|------------------------------------|-----------|------------|--|
| Filter Series | Number of Elements | Element Part Number (with GeoSeal) | | | |
| GRT | 1 | K Length | KK Length | 27K Length | |
| | | KBGZ1 | KKBGZ1 | 27KBGZ1 | = 1 µ Excellement Z-Media (synthetic) |
| | | KBGZ3 | KKBGZ3 | 27KBGZ3 | = 3 µ Excellement Z-Media (synthetic) |
| | | KBGZ5 | KKBGZ5 | 27KBGZ5 | = 5 µ Excellement Z-Media (synthetic) |
| | | KBGZ10 | KKBGZ10 | 27KBGZ10 | = 10 µ Excellement Z-Media (synthetic) |
| | | KBGZ25 | KKBGZ25 | 27KBGZ25 | = 25 µ Excellement Z-Media (synthetic) |
| | | KBGW | KKBGW | 27KBGW | = W media (water removal) |

BOX 4

| Seal Material |
|---------------|
| Omit = Buna N |
| V = Viton |

NOTES:

- Box 2. Number of elements must equal 1 when using KK or 27K elements.
- Box 3. Replacement element part numbers are identical to contents Boxes 3 and 4 combined.

Refer to RT catalog page 238 for options for Boxes 5 through 8.