

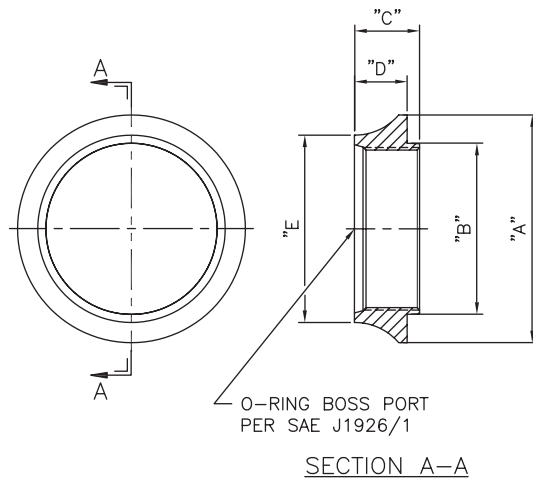
Description

Available immediately, Schroeder introduces a line of reservoir weld flanges. These flanges have SAE female o-ring port threads and are intended to be welded into a reservoir.

Advantages

- Fewer leaks
- Faster assembly time
- Cleaner installation
- Reduced contamination (no pipe dope or Teflon tape being introduced into the system)
- Reduced cavitation of pumps / aeration of oil when used on suction lines

Drawing



Specifications

Flange material: Forged steel
 Flange finish: Black phosphate (suitable for welding)
 Port sizes: See below for the listing of available port sizes

Part Number	SAE Size	Port Thread Size	Dimensions (In)				
WF-4	SAE-4	7/16"-20 UNF-2B	1.50	0.93	0.56	0.31	1.00
WF-5	SAE-5	1/2"-20 UNF-2B	1.50	0.93	0.56	0.31	1.00
WF-6	SAE-6	9/16"-18 UNF-2B	1.50	0.93	0.56	0.31	1.00
WF-8	SAE-8	3/4"-16 UNF-2B	1.50	0.93	0.56	0.31	1.00
WF-10	SAE-10	7/8"-14 UNF-2B	2.13	1.38	0.69	0.44	0.44
WF-12	SAE-12	1 1/16"-12 UNF-2B	2.13	1.38	0.69	0.44	0.44
WF-14	SAE-14	1 3/16"-12 UNF-2B	2.38	1.66	0.75	0.5	1.75
WF-16	SAE-16	1 5/16"-12 UNF-2B	2.38	1.66	0.75	0.5	1.75
WF-20	SAE-20	1 5/8"-12 UNF-2B	2.69	2.00	0.75	0.5	2.13
WF-24	SAE-24	1 7/8"-12 UNF-2B	3.00	2.25	0.75	0.5	2.38
WF-32	SAE-32	2 1/2"-12 UNF-2B	3.50	2.63	0.84	0.59	2.88
WF-48	SAE-48	3 3/8"-12 UNF-2B	4.63	3.66	1.00	0.81	3.94

NOTE:

1. WF-48 has a 3 3/8-12 O-ring thread that was extrapolated from SAE standard threads.