



Schroeder Introduces The Servo Preserver™

A New High Pressure Servo Filter

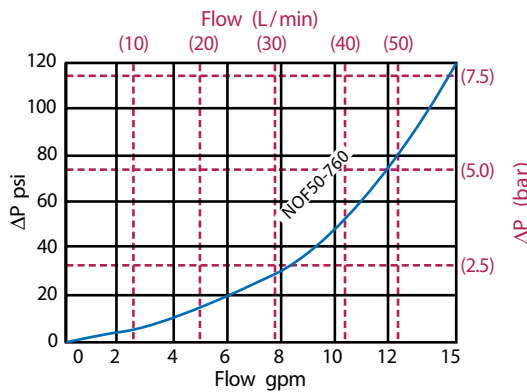


Designed for the Moog 760 Servo Patterns, the new Schroeder Servo Preserver Non-Bypass Filter helps to protect critical applications from contamination related servo valve failures.

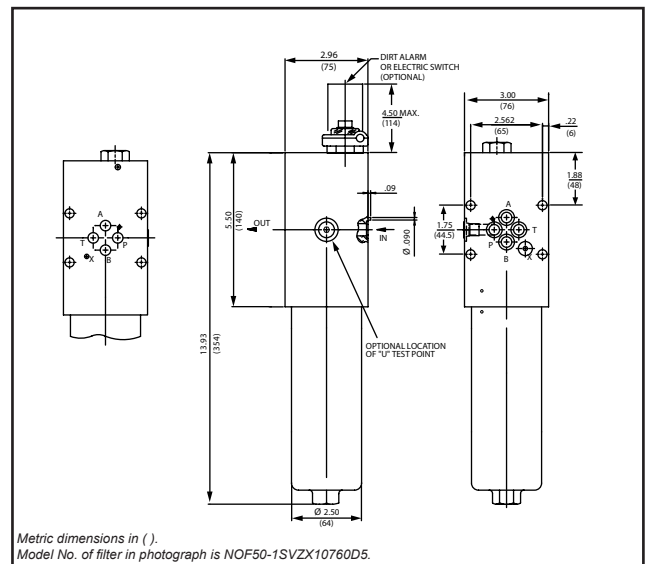


Features

- Localized protection at the servo helps to eliminate downtime
- Easily applied to new & existing systems
- Sandwich style 4 bolt design - no additional lines to connect
- All steel construction rated to 5,000 psi (345 bar) operating
- SchroederCheck Test/Sample point available
- Easy element change-outs for fast maintenance
- High efficiency/capacity elements: SVZX3, SVZX10 & SVZX25
- Crush resistant elements rated to 3,000 psid (210 bar)
- Electronic & Visual dirt alarms available
- Quick return on investment (ROI)



Typical Housing Pressure Drop
For Fluids With Specific Gravity of 0.86



Designed to protect the following commonly installed Servo Valves:

- Moog 760 series
- Moog 62
- Vickers SM4-20
- Parker BD15

Other configurations available, contact your local distributor



580 West Park Road • Leetsdale, PA 15056 • USA

Phone: (724) 318-1100 • Fax: (724) 318-1200

www.schroederindustries.com

L-2736 10/05