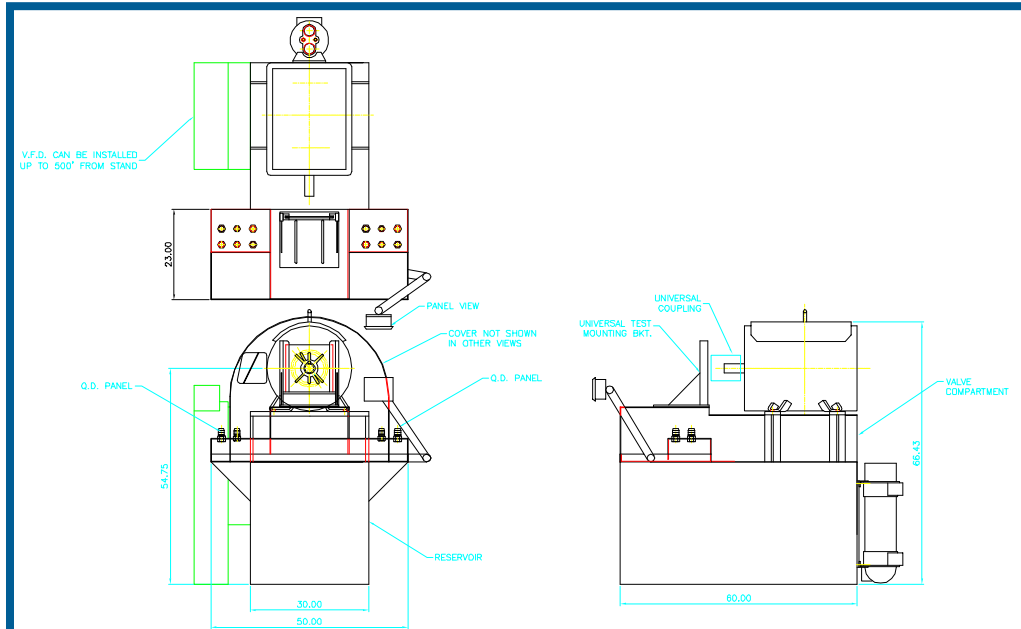




MODULAR TEST BENCH



We decided to make our test bench different. Our new modular design allows you to purchase only the applications you need. But, keep in mind that you can always add on additional modules later, as your testing needs change.



The Schroeder modular test bench utilizes a **PLC touch screen** and **complete panel view control** that provides step by step on screen instruction and manual. There are no gauges in sight.

Features

- Base test bench includes one testing module, commonly an open or closed loop system for testing pumps and motors
- Other modules include valve, cylinder, and hose testers
- In-line particle counter available
- Constant torque variable frequency drive
- Drive can be installed up to 500 ft. from bench
- Motor available at 50 HP, 100 HP, 125 HP or 150 HP
- Flow up to 100 GPM
- System pressure up to 5000 PSI
- RPM range from 300 to 3600, bidirectional
- Voltage available at 230 VAC or 460 VAC
- Motor and pump controlled electronically - no hydraulics
- Schroeder filtration package installed
- Air/water or air/air cooler optional
- Hot oil shuttle valve controlled hydrostatic drive cooling
- Drip pan furnished
- All digital control
- Stores testing history
- Can connect to a PC and printer through the RS32 port

