

Contents at a Glance

Detailed Contents: Hydraulic & Lube Filters	
Classification of filters sorted by pressure	2
Note to the Reader	4
Corporate Overview	5
Capabilities	6
Products	7
Section 1: Principles of Filtration	9
Contamination Control Fundamentals	10
Element Technical Data Fundamentals	14
Element Media Selection Considerations	18
Filter Selection Considerations	21
Ordering Information	25
Section 2: Filter Elements	27
Excellement® Z-Media™ Elements (Synthetic)	28
DirtCatcher® Elements	32
Series ZX High Collapse Elements (Synthetic)	32
CoreCentric® Coreless Element	33
BestFit® High Performance Replacement Elements	34
Melt-Blown and Spun Bonded Filter Elements	34
E Media Elements (Cellulose)	35
M Media Elements (Reusable Metal)	36
W Media Elements (Water Removal)	37
Aqua-Excellement™ High Efficiency Media (Water Removal)	38
Section 3: High Pressure Filters (1500 - 6500 psi)	39
Selection Guide	40
Top-Ported High Pressure Filters	41
Base-Ported High Pressure Filters	85
Servo Protection (Sandwich) Filters	117
Manifold Mount Filter Kit	129
Cartridge Elements for use in Manifold Applications	133
Hydrostatic (Bi-Directional) Flow Filters	101
Section 4: Medium Pressure Filters (up to 1500 psi)	135
Selection Guide	136
Top-Ported Medium Pressure Filters	137
Base-Ported Medium Pressure Filters	153
Section 5: Low Pressure Filters (up to 500 psi)	189
Selection Guide	190
Top-Ported Low Pressure Filters	191
Tank-Mounted Low Pressure Filters	219
Special Feature Tank-Mounted Low Pressure Filters	255
Severe Duty Tank-Mounted Filters	263
Accessories for Tank-Mounted Filters	267
Spin-On Low Pressure Filters	269
Section 6: Suction Filters	281
Selection Guide	282
Section 7: Water Service Filters	291
Selection Guide	292
Section 8: GeoSeal™ Filters	297
Selection Guide	298
Section 9: Reservoir Accessories	305
Air Breathers	307
Suction Separators and Strainers	324
Oil Sight Glasses	325
Appendices	329
Appendix A: Filter Dirt Alarm® Selection	329
Appendix B: Patented Non-Bypassing Filtration: A Better Way That Does Not Require High Crush Elements	342
Appendix C: Element Case Weights	342
Appendix D: Viscosity Charts	343
Glossary	344

Detailed Contents: Hydraulic & Lube Filters

		Pressure psi (bar)	Flow gpm (L/min)	Page	
SECTION 3: High Pressure Filters (1500 - 6500 psi)	Top-Ported High Pressure Filters				
	NF30	3000 (210)	20 (75)	41	
	NFS30	3000 (210)	20 (75)	45	
	YF30	3000 (210)	25 (100)	49	
	CFX30	3000 (210)	30 (115)	53	
	DF40	4000 (275)	30 (115)	57	
	CF40	4000 (275)	45 (170)	61	
	PF40	4000 (275)	50 (190)	65	
	RFS50	5000 (345)	30 (115)	69	
	RF60	6000 (415)	30 (115)	73	
	CF60	6000 (415)	50 (190)	77	
	VF60	6000 (415)	70 (265)	81	
	LW60	6000 (415)	300 (1135)	85	
	Base-Ported High Pressure Filters				
	KF30	3000 (210)	100/150 (380/570)	89	
	GKF30 GeoSeal™	3000 (210)	100/150 (380/570)	299	
	TF50	5000 (345)	40 (150)	93	
	KF50	5000 (345)	100/150 (380/570)	97	
	GKF50 GeoSeal™	5000 (345)	100/150 (380/570)	299	
	KC50	5000 (345)	100/150 (380/570)	101	
	GKC50 GeoSeal™	5000 (345)	100/150 (380/570)	299	
	MKF50	5000 (345)	200 (760)	105	
	GMKF50 GeoSeal™	5000 (345)	200 (760)	300	
	KC65	6500 (450)	100 (380)	109	
	GKC65 GeoSeal™	6500 (450)	100 (380)	300	
	Servo Protection (Sandwich) Filters DO7, DO3, Moog, Parker & Vickers				
	NOF30-05	3000 (210)	12 (45)	113	
	NOF50-760	5000 (345)	15 (57)	117	
	FOF60-03	6000 (415)	12 (45)	121	
	Manifold Mount Filter Kit (Bowls & Installation Drawings)				
NMF30	3000 (210)	20 (75)	125		
RMF60	6000 (415)	30 (115)	127		
Cartridge Elements for use in Manifold Applications					
14-CRZX10	3000 (210)	6 (23)	129		
20-CRZX10	3000 (210)	12 (45)	130		
Hydrostatic (Bi-Directional) Flow High Pressure Filters					
KFH50 (Base-Ported)	5000 (345)	70 (265)	131		
High Pressure Water Service Filters					
WKC50	5000 (345)	100 (380)	293		
SECTION 4: Medium Pressure Filters (up to 1500 psi)	Top-Ported Medium Pressure Return Line				
	GH	725 (50)	35 (130)	137	
	RLT	800 (55)	70 (265)	141	
	KF8	800 (55)	100 (380)	145	
	GKF8 GeoSeal™	800 (55)	100 (380)	301	
	SRLT	1400 (100)	25 (100)	149	
	Base-Ported Medium Pressure Filters				
	K9	900 (60)	100 (380)	153	
	GK9 GeoSeal™	900 (60)	100 (380)	301	
	2K9	900 (60)	100 (380)	157	
	G2K9 GeoSeal™	900 (60)	100 (380)	302	
	3K9	900 (60)	100 (380)	161	
	G3K9 GeoSeal™	900 (60)	100 (380)	302	
	QF5	500 (35)	300 (1135)	165	
	3QF5	500 (35)	300 (1135)	169	
	QFD5	500 (35)	350 (1325)	173	
	QF15	1500 (100)	450 (1700)	177	
	QLF15	1500 (100)	500 (1900)	181	
	SSQLF15	1500 (100)	500 (1900)	185	
	Medium Pressure Water Service Filters				
	Top-Ported	WKF8	800 (55)	100 (380)	293
	Top-Ported	WKFN8	800 (55)	100 (380)	293
	Top-Ported	WRLT	800 (55)	70 (265)	294
Base-Ported	WQF15	1500 (100)	450 (1700)	294	
Base-Ported	WQLF15	1500 (100)	500 (1900)	295	

Detailed Contents (cont.)

		Pressure psi (bar)	Flow gpm (L/min)	Page	
SECTION 5: Low Pressure Filters (up to 500 psi)	Top-Ported Low Pressure Filters				
	IRF	100 (7)	100 (380)	191	
	TF1	300 (120)	30 (120)	195	
	KF3	300 (20)	100 (380)	199	
	GKF3 GeoSeal™	300 (20)	100 (380)	303	
	KL3	300 (20)	120 (455)	203	
	GKL3 GeoSeal™	300 (20)	120 (455)	303	
	LF1-2"	300 (20)	120 (455)	207	
	MLF1	300 (20)	200 (760)	211	
	GMLF1 GeoSeal™	300 (20)	200 (760)	304	
	RLD	350 (24)	100 (380)	215	
	Tank-Mounted (In-Tank/Tank Top) Low Pressure Filters				
	KT	50 (3.5)	80 (300)	219	
	MTA	100 (7)	15 (55)	223	
	MTB	100 (7)	35 (135)	227	
	ZT	100 (7)	40 (150)	231	
	RT	100 (7)	100 (380)	235	
	GRT GeoSeal™	100 (7)	100 (380)	304	
	RTI	100 (7)	120 (455)	239	
	LRT	100 (7)	150 (570)	243	
	BFT	100 (7)	300 (1135)	247	
	QT	100 (7)	450 (1700)	251	
	Special Feature Tank-Mounted Low Pressure Filters				
	Internal	KTK	100 (7)	100 (380)	255
	Internal	LTK	100 (7)	150 (570)	259
	Severe Duty Tank-Mounted				
		MRT	900 (62)	150 (570)	263
Spin-On Low Pressure Filters					
	PAF1	100 (7)	20 (75)	269	
	MAF1	100 (7)	50 (190)	273	
	MF2	150 (10)	60 (230)	277	
Low Pressure Water Service Filters					
	WLF1	300 (20)	120 (455)	293	
	WKF3	300 (20)	100 (380)	296	

SECTION 6: Suction Filters	Tank-Mounted Suction Filter				
		ST	20 (75)	283	
	In-Line Magnetic Suction Separator				
		TF-SKB	Suction	12.5 (47)	287
	Tank-Mounted Magnetic Suction Separators				
	KF3-SKB	Suction	30 (130)	288	
	BFT-SKB	Suction	75 (285)	289	

Note to the Reader

The aim of our catalog is to provide the information and guidance you'll need to make informed and appropriate choices for your filtration needs.

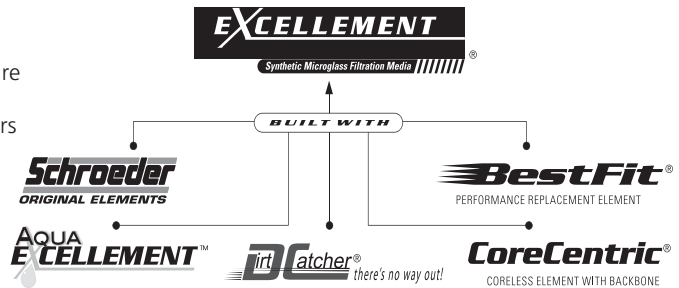
Illustrated and easy to understand, Section 1 is now widely used as a training tool by many companies, including original equipment manufacturers for whom Schroeder provides value-added products. The revised Section 1 continues to serve as an effective "primer" on contamination control fundamentals. In this section, we also provide filtration information and guidance for selecting the optimal filter and element media for your application.

Section 1 also explains recent changes in industry standards regarding how fluid cleanliness is defined and measured. Recent technological advancements in the measurement of microscopic particles, coupled with the establishment of a new standard test dust for calibration purposes, necessitated these changes. Although the new standards may seem confusing at first, they enable more accurate sizing of dirt particles and reduce variability in output among different automatic particle counters. The end result is more reliable data for the user.

In Section 2, you'll find extensive technical data on Schroeder's Excellement® Z-Media, which combines high efficiency, low pressure drop and exceptional dirt holding capacity. Schroeder's design engineers have also given special attention to developing more environmentally friendly products, such as Corecentric® elements, which contain no metal and can be crushed, shredded or burned.

Sections 3 through 9 describe the types of contamination control products and accessories we offer. Whether your hydraulic system requires pressure filters, tank-mounted filters, return-line filters, or some combination of these, this updated catalog will help you find the right Schroeder filter to do the job. Of course, every filter comes with a Schroeder original element, available in a wide variety of media and micron ratings.

Dirt Alarm®, BestFit®, Excellement®, DirtCatcher® and CoreCentric® are registered trademarks of Schroeder Industries.



Visit Us Online...

Schroeder's web site, www.schroederindustries.com, now offers a helpful online database. Replacing filter elements is simpler than ever before with our Online Cross-Reference Guide to Bestfit® replacement elements titled Element Search. With this user-friendly guide you can match 41,000 filter elements from 150 other manufacturers with appropriate Bestfit replacements.



Corporate Overview



Schroeder Industries, an ISO 9001:2008 certified company, focuses on developing filtration and fluid service products for our customers in the fluid power industry and is proud of our proven track record of providing quality products over the last sixty years. The designs you see in this catalog are the result of thousands of hours of field testing and laboratory research...and decades of experience.

Schroeder was one of the first companies to demonstrate the need for, and benefits of, hydraulic filtration. We pioneered the development of micron filtration, helping to set performance standards in industrial fluid power systems. As a result, Schroeder is now a leader in filtration and fluid conditioning—and the proof of our expertise lies in our broad mix of unsurpassed products. Our mission statement reflects our continuing commitment to excellence:

Partnerships
Innovating products, solutions, processes and services to improve performance and efficiency in industry.

We design solutions for industry and for the success of our customers by:

- Optimizing the use of technology with applications
- Using an efficient, timely customization process to fill specific customer needs
- Increasing manufacturing capacity and streamlining operations
- Preserving our reputation for reliability
- Expanding globally to support our customers and stay current with new technologies
- Leveraging and sharing our knowledge to meet challenges openly
- Nurturing a creative, cooperative culture committed to the individual and to providing the best solutions for our customers

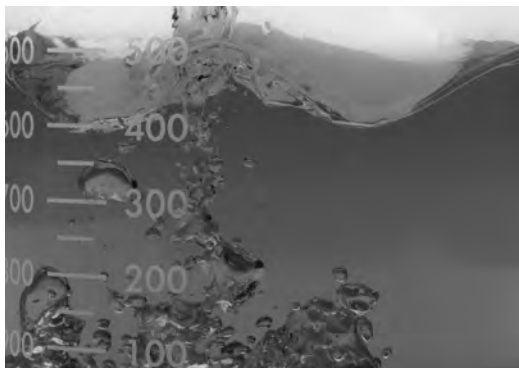
Our goal is to be your filtration partner. Our expertise in filtration technology, our superior filter and element manufacturing capabilities, and our dedication to customer service and product support are the reasons we're considered "The Filter Company."

We are committed to providing the best available filter products to meet necessary cleanliness levels at a competitive price. As a cost-effective quality producer, we can work with your purchasing department to supply contamination control technology or develop long-range pricing programs that can improve your company's bottom line.

Schroeder's products, technical expertise, commitment to research and development, and ongoing improvements in manufacturing enable us to provide products and services that improve performance and efficiency in many major industries, including:

- | | | |
|--------------------------|--------------------|--|
| ■ Agricultural Equipment | ■ Forestry | ■ Pulp and Paper |
| ■ Automotive | ■ Machine Tools | ■ Railroads |
| ■ Chemical Processing | ■ Marine | ■ Recreation/Entertainment/
Amusement Parks |
| ■ Construction Equipment | ■ Mining Equipment | ■ Steel |
| ■ Defense | ■ Mobile Vehicles | ■ Refuse |
| ■ Energy Production | ■ Plastics | |

Markets Served



Capabilities

Product Distribution

Schroeder Industries has in place a strategically located international distribution network, supported by our professional and experienced sales and marketing team. Distributor personnel are trained in the important aspects of filter application by Schroeder in training sessions held at our factory and around the globe. The effectiveness of our product and service support is multiplied by utilizing Schroeder's extensive distributor network. All Schroeder Industries distributors meet very strict criteria to enhance our ability to serve the needs of our valued customers.

Schroeder's distributor network includes over 100 distributor locations throughout Europe, the United Kingdom, South Africa, Australia, Asia, North America and South America, so that customers worldwide can rely on Schroeder's exceptional support.

Manufacturing and Testing

Schroeder Industries' corporate headquarters are located in Leetsdale, PA (USA) with an additional manufacturing facility in Cumberland, MD (USA). Filter housings and diagnostic and specialty products are manufactured at our Pittsburgh plant, while filter elements are manufactured in our Cumberland plant. Both facilities have the skilled workforce and the capacity to meet our customers' needs. Schroeder's research and development center as well as our contamination control laboratory are located at our corporate headquarters.



Schroeder Industries' products are continually tested using the latest ISO and NFPA test procedures in our engineering lab. Our dynamic test stands are in constant operation, subjecting our filter housings to cyclic pressure to verify their rated fatigue and burst pressures per NFPA Standard T2.6.1. Statistically sampled elements are tested to ensure fabrication integrity in the manufacturing process. They are also tested for efficiency and dirt-holding capacity in a multi-pass test stand, equipped with in-line particle counting capabilities, which are calibrated to ISO standards.

Extensive testing is conducted to ensure compatibility with various hydraulic fluids, including the newest fire-resistant fluids, per ISO 2943 Standard. Flow fatigue tests are run to evaluate the structural strength of elements, per ISO 3724 Standard.

Design and Testing Standards of Schroeder Filter Housings

Description	Standard
Burst Pressure Test	NFPA/T-2.6.1
Fatigue Testing	NFPA/T-2.6.1
Pressure/Life Rating of a Spin-On Filter	NFPA/T-3.10.17
Pressure Drop vs. Flow	ISO 3968

Design and Testing Standards of Schroeder High Efficiency Elements

Description	Standard
Element Collapse (Burst)	ISO 2941
Fabrication Integrity	ISO 2942
Material Compatibility	ISO 2943
End Load	ISO 3723
Element Flow Fatigue	ISO 3724
Pressure Drop vs. Flow	ISO 3968
Multi-Pass	ISO 16889



Products

An Open Invitation

We invite you to present us with any specific filtration challenge you may experience. Schroeder will design and make filters to meet your specific requirements. To find out more, and/or obtain a quote, call us to speak with a sales representative or technical specialist. They can help determine the optimal filtration strategy for a given system. While the quantity of any product to be manufactured to a customer's needs will determine the economic feasibility of a particular project, in many cases, we can offer modified products in relatively small quantities at competitive prices and short lead times.

Over the years, Schroeder design engineers have encountered virtually every type of hydraulic system. We are proud of our continuing success in providing "value-added products" for our customers, that is, making or modifying our products to meet their specific needs. When customers order products from Schroeder, they are assured of a reliable source of supply, supply consistent and prompt service, and direct support. Pre- and post-technical service is provided to ensure customer satisfaction.

So if you're faced with a filtration dilemma, call us.
Schroeder Industries: Advanced Fluid Conditioning Solutions™.

Schroeder
INDUSTRIES

