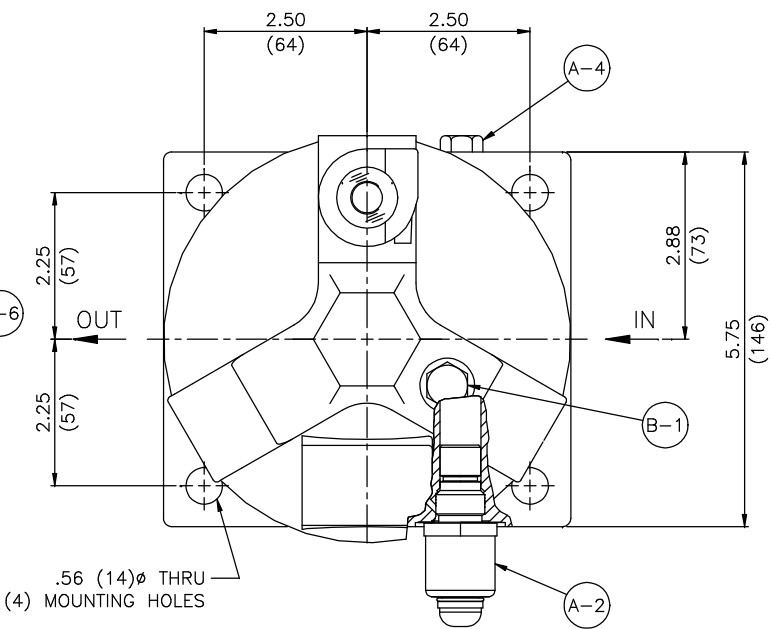
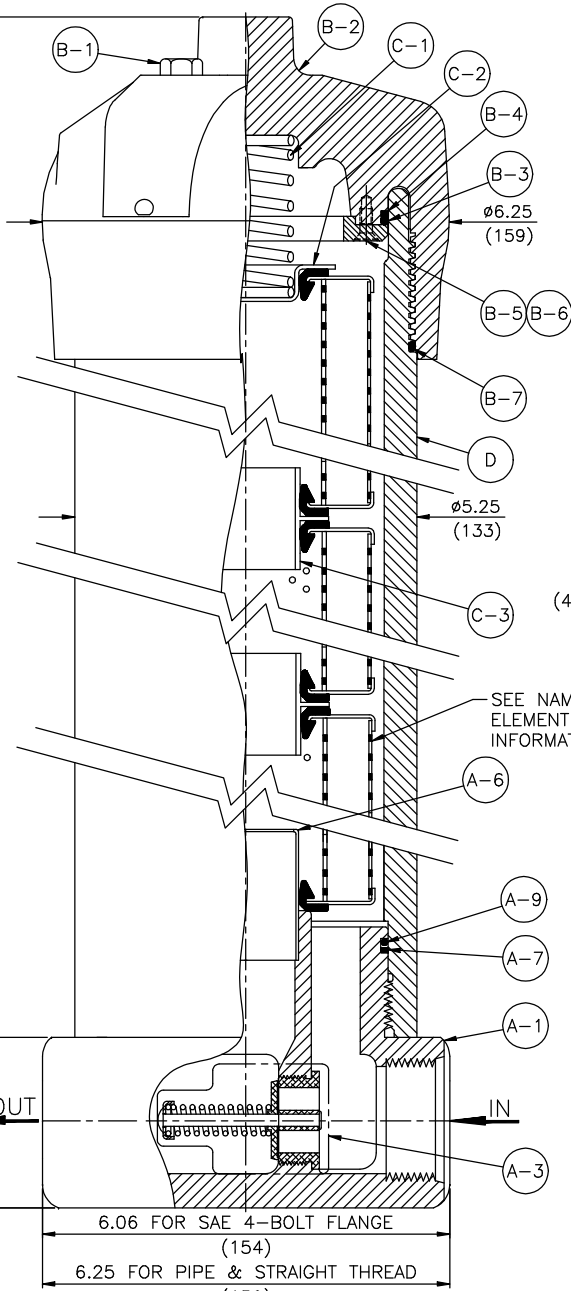
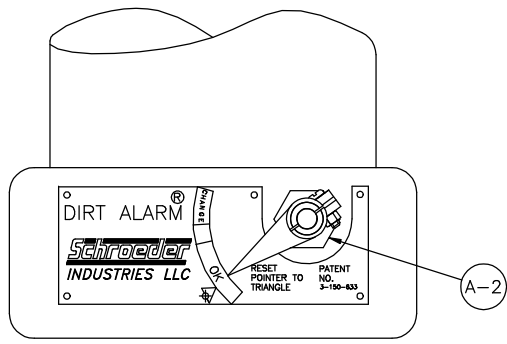


1K=14.90 (378)
 2K=24.14 (613)
 3K=33.60 (853)

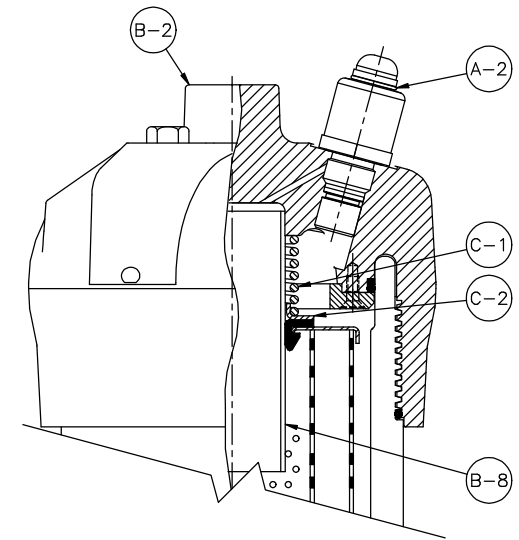
2.62 (67) PORTING P.S. & F
 3.25 (83) PORTING P32
 1.34 (34) PORTING P.S. & F
 1.62 (41) PORTING P32



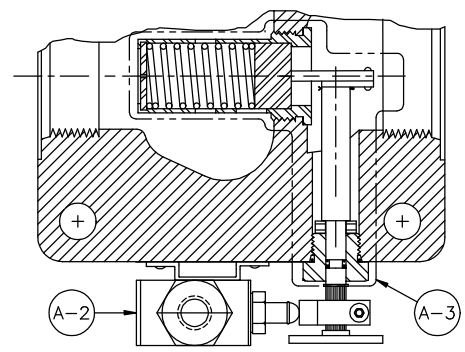
BLOCK LOCATION
 DIRT ALARM MECHANICAL CARTRIDGE "D5"
 DIRT ALARM ELECTRICAL CARTRIDGE
 MOUNTED IN SAME LOCATION



BLOCK LOCATION
 DIRT ALARM VISUAL POINTER "D"



CAP LOCATION
 DIRT ALARM MECHANICAL CARTRIDGE "D5C"
 DIRT ALARM ELECTRICAL CARTRIDGE NOT
 AVAILABLE IN CAP.



BLOCK LOCATION
 DIRT ALARM ELECTRICAL CAM OPERATED "MS"

PATENT NO. 6,843,378

MATERIAL	DEC. TOLERANCES	APP.	REV. CARD: 10256
2 PL. ± --	CHK. GWARDNIK	5/14/02	REV. DATE: 10/3/08
3 PL. ± --	DWN. T. JOOS	3/12/02	B/M
ANG. ± --	DISK NO.		P/N

PARTS LIST OF
 KC50 FILTER

Schroeder
 INDUSTRIES LLC
 www.schroederindustries.com

REV. 6 DRAWING NO. D-8878
 SCALE: FULL SHT. 1 OF 2

KC50 PARTS LIST

ITEM	QUAN.	PART DESCRIPTION	PART NUMBER				ITEM	QUAN.	PART DESCRIPTION	PART NUMBER			
			ORIGINAL	SERIES A	SERIES B	SERIES C				ORIGINAL	SERIES A	SERIES B	SERIES C
A	1	BLOCK ASSEMBLY											
		KC50-S * 1.88-12 STR. THD. PORT	A-LF-2523-40	A-LF-2523-40			B	1	CAP ASSEMBLY COMPONENT PARTS				
		KC50-P * 1.50 NPTF PORT	A-LF-2524-40	A-LF-2524-40			B-1	1	PLUG ASSEMBLY, BLEED	A-LF-1744	A-LF-1744		
		KC50-F * 1.50 SAE 4 BOLT FLANGE 6000 PSI	A-LF-2526-40	A-LF-2526-40			B-2	1	CAP (WITHOUT DIRT ALARM IN CAP)	LF-6013	LF-6013-1		
		KC50-O * SUB-PLATE PORT	A-LF-2655-40	A-LF-2655-40				1	CAP (WITH DIRT ALARM IN CAP)	LF-6014	LF-6014-1		
		KC50-P32 * 2.00 NPTF PORT					B-3	1	"O" RING	LFT-105	LFT-105		
		KC50-B * 1.50 BSPP PORT	A-LF-6661-40	A-LF-6661-40			B-4	1	BACKUP RING	LF-2112	LF-2112		
		KC50-S-D5 1.88-12 STR. THD. PORT	A-LF-2527-40	A-LF-2527-40			B-5	1	"O" RING RETAINER	LF-6188	LF-6188		
		KC50-P-D5 1.50 NPTF PORT	A-LF-2528-40	A-LF-2528-40			B-6	3	PHILLIPS, FLAT HD. MACHINE SCREW	LF-7430	LF-7430		
		KC50-F-D5 1.50 SAE 4 BOLT FLNG 6000 PSI	A-LF-3590-40	A-LF-3590-40			B-7	1	O-RING	LF-5877	LF-5877		
		KC50-O-D5 SUB-PLATE PORT	A-LF-2535-40	A-LF-2535-40			B-8	1	ELEMENT BUSHING	LF-6374	LF-6374		
		KC50-B-D5 1.50-11 BSPP PORT	A-LF-5160-40	A-LF-5160-40			C	1	ELEMENT ACCESSORY ASSEMBLY COMPONENT PARTS				
		KC50-P32-D5 2.00 NPTF PORT	A-LF-5245-40	A-LF-5245-40			C-1	1	COMPRESSION SPRING	LF-3236	LF-3236		
		KC50-P-D 1.50 NPTF PORT	A-LF-1602-40	A-LF-1602-40				1	COMPRESSION SPRING (DIRT ALARM IN CAP)	LF-2638	LF-2638		
		KC50-P32-D 2.00 NPTF PORT	A-LF-5212-40	A-LF-5212-40			C-2	1	COMPRESSION SPRING PLATE	LF-582A-1	LF-582A-1		
		KC50-S-D 1.88-12 STR. THD. PORT	A-LF-1578-40	A-LF-1578-40				1	COMPRESSION SPRING PLATE (DIRT ALARM IN CAP)	LF-2629	LF-2629		
		KC50-F-D 1.50 SAE 4-BOLT FLANGE 6000 PSI	A-LF-1702-40	A-LF-1702-40			C-3	1	ELEMENT CONNECTOR 2K LENGTH ONLY	LF-1997	LF-1997		
		KC50-O-D SUB-PLATE PORT	A-LF-1587-40	A-LF-1587-40				2	ELEMENT CONNECTOR 3K LENGTH ONLY	LF-1997	LF-1997		
B	1	CAP ASSEMBLY											
		WITH NO DIRT ALARM IN CAP	A-LF-6229	A-LF-6229-1									
		WITH DIRT ALARM	A-LF-6376	A-LF-6376-1									
C	1	ELEMENT ACCESSORY ASSEMBLY											
		(1) ELEMENT LENGTH	A-LF-982	A-LF-982									
		(2) ELEMENT LENGTH	A-LF-992	A-LF-992									
		(3) ELEMENT LENGTH	A-LF-994	A-LF-994									
D	1	ENCLOSURE											
		(1) ELEMENT LENGTH	LF-6017	LF-6017-1									
		(2) ELEMENT LENGTH	LF-6018	LF-6018-1									
		(3) ELEMENT LENGTH	LF-6019	LF-6019-1									
E	1	FILTER SEAL KIT ASSEMBLY											
		FILTER SEAL KIT BUNA "N"	A-LF-6636	A-LF-6636									
		FILTER SEAL KIT E.P.R.	A-LF-6636B	A-LF-6636B									
		FILTER SEAL KIT VITON	A-LF-6636V	A-LF-6636V									
A	1	BLOCK ASSEMBLY COMPONENT PARTS											
A-1	1	KC50-S * 1.88-12 STR. THD. PORT	LF-2581	LF-2581									
		KC50-P * 1.50 NPTF PORT	LF-2580	LF-2580									
		KC50-F * 1.50 SAE 4 BOLT FLANGE 6000 PSI	LF-2583	LF-2583									
		KC50-O * SUB-PLATE PORT	LF-2584	LF-2584									
		KC50-B * 1.50-11 BSPP PORT	LF-2815	LF-2815									
A-2	1	DIRT ALARM, NO ELEMENT INDICATOR (N)	A-LF-2945	A-LF-2945									
		DIRT ALARM MECHANICAL CARTRIDGE (D5),(D5C)	D5-40	D5-40									
		DIRT ALARM ELECTRICAL CARTRIDGE N/S (MS5)	SEE NOTE 6	SEE NOTE 6									
		DIRT ALARM VISUAL POINTER (D)	A-LF-283CP-1	A-LF-283CP-1									
		DIRT ALARM ELEC. CAM. OPER.(SEE NOTE 4)(MS)	LF-376	LF-376									
A-3	1	BYPASS VALVE AND LINKAGE ASSEMBLY	A-LF-1389-40	A-LF-1389-40									
		BYPASS VALVE ASSEMBLY	A-LF-2434-40	A-LF-2434-40									
A-4	1	PLUG	HS-81	HS-81									
A-5	2	PLUG (FOR SUB PLATE BLOCK ONLY) N/S	LF-777	LF-777									
A-6	1	BUSHING	LF-571	LF-571									
A-7	1	BACKUP RING	LF-2112	LF-2112									
A-8	2	"O" RING (FOR SUB-PLATE BLOCK ONLY) N/S	LF-1015-90	LF-1015-90									
A-9	1	"O" RING	LFT-105	LFT-105									
A-10	1	PLUG ASSEMBLY (NO INDICATOR IN BLOCK) N/S	A-LF-2550	A-LF-2550									

- NOTES:**
- * INDICATES NO DIRT ALARM
 D5 INDICATES RED POP UP VISUAL INDICATOR
 MS CAM OPERATED ELECTRICAL SWITCH
 D VISUAL POINTER STYLE INDICATOR
 N NO ELEMENT INDICATOR
 - BLOCK ASSEMBLIES INCLUDE "O" RINGS AND VALVE ASSEMBLY.
 - FILTER SEAL KIT ASSEMBLY INCLUDES ALL SOFT SEALS EXCEPT ELEMENT GROMMET.
 - LF-376 WHEN USED REQUIRES A-LF-831-1 KIT.
 - CONTACT FACTORY FOR SPECIAL "G" NUMBER FILTERS AND FOR NONSTANDARD BYPASS SETTINGS.
 - CONTACT FACTORY FOR AVAILABILITY OF VARIOUS ELECTRICAL DIRT ALARMS AND PART NUMBERS OR CONSULT SCHROEDER FILTRATION PRODUCTS CATALOG "SCHROEDER CARTRIDGE DIRT ALARMS" SECTION.
 - NOTE A SERIES "A" CAP WILL FIT ON A SERIES "ORIGINAL" ENCLOSURE
 A SERIES "ORIGINAL" CAP WILL NOT FIT ON A SERIES "A" ENCLOSURE
- N/A = NOT AVAILABLE
N/S = NOT SHOWN

KC50 FILTER SERIES LIST			
SERIES	DATE ISSUED	DATE IMPLEMENTED	DESCRIPTION
A	8/02	9/02	CHANGED THREAD PROFILE ON CAP