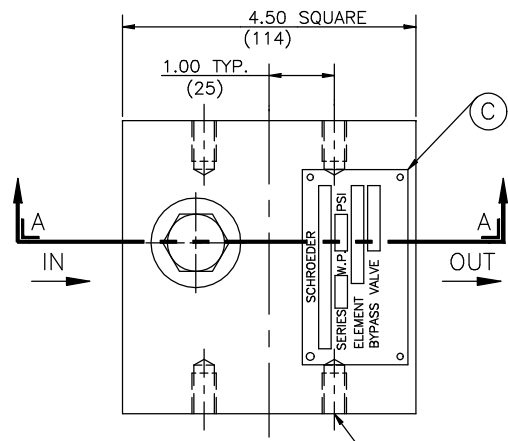
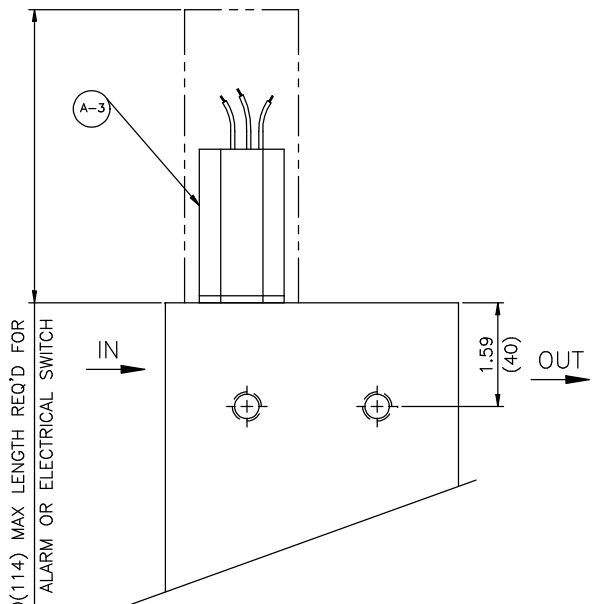


SECTION A-A

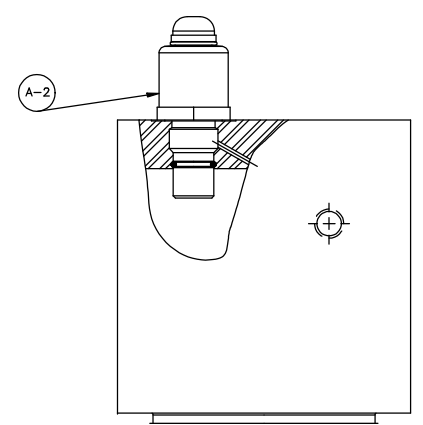


.38-16UNC-2B  
x .62 (16) DEEP  
OR  
M10 x 1.25 x (16) DEEP  
(4) MOUNTING HOLES

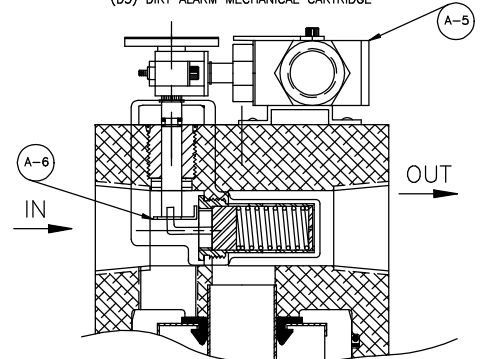


HEAD LOCATION  
DIRT ALARM ELECTRICAL CARTRIDGE

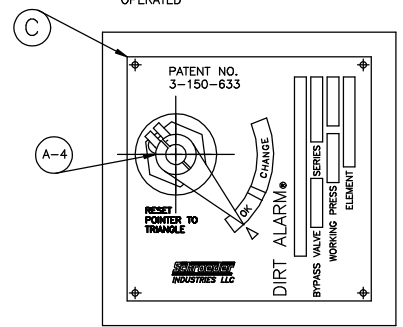
4.50(114) MAX LENGTH REQ'D FOR  
DIRT ALARM OR ELECTRICAL SWITCH



HEAD LOCATION  
(D5) DIRT ALARM MECHANICAL CARTRIDGE



HEAD LOCATION  
(MS) DIRT ALARM ELECTRICAL CAM  
OPERATED



HEAD LOCATION  
(D) DIRT ALARM VISUAL POINTER

MATERIAL	DEC. TOLERANCES	APP.	REV. CORR: 10545
2 PL. ±	---	CHK. M. SCHMITT	5/1/02 REV. DATE: 10/7/08
3 PL. ±	---	DWN. D. CALDWELL	4/26/02 B/M
ANG. ±	---	DISK NO. ---	P/N

CF40 PARTS LIST DWG.



REV.	DRAWING NO.
3	D-8854

SCALE: FULL SHT. 1 OF 2

# CF40 PARTS LIST

ITEM	QUAN.	PART DESCRIPTION	PART NUMBER
A	1	HEAD ASSEMBLY	ORIGINAL
		CF40-S * 1.62-12 STR. THD. PORT	A-DF-470-40
		CF40-P * 1.25 N.P.T.F. PORT	A-DF-471-40
		CF40-B * 1.25-11 BSPP PORT	A-DF-975-40
		CF40-S-D 1.62-12 STR. THD. PORT	A-DF-164-40
		CF40-P-D 1.25 N.P.T.F. PORT	A-DF-137-40
		CF40-B-D 1.25-11 BSPP PORT	A-DF-1033
		CF40-S-MS 1.62-12 STR. THD. PORT	A-DF-397-40
		CF40-P-MS 1.25 N.P.T.F. PORT	A-DF-138-40
		CF40-B-MS 1.25-11 BSPP PORT	A-DF-534-40
B	1	BOWL ASSEMBLY	
		IC ELEMENT LENGTH	DF-801
		ICC ELEMENT LENGTH	DF-802
C	1	MODEL# NAMEPLATE, AND STUD ASSEMBLY	A-DF-72
		DIRT ALARM NAMEPLATE	DF-121
D	1	FILTER SEAL KIT ASSEMBLY	
		FILTER SEAL KIT (BUNA N)	A-DF-557
		FILTER SEAL KIT (E.P.R.)	A-DF-557B
		FILTER SEAL KIT (VITON)	A-DF-557V
E	1	"O" RING	DF-6
F	1	BACK-UP RING	DF-7-1
A	1	HEAD ASSEMBLY COMPONENT PARTS	
A-1	1	CF40-S * 1.62-12 STR. THD. PORT	DF-482
		CF40-P * 1.25 N.P.T.F. PORT	DF-481
		CF40-B * 1.25-11 BSPP PORT	DF-976
		CF40-S-D 1.62-12 STR. THD. PORT	DF-119-1
		CF40-P-D 1.25 N.P.T.F. PORT	DF-118-1
		CF40-B-D 1.25-11 BSPP PORT	DF-432
		CF40-S-MS 1.62-12 STR. THD. PORT	DF-417
		CF40-P-MS 1.25 N.P.T.F. PORT	DF-416
		CF40-B-MS 1.25-11 BSPP PORT	DF-431
A-2	1	DIRT ALARM MECHANICAL CARTRIDGE (D5)	D5-40
A-3	1	ELECTRICAL SWITCH (MS5AC/DC/LC FAMILY)	(SEE NOTE 5)
A-4	1	DIRT ALARM VISUAL POINTER (D)	A-LF-283CP-1
A-5	1	DIRT ALARM ELECTRICAL CAM OPER. (M5) (SEE NOTE 4)	LF-376
A-6	1	BYPASS VALVE AND LINKAGE ASSEMBLY	A-DF-136-40
A-7	1	BYPASS VALVE ASSEMBLY	A-LF-2427-40
A-8	1	BUSHING	TF-241
A-9	1	PLUG ASSEMBLY (NO INDICATOR IN HEAD)	A-LF-2550

**NOTES:**

- 1) \* INDICATES NO INDICATOR.  
D INDICATES VISUAL POINTER INDICATOR.  
D5 INDICATES ORANGE POP-UP VISUAL INDICATOR.  
MS INDICATES ELECTRIC SWITCH.
- 2). HEAD ASSEMBLIES INCLUDE BYPASS VALVE ASSEMBLY.
- 3). FILTER SEAL KIT ASSEMBLY INCLUDES ALL SOFT SEALS EXCEPT ELEMENT GROMMET.
- 4). LF-376 WHEN USED REQUIRES A-LF-831-1 KIT.
- 5). ELECTRICAL SWITCHES  
CONTACT FACTORY FOR AVAILABILITY OF VARIOUS ELECTRICAL DIRT ALARMS  
AND PART NUMBERS OR CONSULT SCHROEDER FILTRATION PRODUCTS CATALOG  
"SCHROEDER CARTRIDGE DIRT ALARMS" SECTION
- 6). CONTACT FACTORY FOR SPECIAL "G" NUMBER FILTERS, OR TO OBTAIN  
MORE INFORMATION REGARDING THIS FILTER.

N/S= NOT SHOWN  
N/A= NOT AVAILABLE

CF40 PARTS LIST DRAWING



REV.	DRAWING NO.
3	D-8854
SCALE: FULL SHT. 2 OF 2	