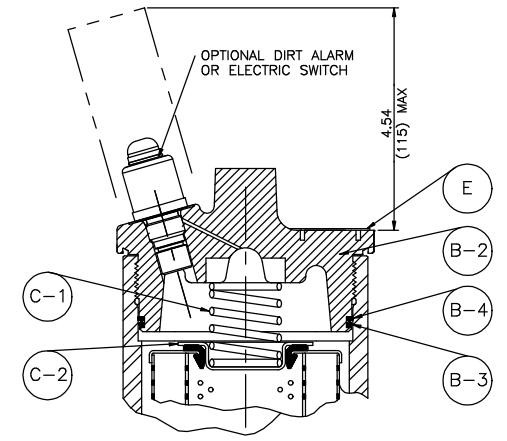
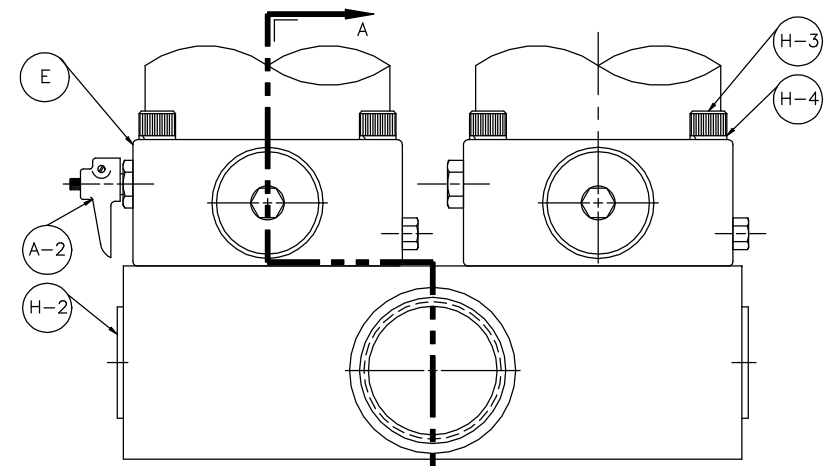


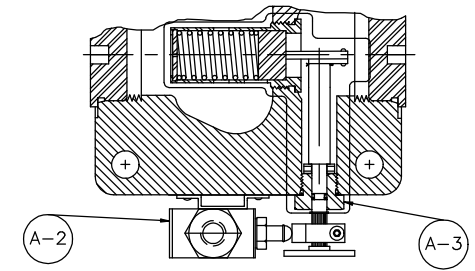
BLOCK LOCATION
DIRT ALARM MECHANICAL CARTRIDGE
SERIES: "B"
DIRT ALARM ELECTRICAL CARTRIDGE
MOUNTED IN SAME LOCATION



CAP LOCATION
DIRT ALARM MECHANICAL CARTRIDGE
SERIES: "B"
DIRT ALARM ELECTRICAL CARTRIDGE
NOT AVAILABLE IN CAP



BLOCK LOCATION
DIRT ALARM VISUAL POINTER
SERIES: "A"



BLOCK LOCATION
DIRT ALARM ELECTRICAL CAM OPERATED
SERIES: "A"

MATERIAL	DEC. TOLERANCES	APP.	REV. CARD: 7117
2 PL. ±	---	CHK. S. MITCHELL	1/22/88
3 PL. ±	---	DWN. M. SCHMITT	12/17/87
ANG. ±	---	DISK NO.	P/N

REV. DATE: 10/6/08
B/M

PARTS LIST FOR MKF50 FILTER



REV. 6
DRAWING NO. D-5703
SCALE: 3/4=1 | SHT. 1 OF 2

MKF50 PARTS LIST

ITEM	QUAN.	PART DESCRIPTION	PART NUMBER		
			SERIES A	SERIES B	SERIES C
A	1	BLOCK ASSEMBLY			
		KF50-0 * SUB-PLATE PORT	A-LF-2655	A-LF-2655	A-LF-2655-40
		KF50-0-D SUB-PLATE PORT	A-LF-1611	A-LF-1611	A-LF-1587-40
		KF50-0-MS SUB-PLATE PORT	A-LF-1701	A-LF-1701	A-LF-1701-40
B		HOUSING PLUG ASSEMBLY (2 PER FILTER)			
		WITH NO INDICATOR IN CAP	A-LF-2312	A-LF-2312	A-LF-6114
		WITH VISUAL INDICATOR	N/A	A-LF-2537	A-LF-2537-40
C		ELEMENT ACCESSORY ASSEMBLY			
		(1) ELEMENT LENGTH	A-LF-982	A-LF-982	A-LF-982
		(2) ELEMENT LENGTH	A-LF-992	A-LF-992	A-LF-992
		(3) ELEMENT LENGTH	A-LF-994	A-LF-994	A-LF-994
D		TUBE (2 PER FILTER)			
		(1) ELEMENT LENGTH	LF-2285	LF-2285	LF-2285
		(2) ELEMENT LENGTH	LF-2286	LF-2286	LF-2286
		(3) ELEMENT LENGTH	LF-2287	LF-2287	LF-2287
E		CAP NAMEPLATE AND STUD ASSEMBLY	LF-1453	LF-2844	LF-2844
		BLOCK NAMEPLATE AND STUD ASSEMBLY	A-LF-297D-2	N/A	N/A
F		FILTER SEAL KIT ASSEMBLY (1 PER FILTER)			
		FILTER SEAL KIT BUNA "N"	A-LF-2928	A-LF-2928	A-LF-2928
		FILTER SEAL KIT E.P.R.	A-LF-2928B	A-LF-2928B	A-LF-2928B
		FILTER SEAL KIT VITON	A-LF-2928V	A-LF-2928V	A-LF-2928V
G		MAGNET ASSEMBLY			
		MAGNET ASSEMBLY FOR 1K N/S	A-LF-1592	A-LF-1592	A-LF-1592
		MAGNET ASSEMBLY FOR 2K N/S	A-LF-1593	A-LF-1593	A-LF-1593
		MAGNET ASSEMBLY FOR 3K N/S	A-LF-1594	A-LF-1594	A-LF-1594
H		MANIFOLD BLOCK ASSEMBLY (1 PER FILTER)			
		MANIFOLD BLOCK ASSEMBLY (1 PER FILTER)	A-LF-2007	A-LF-2007	A-LF-2007
A	1	BLOCK ASSEMBLY COMPONENT PARTS			
A-1	1	KF50-0 SUB-PLATE PORT	LF-1387-1	LF-2584	LF-2584
		KF50-0-D SUB-PLATE PORT	LF-1387-1	LF-1387-1	LF-1387-1
		KF50-0-MS SUB-PLATE PORT	LF-2204	LF-2204	LF-3204
A-2	1	DIRT ALARM, NO ELEMENT INDICATOR (N)	A-LF-2945	A-LF-2945	A-LF-2945
		DIRT ALARM MECHANICAL CARTRIDGE (D5)	N/A	D5-30	D5-40
		DIRT ALARM ELECTRICAL CARTRIDGE N/S (MS5)	N/A	A-LF-2548AC	A-LF-2548AC/DC-40
		DIRT ALARM VISUAL POINTER (D)	A-LF-283CP-1	N/A	A-LF-283CP-1
		DIRT ALARM ELECTRICAL CAM. OPER.(SEE NOTE 6)(MS)	LF-376	N/A	LF-376
A-3	1	BYPASS VALVE AND LINKAGE ASSEMBLY	A-LF-1389	N/A	A-LF-1389-40
		BYPASS VALVE ASSEMBLY	A-LF-2091	A-LF-2434	A-LF-2434-40
A-4	1	PLUG	HS-81	HS-81	HS-81
A-5	2	PLUG (FOR SUB PLATE BLOCK ONLY)	LF-777	LF-777	LF-777
A-6	1	BUSHING	LF-571	LF-571	LF-571
A-7	1	BACKUP RING	LF-2112	LF-2112	LF-2112
A-8	2	"O" RING (FOR SUB-PLATE BLOCK ONLY)	LF-883	LF-883	LF-1015-90
A-9	1	"O" RING	LFT-105	LFT-105	LFT-105
A-10	1	PLUG ASSEMBLY (NO INDICATOR IN BLOCK)	LF-285	A-LF-2550	A-LF-2550

ITEM	QUAN.	PART DESCRIPTION	PART NUMBER		
			SERIE A	SERIES B	SERIES B
B	1	HOUSING PLUG ASSEMBLY COMPONENT PARTS			
B-1	1	PLUG ASSEMBLY, BLEED	A-LF-1744	A-LF-1744	A-LF-1744
B-2	1	CAP (WITHOUT INDICATOR IN CAP)	LF-6112	LF-6112	LF-6112
		CAP (WITH INDICATOR IN CAP)	N/A	LF-6113	LF-6113
B-3	1	"O" RING	LFT-105	LFT-105	LFT-105
B-4	1	BACKUP RING	LF-2112	LF-2112	LF-2112
C	1	ELEMENT ACCESSORY ASSEMBLY COMPONENT PARTS			
C-1	1	COMPRESSION SPRING (1K LENGTH ONLY)	LF-3236	LF-3236	LF-3236
		COMPRESSION SPRING (2K AND 3K LENGTH ONLY)	LF-3236	LF-3236	LF-3236
		COMPRESSION SPRING (INDICATOR IN CAP)	N/A	N/A	N/A
C-2	1	COMPRESSION SPRING PLATE	LF-582A-1	LF-582A-1	LF-582A-1
		COMPRESSION SPRING PLATE (INDICATOR IN CAP)	N/A	N/A	N/A
C-3	1	ELEMENT CONNECTOR 2K LENGTH ONLY	LF-1997	LF-1997	LF-1997
	2	ELEMENT CONNECTOR 3K LENGTH ONLY	LF-1997	LF-1997	LF-1997
H	1	MANIFOLD BLOCK ASSEMBLY COMPONENT PARTS			
H-1	1	MKF50 MANIFOLD BLOCK 250 N.P.T.F. PORT	LF-2010	LF-2010	LF-2010
H-2	4	PLUG	PT-376	PT-376	PT-376
H-3	8	CAP SCREW	04-1132	04-1132	04-1132
H-4	8	LOCK WASHER	LF-683	LF-683	LF-683

- NOTES:**
- * INDICATES NO INDICATOR
D INDICATES VISUAL INDICATOR
MS INDICATES ELECTRICAL SWITCH
N/A = NOT AVAILABLE
N/S = NOT SHOWN
 - COMPLETE BLOCK ASSEMBLY FOR SERIES "A" AND "B" FILTERS ARE INTERCHANGEABLE BUT NOT ALL OF THE SUB ASSEMBLY PARTS.
 - COMPLETE HOUSING PLUG ASSEMBLY FOR SERIES "ORIGINAL", "A" AND "B" ARE INTERCHANGEABLE BUT NOT ALL OF THE SUB ASSEMBLY PARTS.
 - BLOCK ASSEMBLIES INCLUDE "O" RINGS AND VALVE ASSEMBLY.
 - FILTER SEAL KIT ASSEMBLY INCLUDES ALL SOFT SEALS EXCEPT ELEMENT GROMMET.
 - LF-376 WHEN USED REQUIRES A-LF-831-1 KIT.
 - CONTACT FACTORY FOR SPECIAL "G" NUMBER FILTERS AND FOR NONSTANDARD BYPASS SETTINGS.
 - ELECTRICAL SWITCHES
A-LF-2548AC IS AN MS5 SWITCH DESIGNED FOR USE WITH AC APPLICATIONS.
A-LF-2548DC IS AN MS5 SWITCH DESIGNED FOR USE WITH DC APPLICATIONS.
A-LF-2548LC IS AN MS5 SWITCH DESIGNED FOR USE WITH LOW VOLTAGE APPLICATIONS.
REVIEW PRODUCT CATALOG OR CONTACT FACTORY FOR ENTIRE LINE OF SWITCHES AVAILABLE.
ELECTRICAL MAGNETIC CARTRIDGES INCLUDES ALL MS5, MS10, MS11, MS12, MS13, MS14 MODELS, COLLECTIVELY REFERRED TO AS THE "MS5AC/DC/LC FAMILY".

KFH50 FILTER SERIES LIST			
SERIES	DATE ISSUED	DATE IMPLEMENTED	DESCRIPTION
A	1-11-84	1-85	PISTON TYPE BYPASS AND POINTER TYPE DIRT ALARM DIFFERENT TUBE AND CAP MACHINING IDENTIFICATION MARKS
B	8-14-85	10-1-85	CARTRIDGE TYPE BYPASS AND MAGNETIC INDICATOR AND DOUBLE "O" RING PLUG FOR NON INDICATOR FILTER
C	11-4-99	6-1-00	CHANGED BYPASS FROM 30 PSI TO 40 PSI