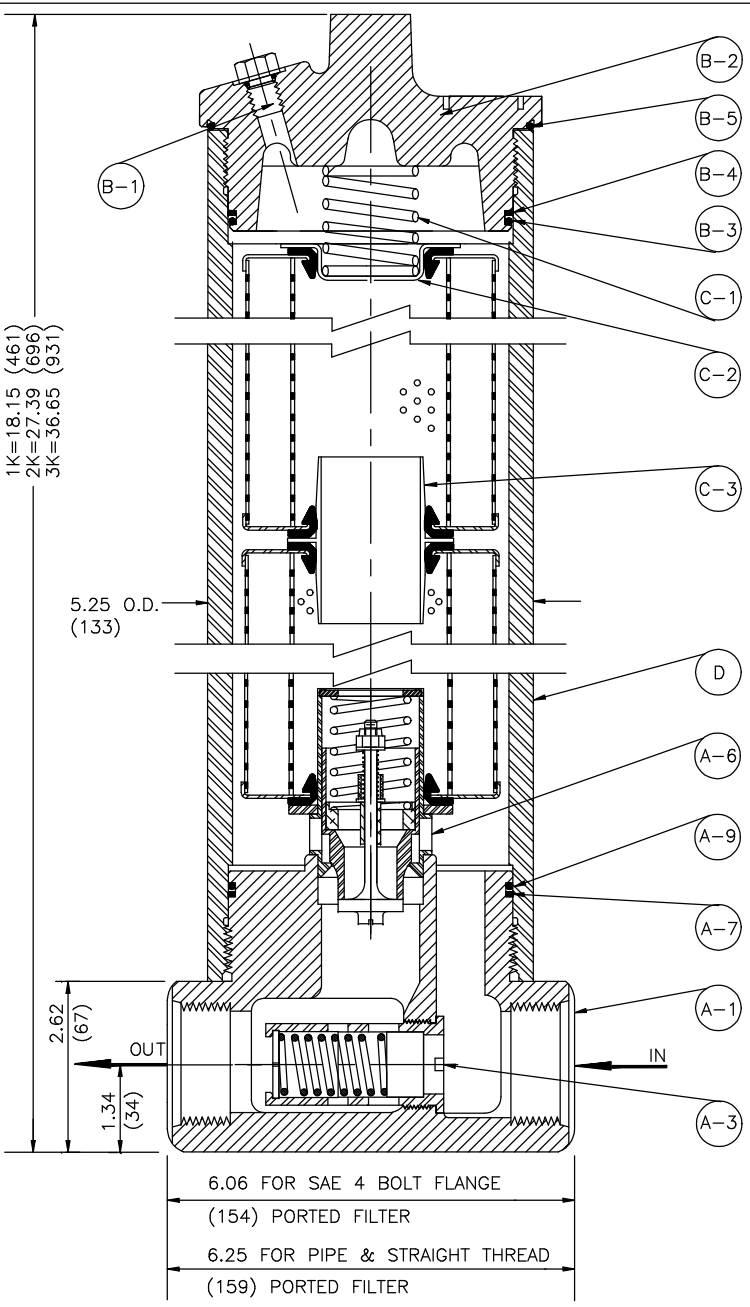
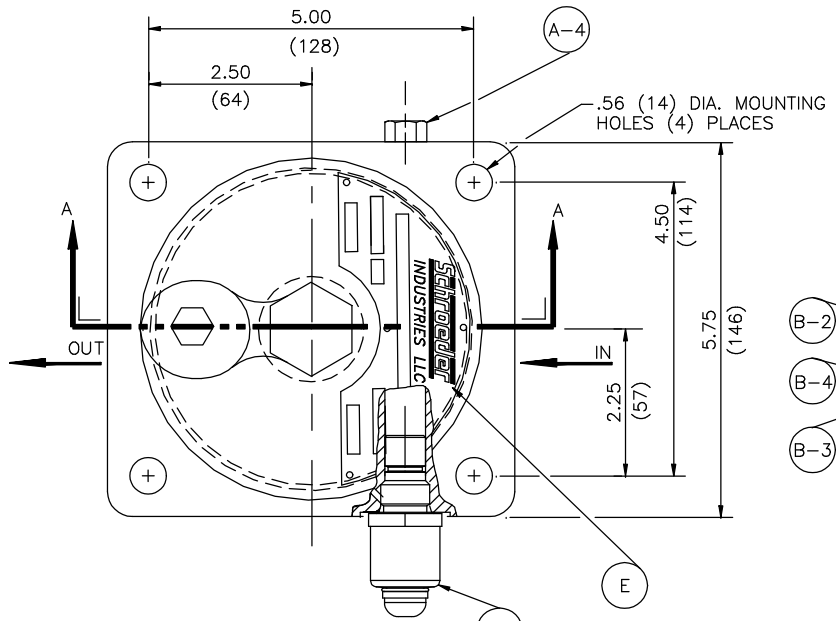


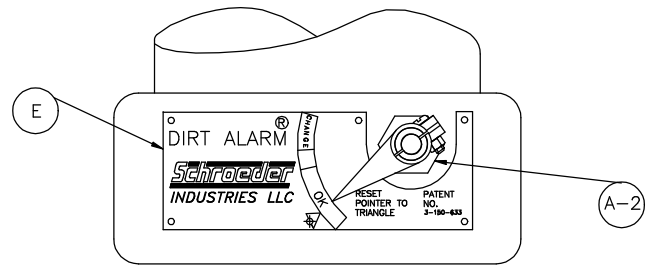
1K=18.15 (461)
 2K=27.39 (696)
 3K=36.65 (931)



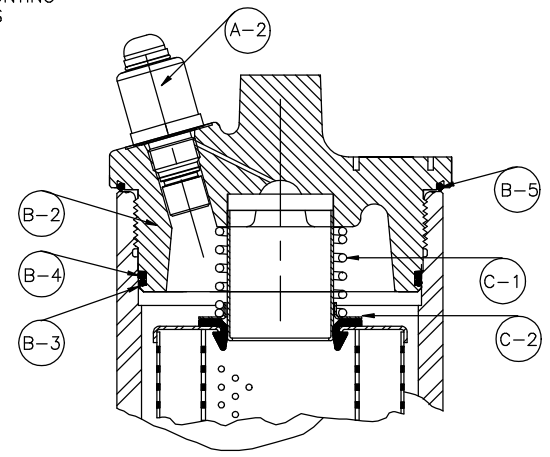
SECTION A-A



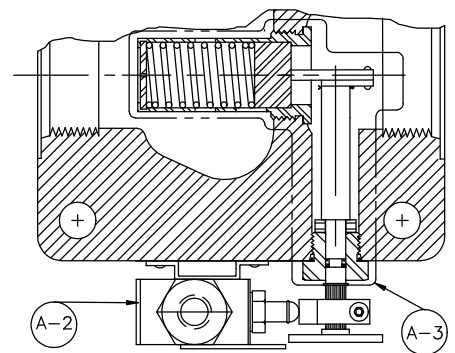
BLOCK LOCATION
 DIRT ALARM MECHANICAL CARTRIDGE
 SERIES: "B"
 DIRT ALARM ELECTRICAL CARTRIDGE
 MOUNTED IN SAME LOCATION



BLOCK LOCATION
 DIRT ALARM VISUAL POINTER
 SERIES: "ORIGINAL" AND "A"



CAP LOCATION
 DIRT ALARM MECHANICAL CARTRIDGE
 SERIES: "B"
 DIRT ALARM ELECTRICAL CARTRIDGE NOT
 AVAILABLE IN CAP FOR SOME VERSIONS



BLOCK LOCATION
 DIRT ALARM ELECTRICAL CAM OPERATED
 SERIES: ORIGINAL AND "A"

MATERIAL	DEC. TOLERANCES	APP.	REV. CARD: 7107
2 PL. ±	---	CHK. S. MITCHELL	2/24/88 REV. DATE: 4/1/2003
3 PL. ±	---	DWN. M. SCHMITT	11/25/87 B/M
ANG. ±	---	DISK NO.	P/N

PARTS LIST FOR KFH50
 FILTER



REV. 7 DRAWING NO. D-5685
 SCALE: FULL SHT. 1 OF 2

KFH50 PARTS LIST

ITEM	QUAN.	PART DESCRIPTION	PART NUMBER	
A	1	BLOCK ASSEMBLY	SERIES A	SERIES B
		KFH50-S * 1.88-12 STR. THD. PORT	N/A	A-LF-2653
		KFH50-P * 1.50 NPTF PORT	N/A	A-LF-2673
		KFH50-F * 1.50 SAE 4 BOLT FLANGE 6000 PSI	N/A	A-LF-6379
		KFH50-O * SUB-PLATE PORT	A-LF-2009	A-LF-2654
		KFH50-S-D OR D5 1.88-12 STR. THD. PORT	A-LF-1644	A-LF-2775
		KFH50-P-D OR D5 1.50 NPTF PORT	A-LF-1643	A-LF-2846
		KFH50-F-D OR D5 1.50 SAE 4 BOLT FLNG 6000 PSI	A-LF-1936	A-LF-2828
		KFH50-O-D OR D5 SUB-PLATE PORT	A-LF-3352	A-LF-4605
		KFH50-S-MS 1.88-12 STR. THD. PORT	A-LF-2336	N/A
		KFH50-P-MS 1.50 NPTF PORT	A-LF-2372	N/A
		KFH50-F-MS 1.50 SAE 4 BOLT FLANGE 6000 PSI	A-LF-2104	N/A
		KFH50-O-MS SUB-PLATE PORT	A-LF-5571	N/A
B	1	HOUSING PLUG ASSEMBLY		
		WITH NO INDICATOR IN CAP	A-LF-6114	A-LF-6114
		WITH VISUAL INDICATOR	N/A	A-LF-2537-40
C	1	ELEMENT ACCESSORY ASSEMBLY		
		(1) ELEMENT LENGTH	A-LF-982	A-LF-982
		(2) ELEMENT LENGTH	A-LF-992	A-LF-992
		(3) ELEMENT LENGTH	A-LF-994	A-LF-994
D	1	TUBE		
		(1) ELEMENT LENGTH	LF-2316	LF-2316
		(2) ELEMENT LENGTH	LF-2317	LF-2317
		(3) ELEMENT LENGTH	LF-2318	LF-2318
E	1	CAP NAMEPLATE AND STUD ASSEMBLY	LF-6109	LF-6109
		BLOCK NAMEPLATE AND STUD ASSEMBLY	A-LF-297E#	N/A
F	1	FILTER SEAL KIT ASSEMBLY		
		FILTER SEAL KIT BUNA "N"	A-LF-1850	A-LF-1850
		FILTER SEAL KIT E.P.R.	A-LF-1850B	A-LF-1850B
		FILTER SEAL KIT VITON	A-LF-1850V	A-LF-1850V
A	1	BLOCK ASSEMBLY COMPONENT PARTS		
A-1	1	KFH50-S * 1.88-12 STR. THD. PORT	N/A	LF-3405
		KFH50-P * 1.50 NPTF PORT	N/A	LF-3404
		KFH50-F * 1.50 SAE 4 BOLT FLANGE 6000 PSI	N/A	LF-3406
		KFH50-O * SUB-PLATE PORT	N/A	LF-3422
A-2	1	DIRT ALARM MECHANICAL CARTRIDGE (D5),(D7)	N/A	D5-40
		DIRT ALARM ELECTRICAL CARTRIDGE N/S (MS5)	N/A	SEE NOTE 8
		DIRT ALARM VISUAL POINTER (D)	A-LF-283CP-1	N/A
		DIRT ALARM ELECTRICAL CAM. OPER.(SEE NOTE 6)(MS)	LF-376	N/A
A-3	1	BYPASS VALVE AND LINKAGE ASSEMBLY	A-LF-1706	N/A
		BYPASS VALVE ASSEMBLY	A-LF-1855	A-LF-1855
A-4	1	PLUG	HS-81	HS-81
A-5	2	PLUG (FOR SUB PLATE BLOCK ONLY) N/S	LF-777	LF-777
A-6	1	TWO-WAY VALVE ASSEMBLY	A-LF-1924	A-LF-1924
A-7	1	BACKUP RING	LF-2112	LF-2112
A-8	2	"O" RING (FOR SUB-PLATE BLOCK ONLY) N/S	LF-883	LF-1015-90
A-9	1	"O" RING	LFT-105	LFT-105
A-10	1	PLUG ASSEMBLY (NO INDICATOR IN BLOCK) N/S	LF-285	A-LF-2550

ITEM	QUAN.	PART DESCRIPTION	PART NUMBER	
B	1	HOUSING PLUG ASSEMBLY COMPONENT PARTS	SERIES A	SERIES B
B-1	1	PLUG ASSEMBLY, BLEED	A-LF-1744	A-LF-1744
B-2	1	CAP (WITHOUT INDICATOR IN CAP)	LF-6112	LF-6112
		CAP (WITH INDICATOR IN CAP)	N/A	LF-6113
B-3	1	"O" RING	LFT-105	LFT-105
B-4	1	BACKUP RING	LF-2112	LF-2112
B-5	1	"O" RING	LF-6079	LF-6079
C	1	ELEMENT ACCESSORY ASSEMBLY COMPONENT PARTS		
C-1	1	COMPRESSION SPRING (NO INDICATOR IN CAP)	LF-3236	LF-3236
		COMPRESSION SPRING (INDICATOR IN CAP)	N/A	LF-2638
C-2	1	COMPRESSION SPRING PLATE	LF-582A-1	LF-582A-1
		COMPRESSION SPRING PLATE (INDICATOR IN CAP)	N/A	LF-2629
C-3	1	ELEMENT CONNECTOR 2K LENGTH ONLY	LF-1997	LF-1997
	2	ELEMENT CONNECTOR 3K LENGTH ONLY	LF-1997	LF-1997

- NOTES:**
- * INDICATES NO INDICATOR
 D INDICATES VISUAL INDICATOR
 D5 INDICATES RED POP UP VISUAL INDICATOR
 MS INDICATES ELECTRICAL SWITCH
N/A = NOT AVAILABLE
N/S = NOT SHOWN
 - COMPLETE BLOCK ASSEMBLY FOR SERIES "A" AND "B" FILTERS ARE INTERCHANGEABLE BUT NOT ALL OF THE SUB ASSEMBLY PARTS.
 - COMPLETE HOUSING PLUG ASSEMBLY FOR SERIES "ORIGINAL", "A" AND "B" ARE INTERCHANGEABLE BUT NOT ALL OF THE SUB ASSEMBLY PARTS.
 - BLOCK ASSEMBLIES INCLUDE "O" RINGS AND VALVE ASSEMBLY.
 - FILTER SEAL KIT ASSEMBLY INCLUDES ALL SOFT SEALS EXCEPT ELEMENT GROMMET.
 - LF-376 WHEN USED REQUIRES A-LF-831-1 KIT.
 - CONTACT FACTORY FOR SPECIAL "G" NUMBER FILTERS AND FOR NONSTANDARD BYPASS SETTINGS.
 - CONTACT FACTORY FOR AVAILABILITY OF VARIOUS ELECTRICAL DIRT ALARMS AND PART NUMBERS OR CONSULT SCHROEDER FILTRATION PRODUCTS CATALOG "SCHROEDER CARTRIDGE DIRT ALARMS" SECTION

KFH50 FILTER SERIES LIST			
SERIES	DATE ISSUED	DATE IMPLEMENTED	DESCRIPTION
A	1-11-84	1-85	PISTON TYPE BYPASS AND POINTER TYPE DIRT ALARM DIFFERENT TUBE AND CAP MACHINING IDENTIFICATION MARKS
B	8-14-85	10-1-85	CARTRIDGE TYPE BYPASS AND MAGNETIC INDICATOR AND DOUBLE "O" RING PLUG FOR NON INDICATOR FILTER

DISK NO. D-131

PARTS LIST FOR KFH50 FILTER

www.schroederindustries.com

REV. DRAWING NO.
7 D-5685
SCALE: FULL SHT. 2 OF 2