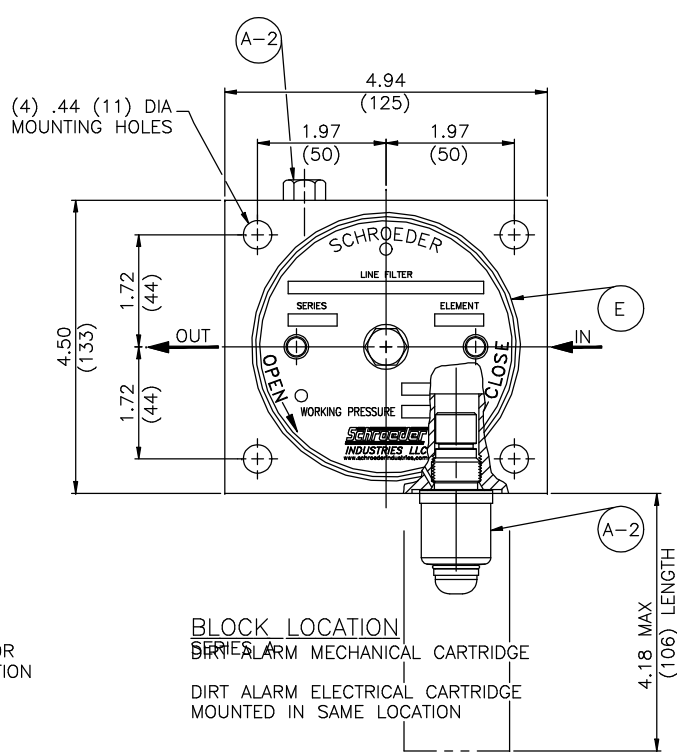
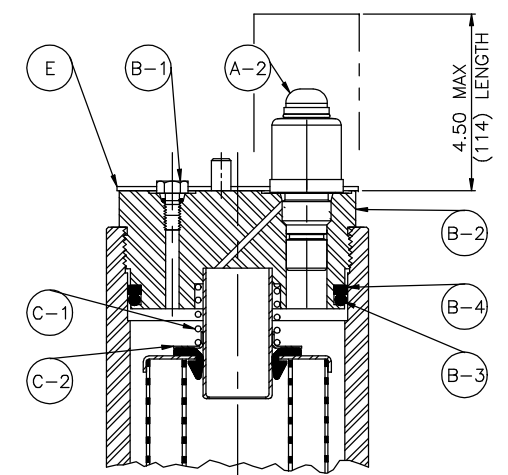


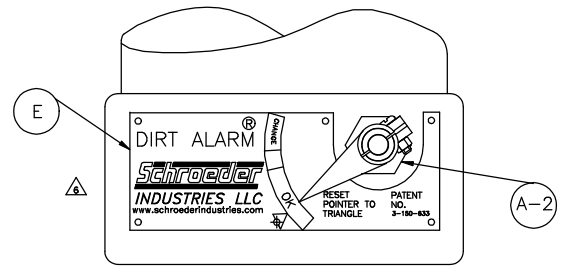
SECTION A-A



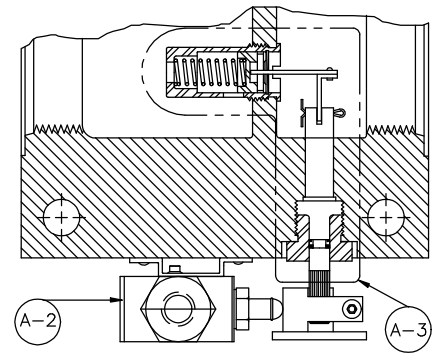
BLOCK LOCATION
DIRT ALARM MECHANICAL CARTRIDGE
DIRT ALARM ELECTRICAL CARTRIDGE
MOUNTED IN SAME LOCATION



CAP LOCATION
DIRT ALARM MECHANICAL CARTRIDGE
DIRT ALARM ELECTRICAL CARTRIDGE NOT
AVAILABLE IN CAP.



BLOCK LOCATION
DIRT ALARM VISUAL POINTER
SERIES ORIGINAL



BLOCK LOCATION
DIRT ALARM ELECTRICAL CAM OPERATED
SERIES ORIGINAL

MATERIAL	DEC. TOLERANCES	APP.	REV. CARD: 7741
2 PL. ±	---	CHK. S. MITCHELL	9/22/87
3 PL. ±	---	DWN. J. HENSCH	8/27/87
ANG. ±	---	DISK NO.	P/N

PARTS LIST FOR TF50 FILTER



REV.	DRAWING NO.
7	D-5612

SCALE: FULL SHT. 1 OF 2

TF50 PARTS LIST

ITEM	QUAN.	PART DESCRIPTION	PART NUMBER		
A	1	BLOCK ASSEMBLY	ORIGINAL	SERIES "A"	SERIES "B"
		TF50-S * 1.312-12 STR. THD. PORT	A-TF-576	A-TF-725	A-TF-725-40
		TF50-P * 1.00 NPTF PORT	A-TF-517	A-TF-726	A-TF-726-40
		TF50-F * 1.00 SAE 4 BOLT FLANGE 3000 PSI	A-TF-577	A-TF-727	A-TF-727-40
		TF50-O * SUB-PLATE PORT	N/A	A-TF-734	A-TF-734-40
		TF50-S-D5 1.312-12 STR. THD. PORT	A-TF-520	A-TF-728	A-TF-728-40
		TF50-P-D5 1.00 NPTF PORT	A-TF-518	A-TF-729	A-TF-729-40
		TF50-F-D5 1.00 SAE 4 BOLT FLANGE 3000 PSI	A-TF-522	A-TF-730	A-TF-730-40
		TF50-O-D5 SUB-PLATE PORT	A-TF-525	A-TF-735	A-TF-735-40
		TF50-S-MS5 1.312-12 STR. THD. PORT	A-TF-521	A-TF-731	A-TF-731-40
		TF50-P-MS5 1.00 NPTF PORT	A-TF-519	A-TF-732	A-TF-732-40
		TF50-F-MS5 1.00 SAE 4 BOLT FLANGE 3000 PSI	A-TF-523	A-TF-733	A-TF-733-40
		TF50-O-MS5 SUB-PLATE PORT	A-TF-526	A-TF-736	A-TF-736-40
B	1	HOUSING PLUG ASSEMBLY			
		WITH NO INDICATOR IN CAP	A-TF-304	A-TF-304	A-TF-304
		WITH VISUAL INDICATOR IN CAP	N/A	A-TF-737	A-TF-737
C	1	ELEMENT ACCESSORY ASSEMBLY			
		(1) ELEMENT LENGTH	A-TF-390	A-TF-390	A-TF-390
		(2) ELEMENT LENGTH	A-TF-391	A-TF-391	A-TF-391
D	1	TUBE			
		(1) ELEMENT LENGTH	TF-101	TF-101	TF-101
		(2) ELEMENT LENGTH	TF-102	TF-102	TF-102
E	1	CAP NAMEPLATE AND STUD ASSEMBLY	A-TF-109R	A-TF-109R	A-TF-109R
		CAP NAMEPLATE ASSEMBLY (WITH MAGNETIC INDICATOR)	A-TF-760	A-TF-760	A-TF-760
		BLOCK NAMEPLATE AND STUD ASSEMBLY	A-TF-25	A-TF-25	A-TF-25
F	1	FILTER SEAL KIT ASSEMBLY			
		FILTER SEAL KIT (BUNA-N)	A-TF-578	A-TF-738	A-TF-738
		FILTER SEAL KIT (E.P.R.)	A-TF-578B	A-TF-738B	A-TF-738B
		FILTER SEAL KIT (VITON)	A-TF-578V	A-TF-738V	A-TF-738V
G	1	MAGNET ASSEMBLY			
		MAGNET ASSEMBLY FOR 1A N/S	A-TF-301-1	A-TF-301-1	A-TF-301-1
		MAGNET ASSEMBLY FOR 2A N/S	A-TF-302-1	A-TF-302-1	A-TF-302-1
A	1	BLOCK ASSEMBLY COMPONENT PARTS			
A-1	1	TF50-S 1.312-12 STR. THD. PORT	TF-9R-1	TF-752	TF-752
		TF50-P 1.00 NPTF PORT	TF-108R-1	TF-751	TF-751
		TF50-F 1.00 SAE 4 BOLT FLANGE 3000 PSI	TF-233-1	TF-753	TF-753
		TF50-O SUB-PLATE PORT	N/A	TF-754	TF-754
A-2	1	DIRT ALARM, NO ELEMENT INDICATOR	A-TF-876	A-TF-876	A-TF-876
		DIRT ALARM MECHANICAL CARTRIDGE (D7)(D5)	N/A	D5-30	D5-40
		DIRT ALARM ELECTRICAL CARTRIDGE N/S (MS5)	N/A	A-LF-2548AC	A-LF-2548AC/DC-40
		DIRT ALARM VISUAL POINTER (D)	A-LF-283CP-1	N/A	N/A
		DIRT ALARM ELECTRICAL CAM OPER. (SEE NOTE 6) (MS)	LF-376	N/A	N/A
A-3	1	BYPASS VALVE AND LINKAGE ASSEMBLY	A-TF-494	N/A	A-TF-494-40
		BYPASS VALVE ASSEMBLY	A-TF-504	A-LF-2427	A-LF-2427-40
A-4	1	PLUG	HS-81	HS-81	HS-81
A-5	2	PLUG (FOR SUB PLATE BLOCK ONLY) N/S	IFS-19	IFS-19	IFS-19
A-6	1	BUSHING	TF-241	TF-241	TF-241
A-7	1	BACKUP RING	TF-203	TF-203	TF-203
A-8	2	"O" RING (FOR SUB PLATE BLOCK ONLY) N/S	DF-225-90	DF-225-90	DF-225-90
A-9	1	"O" RING	TF-18PC	TF-18PC	TF-18PC
A-10	1	PLUG ASSEMBLY (NO INDICATOR IN BLOCK) N/S	LF-285	A-LF-2550	A-LF-2550

ITEM	QUAN.	PART DESCRIPTION	PART NUMBER		
B	1	HOUSING PLUG ASSEMBLY COMPONENT	ORIGINAL	SERIES "A"	SERIES "B"
B-1	1	PLUG ASSEMBLY BLEED	A-LF-1744	A-LF-1744	A-LF-1744
B-2	1	CAP (WITHOUT INDICATOR IN CAP)	TF-11Q	TF-11Q	TF-11Q
	1	CAP (WITH INDICATOR IN CAP)	N/A	TF-774	TF-774
B-3	1	"O" RING	TF-18PC	TF-18PC	TF-18PC
B-4	1	BACKUP RING	TF-203	TF-203	TF-203
C	1	ELEMENT ACCESSORY ASSEMBLY COMPONENT PARTS			
C-1	1	COMPRESSION SPRING (1A AND 2A LENGTH)	TF-499	TF-499	TF-499
		COMPRESSION SPRING (INDICATOR IN CAP)	N/A	TF-758	TF-758
C-2	1	COMPRESSION SPRING PLATE	TF-251-1	TF-251-1	TF-251-1
		COMPRESSION SPRING PLATE (INDICATOR IN CAP)	N/A	TF-759	TF-759
C-3	1	ELEMENT CONNECTOR (2K LENGTH ONLY)	TF-242P	TF-242P	TF-242P

N/A = NOT AVAILABLE

N/S = NOT SHOWN

NOTES:

- 1.) * INDICATES NO INDICATOR
D INDICATES VISUAL INDICATOR
MS INDICATES ELECTRIC SWITCH
- 2.) COMPLETE BLOCK ASSEMBLY FOR SERIES ORIGINAL AND "A" FILTERS ARE INTERCHANGEABLE BUT NOT ALL OF THE SUB-ASSEMBLY PARTS.
- 3.) COMPLETE HOUSING PLUG ASSEMBLY FOR SERIES ORIGINAL AND "A" ARE INTERCHANEABLE BUT NOT ALL OF THE SUB-ASSEMBLY PARTS.
- 4.) BLOCK ASSEMBLIES INCLUDE "O" RINGS AND VALVE ASSEMBLY.
- 5.) FILTER SEAL KIT ASSEMBLY INCLUDES ALL SOFT SEALS EXCEPT ELEMENT GROMMET.
- 6.) LF-376 WHEN USED REQUIRES A-LF-831-1 KIT.
- 7.) CONTACT FACTORY FOR SPECIAL "G" NUMBER FILTERS AND FOR NON STANDARD BYPASS SETTINGS.
- 8.) ELECTRICAL SWITCHES
A-LF-2548AC-40 IS AN MS5 SWITCH DESIGNED FOR USE WITH AC APPLICATIONS.
A-LF-2548DC-40 IS AN MS5 SWITCH DESIGNED FOR USE WITH DC APPLICATIONS.
A-LF-2548LC-40 IS AN MS5 SWITCH DESIGNED FOR USE WITH LOW VOLTAGE APPLICATIONS.
REVIEW PRODUCT CATALOG OR CONTACT FACTORY FOR ENTIRE LINE OF SWITCHES AVAILABLE.
ELECTRICAL MAGNETIC CARTRIDGES INCLUDES ALL MS5, MS10, MS11, MS12, MS13, MS14 MODELS, COLLECTIVELY REFERRED TO AS THE "MS5AC/DC/LC/ FAMILY".
- D5 DIRT ALARM MECHANICAL CARTRIDGE MOUNTED IN BLOCK.
D7 DIRT ALARM MECHANICAL CARTRIDGE MOUNTED IN CAP.

TF50 FILTER SERIES LIST			
SERIES	DATE ISSUED	DATE IMPLEMENTED	DESCRIPTION
ORIGINAL			PISTON TYPE BYPASS AND POINTER TYPE DIRT ALARM
A	8-14-85	10-1-85	CARTRIDGE TYPE BYPASS AND MAGNETIC INDICATOR AND DOUBLE "O" RING PLUG FOR NON INDICATOR FILTER
B	11-4-99	6-1-00	CHANGED BYPASS FROM 30 PSI TO 40 PSI

PARTS LIST FOR
TF50 FILTER



REV. DRAWING NO.
7 D-5612
SCALE: FULL SHT. 2 OF 2