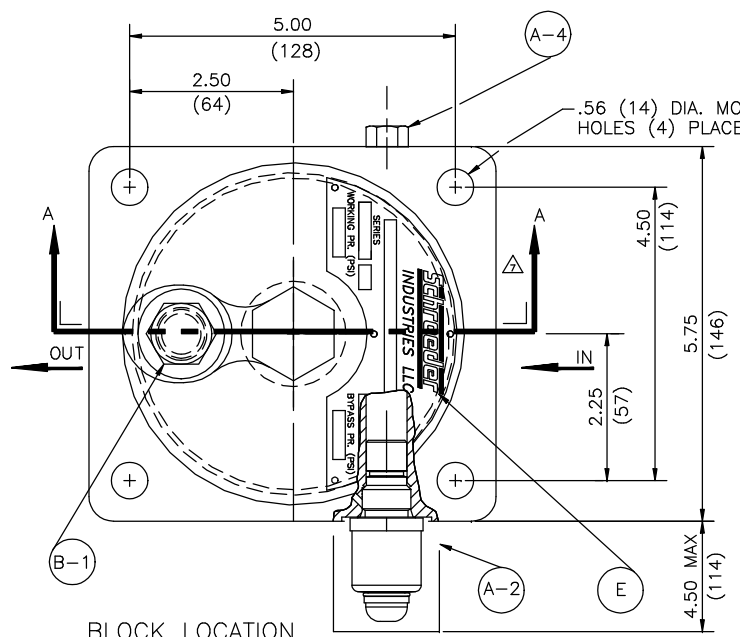
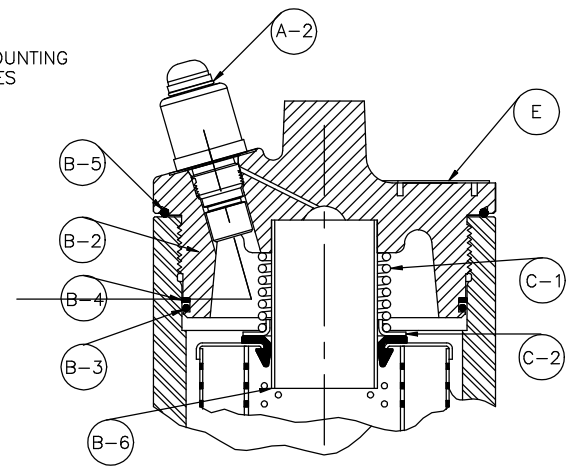


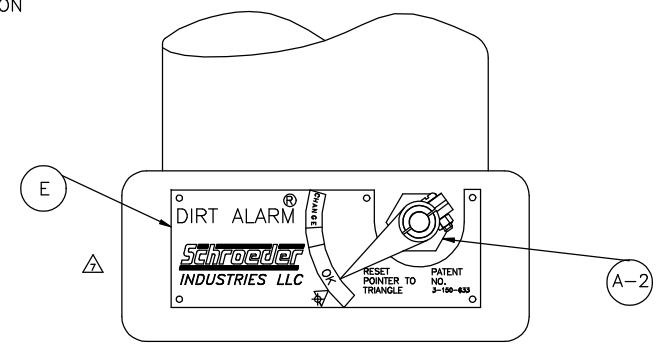
SECTION AA



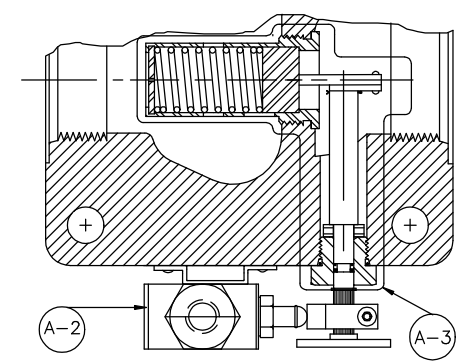
**BLOCK LOCATION**  
DIRT ALARM MECHANICAL CARTRIDGE (D5)  
SERIES: "B" AND "C"  
DIRT ALARM ELECTRICAL CARTRIDGE  
MOUNTED IN SAME LOCATION



**CAP LOCATION**  
DIRT ALARM MECHANICAL CARTRIDGE (D5C)  
SERIES: "B" AND "C"  
DIRT ALARM ELECTRICAL CARTRIDGE NOT  
AVAILABLE IN CAP.



**BLOCK LOCATION**  
DIRT ALARM VISUAL POINTER (D)  
SERIES: "ORIGINAL" AND "A"



**BLOCK LOCATION**  
DIRT ALARM ELECTRICAL CAM OPERATED (MS)  
SERIES: ORIGINAL AND "A"

MATERIAL	DEC. TOLERANCES	APP.	REV. CARD: 7105
2 PL. ±	---	CHK. S. MITCHELL 9/26/87	REV. DATE: 10/6/08
3 PL. ±	---	DWN. M. SCHMITT 8/4/87	B/M
ANG. ±	---	DISK NO.	P/N

PARTS LIST FOR KF50 FILTER



REV.	DRAWING NO.
9	D-5609

SCALE: FULL SHT. 1 OF 2

# KF50 PARTS LIST

ITEM	QUAN.	PART DESCRIPTION	PART NUMBER			
			ORIGINAL	SERIES A	SERIES B	SERIES C
A	1	BLOCK ASSEMBLY				
		KF50-S * 1.88-12 STR. THD. PORT	N/A	N/A	A-LF-2523	A-LF-2523-40
		KF50-P * 1.50 NPTF PORT	A-LF-1611	A-LF-1611	A-LF-2524	A-LF-2524-40
		KF50-F * 1.50 SAE 4 BOLT FLANGE 6000 PSI	N/A	N/A	A-LF-2526	A-LF-2526-40
		KF50-O * SUB-PLATE PORT	A-LF-1619	A-LF-1619	A-LF-2655	A-LF-2655-40
		KF50-S-D OR D5 1.88-12 STR. THD. PORT	A-LF-1578	A-LF-1578	A-LF-2527	A-LF-2527-40
		KF50-P-D OR D5 1.50 NPTF PORT	A-LF-1602	A-LF-1602	A-LF-2528	A-LF-2528-40
		KF50-F-D OR D5 1.50 SAE 4 BOLT FLNG 6000 PSI	A-LF-1702	A-LF-1702	A-LF-2530	A-LF-3590-40
		KF50-O-D OR D5 SUB-PLATE PORT	A-LF-1587	A-LF-1587	A-LF-2535	A-LF-2535-40
		KF50-S-MS 1.88-12 STR. THD. PORT	A-LF-1612	A-LF-1612	N/S	N/S
		KF50-P-MS 1.50 NPTF PORT	A-LF-1418	A-LF-1418	N/S	N/S
		KF50-F-MS 1.50 SAE 4 BOLT FLANGE 6000 PSI	A-LF-1700	A-LF-1700	N/S	N/S
		KF50-O-MS SUB-PLATE PORT	A-LF-1701	A-LF-1701	N/S	N/S
B	1	HOUSING PLUG ASSEMBLY				
		WITH NO INDICATOR IN CAP	A-LF-1460	A-LF-2312	A-LF-2312	A-LF-6114
		WITH VISUAL INDICATOR	N/A	N/A	A-LF-2537	A-LF-2537-40
C	1	ELEMENT ACCESSORY ASSEMBLY				
		(1) ELEMENT LENGTH	A-LF-982	A-LF-982	A-LF-982	A-LF-982
		(2) ELEMENT LENGTH	A-LF-992	A-LF-992	A-LF-992	A-LF-992
		(3) ELEMENT LENGTH	A-LF-994	A-LF-994	A-LF-994	A-LF-994
D	1	TUBE				
		(1) ELEMENT LENGTH	LF-1300	LF-2285	LF-2285	LF-2285
		(2) ELEMENT LENGTH	LF-1301	LF-2286	LF-2286	LF-2286
		(3) ELEMENT LENGTH	LF-1302	LF-2287	LF-2287	LF-2287
E	1	CAP NAMEPLATE AND STUD ASSEMBLY	LF-1453	LF-1453	A-LF-2844	LF-6109
		BLOCK NAMEPLATE AND STUD ASSEMBLY	A-LF-297E#	A-LF-297E#	N/A	A-LF-297E#
F	1	FILTER SEAL KIT ASSEMBLY				
		FILTER SEAL KIT BUNA "N"	A-LF-1850	A-LF-1850	A-LF-1850	A-LF-1850
		FILTER SEAL KIT E.P.R.	A-LF-1850B	A-LF-1850B	A-LF-1850B	A-LF-1850B
		FILTER SEAL KIT VITON	A-LF-1850V	A-LF-1850V	A-LF-1850V	A-LF-1850V
G	1	MAGNET ASSEMBLY				
		MAGNET ASSEMBLY FOR 1K	N/S	A-LF-1592	A-LF-1592	A-LF-1592
		MAGNET ASSEMBLY FOR 2K	N/S	A-LF-1593	A-LF-1593	A-LF-1593
		MAGNET ASSEMBLY FOR 3K	N/S	A-LF-1594	A-LF-1594	A-LF-1594
A	1	BLOCK ASSEMBLY COMPONENT PARTS				
A-1	1	KF50-S * 1.88-12 STR. THD. PORT	LF-1241-1	LF-1241-1	LF-2581	LF-2581
		KF50-P * 1.50 NPTF PORT	LF-1240-1	LF-1240-1	LF-2580	LF-2580
		KF50-F * 1.50 SAE 4 BOLT FLANGE 6000 PSI	LF-1327-1	LF-1327-1	LF-2583	LF-2583
		KF50-O * SUB-PLATE PORT	LF-1387-1	LF-1387-1	LF-2584	LF-2584
A-2	1	DIRT ALARM, NO ELEMENT INDICATOR (N)	N/A	A-LF-2945	A-LF-2945	A-LF-2945
		DIRT ALARM MECHANICAL CARTRIDGE (D5),(D5C)	N/A	N/A	D5-30	D5-40
		DIRT ALARM ELECTRICAL CARTRIDGE N/S	N/A	N/A	SEE NOTE 9	SEE NOTE 9
		DIRT ALARM VISUAL POINTER (D)	A-LF-283CP-1	A-LF-283CP-1	N/A	A-LF-283CP-1
		DIRT ALARM ELEC. CAM. OPER.(SEE NOTE 6)(MS)	LF-376	LF-376	N/A	LF-376
A-3	1	BYPASS VALVE AND LINKAGE ASSEMBLY	A-LF-1389	A-LF-1389	N/A	A-LF-1389-40
		BYPASS VALVE ASSEMBLY	A-LF-2091	A-LF-2091	A-LF-2434-30	A-LF-2434-40
A-4	1	PLUG	HS-81	HS-81	HS-81	HS-81
A-5	2	PLUG (FOR SUB PLATE BLOCK ONLY)	N/S	LF-777	LF-777	LF-777
A-6	1	BUSHING	LF-571	LF-571	LF-571	LF-571
A-7	1	BACKUP RING	LF-2112	LF-2112	LF-2112	LF-2112
A-8	2	"O" RING (FOR SUB-PLATE BLOCK ONLY)	N/S	LF-883	LF-1015-90	LF-1015-90
A-9	1	"O" RING	LFT-105	LFT-105	LFT-105	LFT-105
A-10	1	PLUG ASSEMBLY (NO INDICATOR IN BLOCK)	N/S	LF-285	LF-285	A-LF-2550

ITEM	QUAN.	PART DESCRIPTION	PART NUMBER			
			ORIGINAL	SERIES A	SERIES B	SERIES C
B	1	HOUSING PLUG ASSEMBLY COMPONENT PARTS				
B-1	1	PLUG ASSEMBLY, BLEED	A-LF-1744	A-LF-1744	A-LF-1744	A-LF-1744
B-2	1	CAP (WITHOUT INDICATOR IN CAP)	LF-1437	LF-2281	LF-2281	LF-6112
		CAP (WITH INDICATOR IN CAP)	N/A	N/A	LF-6113	LF-6113
B-3	1	"O" RING	LFT-105	LFT-105	LFT-105	LFT-105
B-4	1	BACKUP RING	LF-2112	LF-2112	LF-2112	LF-2112
B-5	1	"O" RING	N/A	N/A	N/A	LF-6079
B-6	1	BUSHING (INDICATOR IN CAP)	N/A	N/A	LF-2640	LF-2640
C	1	ELEMENT ACCESSORY ASSEMBLY COMPONENT PARTS				
C-1	1	COMPRESSION SPRING (1K LENGTH ONLY)	LF-3236	LF-3236	LF-3236	LF-3236
		COMPRESSION SPRING (2K AND 3K LENGTH ONLY)	LF-3236	LF-3236	LF-3236	LF-3236
		COMPRESSION SPRING (INDICATOR IN CAP)	N/A	N/A	LF-2638	LF-2638
C-2	1	COMPRESSION SPRING PLATE	LF-582A-1	LF-582A-1	LF-582A-1	LF-582A-1
		COMPRESSION SPRING PLATE (INDICATOR IN CAP)	N/A	N/A	LF-2629	LF-2629
C-3	1	ELEMENT CONNECTOR 2K LENGTH ONLY	LF-1997	LF-1997	LF-1997	LF-1997
		ELEMENT CONNECTOR 3K LENGTH ONLY	LF-1997	LF-1997	LF-1997	LF-1997

- NOTES:**
- \* INDICATES NO INDICATOR  
D INDICATES VISUAL INDICATOR  
D5 INDICATES RED POP-UP VISUAL INDICATOR  
MS INDICATES CAM OPERATED ELECTRICAL SWITCH  
N/A = NOT AVAILABLE  
N/S = NOT SHOWN
  - COMPLETE BLOCK ASSEMBLY FOR SERIES "A", "B" FILTERS ARE INTERCHANGEABLE BUT NOT ALL OF THE SUB ASSEMBLY PARTS.
  - COMPLETE HOUSING PLUG ASSEMBLY FOR SERIES "ORIGINAL", "A", "B" ARE INTERCHANGEABLE BUT NOT ALL OF THE SUB ASSEMBLY PARTS.
  - BLOCK ASSEMBLIES INCLUDE "O" RINGS AND BYPASS VALVE ASSEMBLY.
  - FILTER SEAL KIT ASSEMBLY INCLUDES ALL SOFT SEALS EXCEPT ELEMENT GROMMET.
  - LF-376 WHEN USED REQUIRES A-LF-831-1 KIT.
  - CONTACT FACTORY FOR SPECIAL "G" NUMBER FILTERS AND FOR NONSTANDARD BYPASS SETTINGS.
  - FOR 2" PORTED KF50 SEE DWG #D-6025.
  - CONTACT FACTORY FOR AVAILABILITY OF VARIOUS ELECTRICAL DIRT ALARMS AND PART NUMBERS OR CONSULT SCHROEDER FILTRATION PRODUCTS CATALOG "SCHROEDER CARTRIDGE DIRT ALARMS" SECTION

KF50 FILTER SERIES LIST			
SERIES	DATE ISSUED	DATE IMPLEMENTED	DESCRIPTION
ORIGINAL			PISTON TYPE BYPASS AND POINTER TYPE DIRT ALARM
A	1-11-84	1-85	PISTON TYPE BYPASS AND POINTER TYPE DIRT ALARM DIFFERENT TUBE AND CAP MACHINING IDENTIFICATION MARKS
B	8-14-85	10-1-85	CARTRIDGE TYPE BYPASS AND MAGNETIC INDICATOR AND DOUBLE "O" RING PLUG FOR NON INDICATOR FILTER
C	1-25-00	1-25-01	STANDARD BYPASS SETTING INCREASED TO 40 PSI.