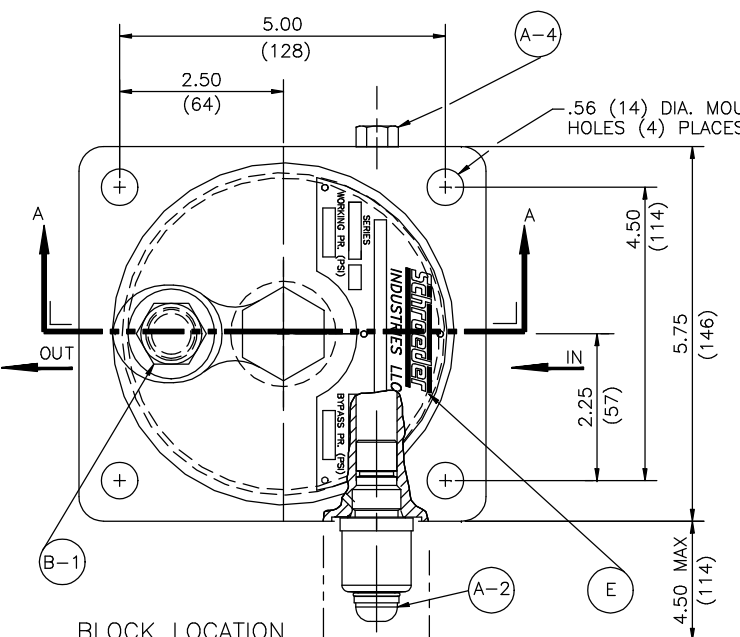
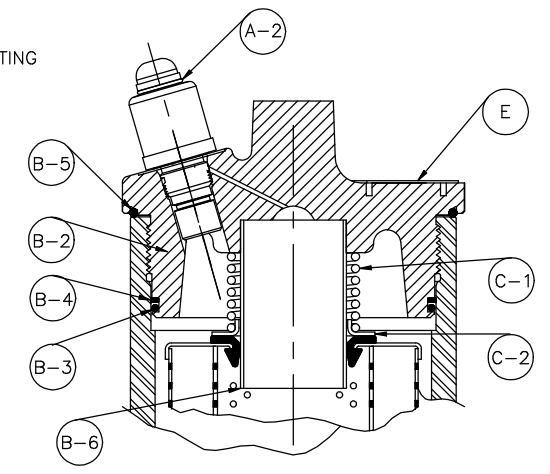


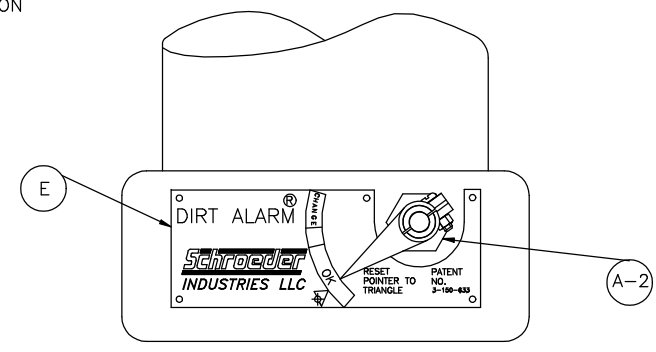
SECTION AA



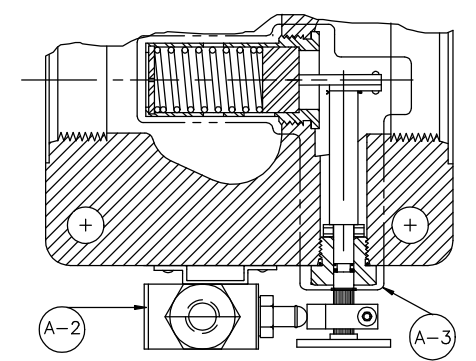
BLOCK LOCATION
DIRT ALARM MECHANICAL CARTRIDGE (D5)
SERIES: "B" AND "C"
DIRT ALARM ELECTRICAL CARTRIDGE MOUNTED IN SAME LOCATION



CAP LOCATION
DIRT ALARM MECHANICAL CARTRIDGE (D5C)
SERIES: "B" AND "C"
DIRT ALARM ELECTRICAL CARTRIDGE NOT AVAILABLE IN CAP.



BLOCK LOCATION
DIRT ALARM VISUAL POINTER (D)
SERIES: "ORIGINAL" AND "A"



BLOCK LOCATION
DIRT ALARM ELECTRICAL CAM OPERATED (MS)
SERIES: ORIGINAL AND "A"

MATERIAL	DEC. TOLERANCES	APP.	REV. CARD: 6829
2 PL. ± --	CHK.		REV. DATE: 10/3/08
3 PL. ± --	DWN	D. J. W. 1-8-97	B/M
ANG. ± --	DISK NO.		P/N

PARTS LIST FOR KF30 FILTER



REV.	DRAWING NO.
12	D-5590
SCALE: FULL SHT. 1 OF 2	

KF30 PARTS LIST

ITEM	QUAN.	PART DESCRIPTION	PART NUMBER			
			ORIGINAL	SERIES A	SERIES B	SERIES C
A	1	BLOCK ASSEMBLY				
		KF30-S * 1.88-12 STR. THD. PORT	N/A	N/A	A-LF-2523	A-LF-2523-40
		KF30-P * 1.50 NPTF PORT	A-LF-1611	A-LF-1611	A-LF-2524	A-LF-2524-40
		KF30-F * 1.50 SAE 4 BOLT FLANGE 3000 PSI	N/A	N/A	A-LF-2525	A-LF-2525-40
		KF30-O * SUB-PLATE PORT	A-LF-1619	A-LF-1619	A-LF-2655	A-LF-2655-40
		KF30-S-D OR D5 1.88-12 STR. THD. PORT	A-LF-1578	A-LF-1578	A-LF-2527	A-LF-2527-40
		KF30-P-D OR D5 1.50 NPTF PORT	A-LF-1602	A-LF-1602	A-LF-2528	A-LF-2528-40
		KF30-F-D OR D5 1.50 SAE 4 BOLT FLNG 3000 PSI	A-LF-1604	A-LF-1604	A-LF-2529	A-LF-2529-40
		KF30-O-D OR D5 SUB-PLATE PORT	A-LF-1587	A-LF-1587	A-LF-2535	A-LF-2535-40
		KF30-S-MS 1.88-12 STR. THD. PORT	A-LF-1612	A-LF-1612	N/S	N/S
		KF30-P-MS 1.50 NPTF PORT	A-LF-1418	A-LF-1418	N/S	N/S
		KF30-F-MS 1.50 SAE 4 BOLT FLANGE 3000 PSI	A-LF-1709	A-LF-1709	N/S	N/S
		KF30-O-MS SUB-PLATE PORT	A-LF-1701	A-LF-1701	N/S	N/S
B	1	HOUSING PLUG ASSEMBLY				
		WITH NO INDICATOR IN CAP	A-LF-1460	A-LF-2312	A-LF-2312	A-LF-6114
		WITH VISUAL INDICATOR	N/A	N/A	A-LF-2537	A-LF-2537-40
C	1	ELEMENT ACCESSORY ASSEMBLY				
		(1) ELEMENT LENGTH	A-LF-982	A-LF-982	A-LF-982	A-LF-982
		(2) ELEMENT LENGTH	A-LF-992	A-LF-992	A-LF-992	A-LF-992
		(3) ELEMENT LENGTH	A-LF-994	A-LF-994	A-LF-994	A-LF-994
D	1	TUBE				
		(1) ELEMENT LENGTH	N/A	LF-2282	LF-2282	LF-2282
		(2) ELEMENT LENGTH	N/A	LF-2283	LF-2283	LF-2283
		(3) ELEMENT LENGTH	N/A	LF-2284	LF-2284	LF-2284
E	1	CAP NAMEPLATE AND STUD ASSEMBLY	LF-1453	LF-1453	A-LF-2844	LF-6109
		BLOCK NAMEPLATE AND STUD ASSEMBLY	A-LF-297E#	A-LF-297E#	N/A	A-LF-297E#
F	1	FILTER SEAL KIT ASSEMBLY				
		FILTER SEAL KIT BUNA "N"	A-LF-1850	A-LF-1850	A-LF-1850	A-LF-1850
		FILTER SEAL KIT E.P.R.	A-LF-1850B	A-LF-1850B	A-LF-1850B	A-LF-1850B
		FILTER SEAL KIT VITON	A-LF-1850V	A-LF-1850V	A-LF-1850V	A-LF-1850V
G	1	MAGNET ASSEMBLY				
		MAGNET ASSEMBLY FOR 1K	N/S	A-LF-1592	A-LF-1592	A-LF-1592
		MAGNET ASSEMBLY FOR 2K	N/S	A-LF-1593	A-LF-1593	A-LF-1593
		MAGNET ASSEMBLY FOR 3K	N/S	A-LF-1594	A-LF-1594	A-LF-1594
A	1	BLOCK ASSEMBLY COMPONENT PARTS				
A-1	1	KF30-S * 1.88-12 STR. THD. PORT	LF-1241-1	LF-1241-1	LF-2581	LF-2581
		KF30-P * 1.50 NPTF PORT	LF-1240-1	LF-1240-1	LF-2580	LF-2580
		KF30-F * 1.50 SAE 4 BOLT FLANGE 3000 PSI	N/A	N/A	LF-2582	LF-2582
		KF30-O * SUB-PLATE PORT	LF-1387-1	LF-1387-1	LF-2584	LF-2584
A-2	1	DIRT ALARM, NO ELEMENT INDICATOR (N)	N/A	A-LF-2945	A-LF-2945	A-LF-2945
		DIRT ALARM MECHANICAL CARTRIDGE (D5),(D5C)	N/A	N/A	D5-30	D5-40
		DIRT ALARM ELECTRICAL CARTRIDGE N/S	N/A	N/A	SEE NOTE 9	SEE NOTE 9
		DIRT ALARM VISUAL POINTER (D)	A-LF-283CP-1	A-LF-283CP-1	N/A	A-LF-283CP-1
		DIRT ALARM ELEC. CAM. OPER.(SEE NOTE 6)(MS)	LF-376	LF-376	N/A	LF-376
A-3	1	BYPASS VALVE AND LINKAGE ASSEMBLY	A-LF-1389	A-LF-1389	N/A	A-LF-1389-40
		BYPASS VALVE ASSEMBLY	A-LF-2091	A-LF-2091	A-LF-2434-30	A-LF-2434-40
A-4	1	PLUG	HS-81	HS-81	HS-81	HS-81
A-5	2	PLUG (FOR SUB PLATE BLOCK ONLY)	N/S	LF-777	LF-777	LF-777
A-6	1	BUSHING	LF-571	LF-571	LF-571	LF-571
A-7	1	BACKUP RING	LF-2112	LF-2112	LF-2112	LF-2112
A-8	2	"O" RING (FOR SUB-PLATE BLOCK ONLY)	N/S	LF-883	LF-1015-90	LF-1015-90
A-9	1	"O" RING	LFT-105	LFT-105	LFT-105	LFT-105
A-10	1	PLUG ASSEMBLY (NO INDICATOR IN BLOCK)	N/S	LF-285	LF-285	A-LF-2550

ITEM	QUAN.	PART DESCRIPTION	PART NUMBER			
			ORIGINAL	SERIES A	SERIES B	SERIES C
B	1	HOUSING PLUG ASSEMBLY COMPONENT PARTS				
B-1	1	PLUG ASSEMBLY, BLEED	A-LF-1744	A-LF-1744	A-LF-1744	A-LF-1744
B-2	1	CAP (WITHOUT INDICATOR IN CAP)	LF-1437	LF-2281	LF-2281	LF-6112
		CAP (WITH INDICATOR IN CAP)	N/A	N/A	LF-6113	LF-6113
B-3	1	"O" RING	LFT-105	LFT-105	LFT-105	LFT-105
B-4	1	BACKUP RING	LF-2112	LF-2112	LF-2112	LF-2112
B-5	1	"O" RING	N/A	N/A	N/A	LF-6079
B-6	1	BUSHING (INDICATOR IN CAP)	N/A	N/A	LF-2640	LF-2640
C	1	ELEMENT ACCESSORY ASSEMBLY COMPONENT PARTS				
C-1	1	COMPRESSION SPRING (1K LENGTH ONLY)	LF-3236	LF-3236	LF-3236	LF-3236
		COMPRESSION SPRING (2K AND 3K LENGTH ONLY)	LF-3236	LF-3236	LF-3236	LF-3236
		COMPRESSION SPRING (INDICATOR IN CAP)	N/A	N/A	LF-2638	LF-2638
C-2	1	COMPRESSION SPRING PLATE	LF-582A-1	LF-582A-1	LF-582A-1	LF-582A-1
		COMPRESSION SPRING PLATE (INDICATOR IN CAP)	N/A	N/A	LF-2629	LF-2629
C-3	1	ELEMENT CONNECTOR 2K LENGTH ONLY	LF-1997	LF-1997	LF-1997	LF-1997
		ELEMENT CONNECTOR 3K LENGTH ONLY	LF-1997	LF-1997	LF-1997	LF-1997

NOTES:

- 1) * INDICATES NO INDICATOR
D INDICATES VISUAL INDICATOR
D5 INDICATES RED POP-UP VISUAL INDICATOR
MS INDICATES CAM OPERATED ELECTRICAL SWITCH
- 2) COMPLETE BLOCK ASSEMBLY FOR SERIES "A", "B" FILTERS ARE INTERCHANGEABLE BUT NOT ALL OF THE SUB ASSEMBLY PARTS.
- 3) COMPLETE HOUSING PLUG ASSEMBLY FOR SERIES "ORIGINAL", "A", "B" ARE INTERCHANGEABLE BUT NOT ALL OF THE SUB ASSEMBLY PARTS.
- 4) BLOCK ASSEMBLIES INCLUDE "O" RINGS AND BYPASS VALVE ASSEMBLY.
- 5) FILTER SEAL KIT ASSEMBLY INCLUDES ALL SOFT SEALS EXCEPT ELEMENT GROMMET.
- 6) LF-376 WHEN USED REQUIRES A-LF-831-1 KIT.
- 7) CONTACT FACTORY FOR SPECIAL "G" NUMBER FILTERS AND FOR NONSTANDARD BYPASS SETTINGS.
- 8) FOR 2" PORTED KF30 SEE DWG #D-6025.
- 9) CONTACT FACTORY FOR AVAILABILITY OF VARIOUS ELECTRICAL DIRT ALARMS AND PART NUMBERS OR CONSULT SCHROEDER FILTRATION PRODUCTS CATALOG "SCHROEDER CARTRIDGE DIRT ALARMS" SECTION

N/A = NOT AVAILABLE
N/S = NOT SHOWN

KF30 FILTER SERIES LIST

SERIES	DATE ISSUED	DATE IMPLEMENTED	DESCRIPTION
ORIGINAL			PISTON TYPE BYPASS AND POINTER TYPE DIRT ALARM
A	1-11-84	1-85	PISTON TYPE BYPASS AND POINTER TYPE DIRT ALARM DIFFERENT TUBE AND CAP MACHINING IDENTIFICATION MARKS
B	8-14-85	10-1-85	CARTRIDGE TYPE BYPASS AND MAGNETIC INDICATOR AND DOUBLE "O" RING PLUG FOR NON INDICATOR FILTER
C	1-25-00	1-25-01	STANDARD BYPASS SETTING INCREASED TO 40 PSI.

DISK NO. D-131

PARTS LIST FOR KF30 FILTER



REV. DRAWING NO.
12 D-5590
SCALE: FULL SHT. 2 OF 2