

Patented
Design

GeoSeal™

Did you know that there are currently more than 180 Willfilters in business that are churning out cheap imitations of well-established and highly regarded manufacturers such as Schroeder? Far too often, we have seen customers make purchasing decisions based solely on price, only to be extremely disappointed with the poor quality delivered by low cost imitations. To make the matter worse, the customer often points an accusing finger at the filter housing manufacturer for poor performance rather than the inadequate element he chose to replace the Schroeder original with!

GeoSeal™ is a new patented offering from Schroeder that provides a unique way for OEM's to retain replacement element business and to keep a filter's performance at the level that it was supplied. The idea is brilliantly simple: the critical sealing arrangement between a filter housing and its replacement element takes on a shape other than the standard circular arrangement. Specifically, the element grommet & mating bushing are given a new geometric shape. Figures 1 & 2 show the initial configuration being used.

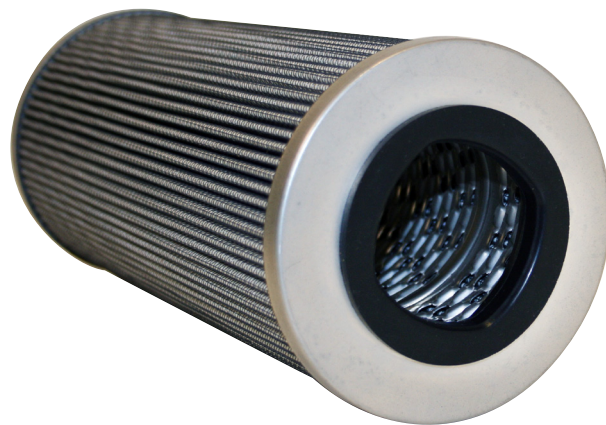


Figure 1: Filter element with GeoSeal™ grommet

Availability

Currently, the GeoSeal™ design is available on the K-size element and in the following Schroeder filter series:

KF30	KF50	KC50	KC65	MKF50
K9	2K9	3K9	KF3	KL3
	MLF1	KF8	RT	

How To Order

To order the filter housing and element incorporated with the GeoSeal™ design:

- "G" is added to the front of the housing model code, and
- "GB" is added to the element model code for RT & KFT (one end of the element has the GeoSeal™; the other end has an integrated bypass valve)
- "G" is added to the element model code for all other housings

Model Code Examples

Conventional housing/element	GeoSeal™ housing/element
RT1KZ10S24S24N	<u>G</u> RT1K <u>GB</u> Z10S24S24N
KF501KZ10S	<u>G</u> KF501K <u>G</u> Z10S

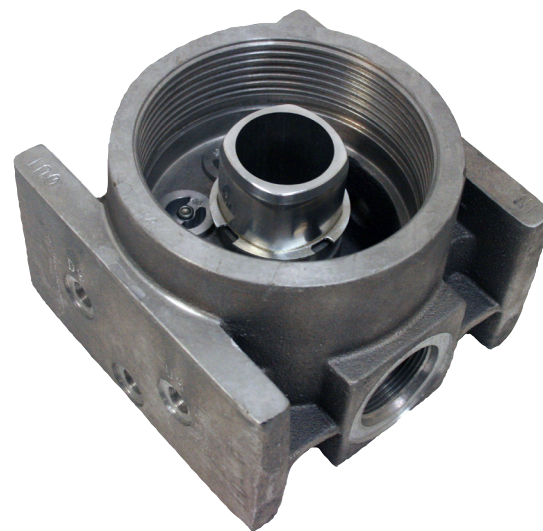


Figure 2: Filter housing (cut-away) with GeoSeal™ grommet bushing

Schroeder
INDUSTRIES

580 West Park Road
Leetsdale, PA 15056
ph. 724.318.1100 | fax 724.318.1200



An ISO 9001:2008 Certified Company

www.schroederindustries.com