

# Auto Flush Filter Cart

*The Schroeder Auto Flush Filter Cart (AFM) can remove solid contaminants and/or water while displaying ISO 4406:1999 code readings.*

The AFM from Schroeder Industries is a user-friendly SMART® filtration cart that allows continuous monitoring of ISO levels in real time. Two K-size filters are included to allow for staged particulate filtration or water removal with particulate filtration. The AFM incorporates a TestMate Contamination Monitor™ (TCM), Siemens PLC & HMI and an RS-232 port with optional TestMate™ Water Sensor (TWS-C).

The Auto Flush Cart (AFM) is capable of flushing, filtering, and monitoring ISO cleanliness levels with user-defined, automatic features. The AFM is designed to transfer fluid through two (2) K-size filters in series for staged particulate or water/particulate removal. Both filters are top-loading and include element indicators in the cap. A particle monitor reads samples from the pump discharge and displays ISO contamination codes on the control panel. The monitor allows the user to input the desired ISO cleanliness codes for the fluid. In auto mode, the system will run until the cleanliness codes are reached. Upon reaching the codes, the pump will stop and the cycle-complete light will come on. When in manual mode, the system will run continuously and display the ISO codes. An optional water sensor is available for providing the water saturation and the temperature of the fluid, both displayed through the monitor. With a water sensor, the monitor will allow the user to input set points for both the water saturation and the ISO codes. An optional variable frequency is also available to give the user the ability to control the fluid flow as necessary.

## Specifications:

|                             |  |
|-----------------------------|--|
| <b>Flow Rating:</b>         | 12 gpm max (45 L/min)  |
| <b>Maximum:</b>             | 1000 SUS (216 cSt)   |
| <b>Fluid Compatibility:</b> | All petroleum based hydraulic fluids, contact factory for other fluids |
| <b>Weight:</b>              | 260 lbs  |
| <b>Available Options:</b>   | Variable Frequency Drive & Testmate Water Sensor                       |

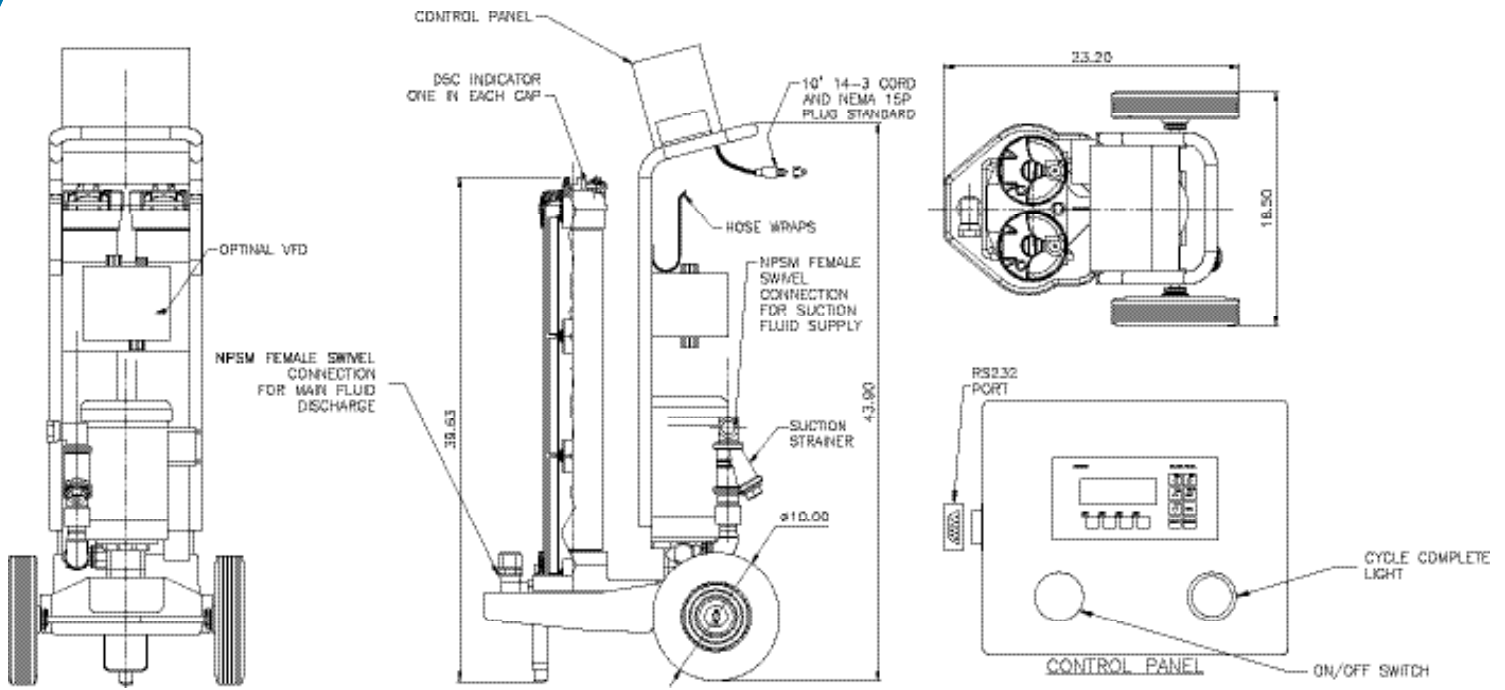
## Applications:

- In-plant service
- Mobile dealer networks
- OEM manufacturers
- Lubricant reclamation/recycling
- Bulk oil transfer
- Roll off cleanliness programs



## Features:

- Automatic and manual mode for filtering fluids
- Automatic shut down feature
- Main pump and particle counter protected with suction strainer and tee-type filter
- Continuous monitoring for displaying ISO code levels
- Capability to download data to PC
- Optional variable frequency drive to control fluid flow
- Optional TestMate™ Water Sensor to measure water saturation and temperature



## Model Number:

| Catalog Model Number | No. of Elements | Element Length | Element Media First Filter              | Element Media Second Filter             | Seals | Options  | Pump Size (gpm) |
|----------------------|-----------------|----------------|---|---|-------|--|-----------------|
| AFM                  | 1               | 09             | E*, Z, EWR**<br>plus 01,03<br>05 10, 25 | E*, Z, EWR**<br>plus 01,03<br>05 10, 25 | B     | N = None (Std.)<br><br>VFD = Variable Frequency Drive<br><br>TWS = Testmate Water Sensor | 12              |
|                      |                 | 18             |   |   |       |  |                 |
|                      | 27              |                |   |   |       |  |                 |
|                      | 2               | 09             |   |   | V     |  |                 |
|                      | 3               | 09             |   |   |       |  |                 |

### Notes:

\* E media elements are only available in 03, 10 and 25 microns.

\*\* Water removal (W) elements are indicated by an "EWR" in the part number and are not followed by a 01,03,05,10 or 25.

\*\*\* The number of elements, element length, and seals will be identical for both filter housings.



580 West Park Road  
Leetsdale, PA 15056 • USA  
p. (724) 318-1100 • f. (724) 318-1200