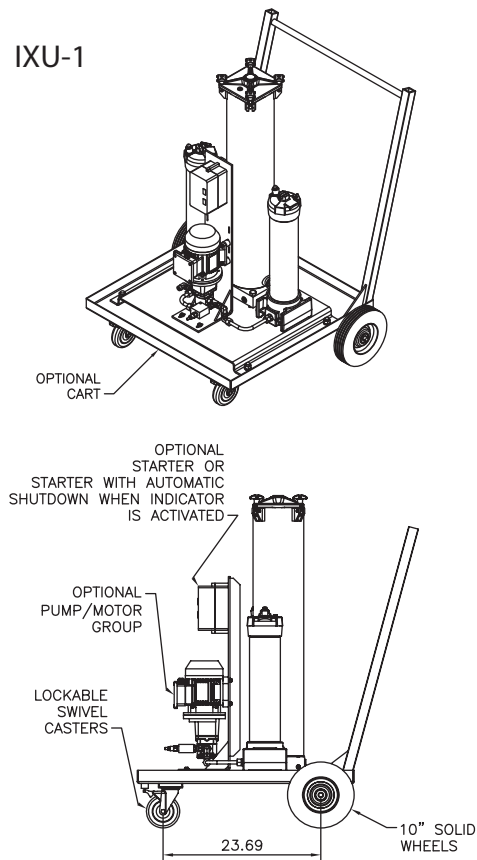


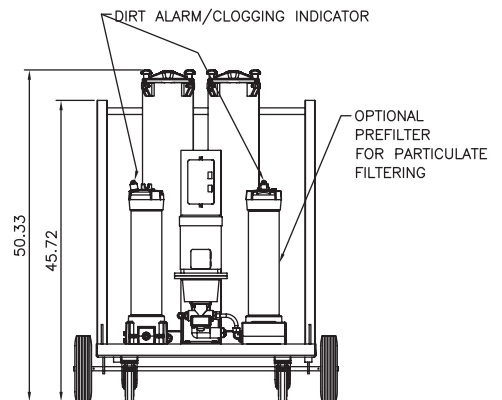
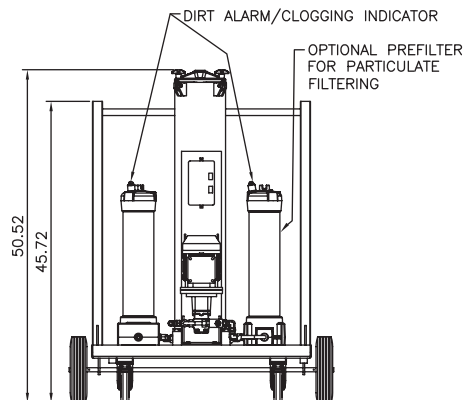
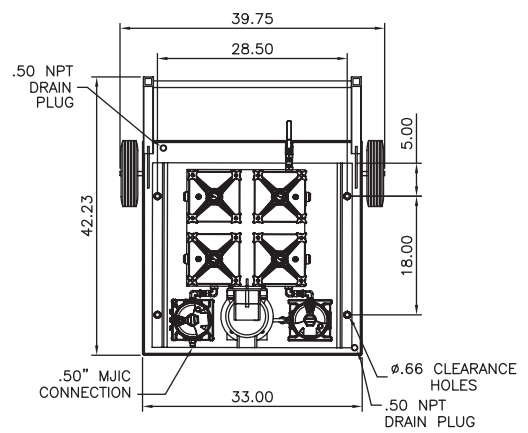
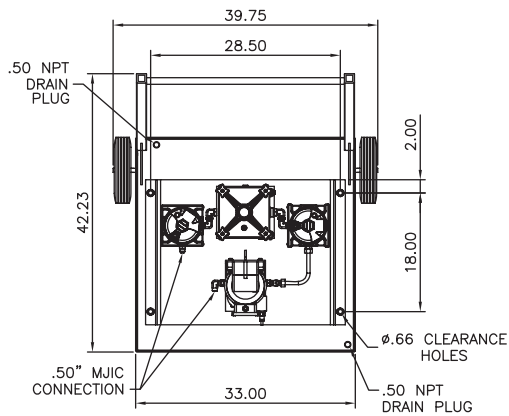
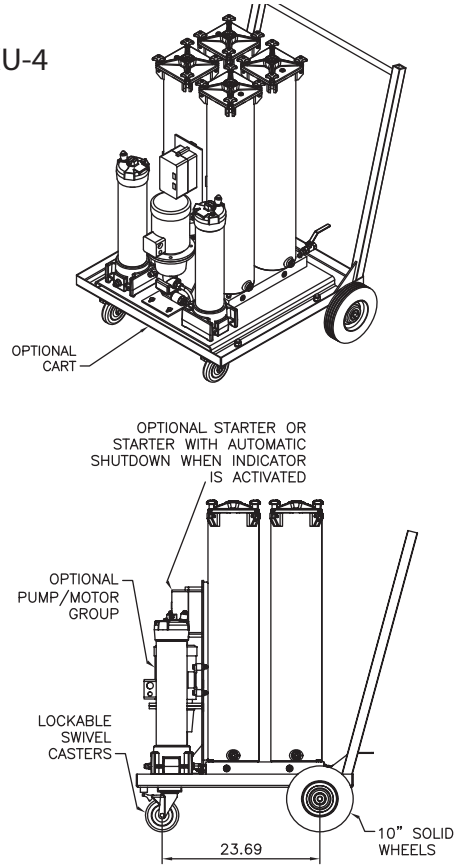
# Ion eXchange Unit

**IXU**

IXU-1



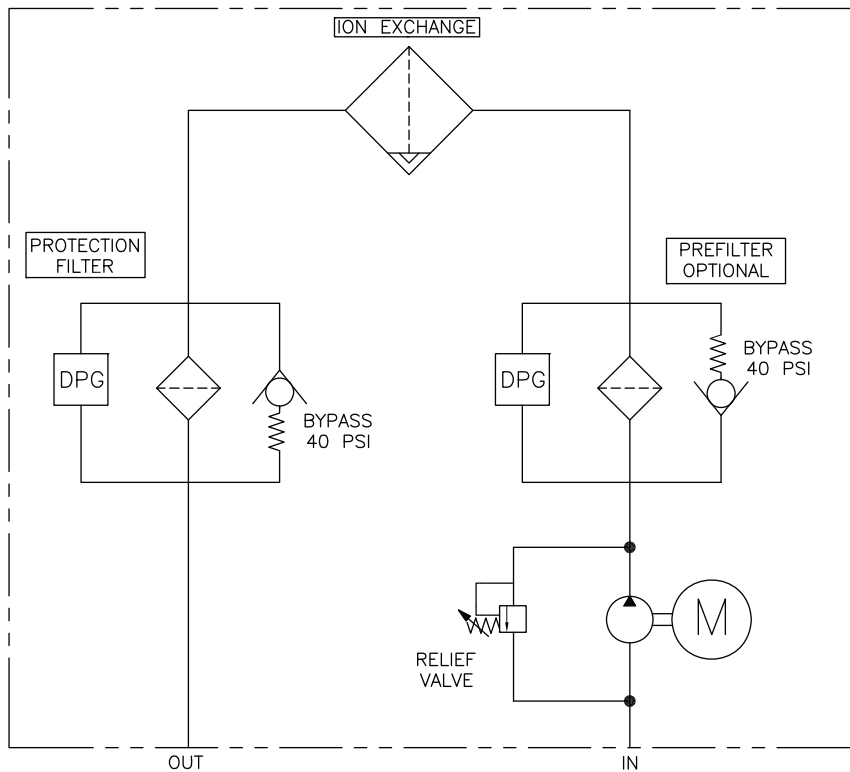
IXU-4



# Ion eXchange Unit

This easy to service ion exchange unit of the IXU series is used for conditioning flame resistant, HFD-R-based hydraulic and lubrication fluids. They effectively remove acidic products of decomposition caused by hydrolysis and/or oxidation of the fluid. The units are applied to hydraulic and lubrication oil tanks of up to 20,000 l with volumetric flow of up to approximately 2.4 gpm (9 l/min) in the bypass flow. Mobile or stationary IXU are available. The IXU uses Ion eXchange Element (IXE) filled with ion exchange resin.

- Longer oil change intervals
  - Increase in the lifetime of operating fluids and components
  - Higher machine availability
  - Reduction in functional problems, e.g. with servo valves
  - Easy to service unit through
    - Component replacement without tools
    - Filter elements can be removed with the cover pointing “upward”
  - Ideal to combine with type SVD dewatering units
  - Available to service as complete unit, modular system for retrofitting existing bypass circuits or for OEM
  - Visual dirt alarm® provided on all models
- 
- Power plants
  - Steel industry
  - Other applications with ester-based, flame resistant fluids



## Description

TCM  
TCM-FC  
TSU  
TMU

## Features

TPM  
TIM  
TMS  
CTU  
TWS-C  
ET-100-6  
HMG 3000

## Applications

EPK  
HTB  
GS  
Trouble  
Check Plus  
Test Points

## Hydraulic Circuit

Adapters  
Hose  
Joiners  
Microflex  
Hose  
Pressure  
Limiters  
Pressure  
Gauges  
Test Kits  
Probalizer  
Filtration  
Station  
MFS, MFD  
AMS, AMD  
KLS, KLD  
AKS, AKD  
KLC  
X Series  
MTS  
HFS  
SVD  
TDS-A  
TDS-E

**IXU**

Appendix

# Ion eXchange Unit

## Specifications

Neutralization Number:	< 0.1 mg KOH/g possible
Flow Rating:	IXU-1: 0.5 gpm (2.2 l/min) IXU-4: 2.5 gpm (8.9 l/min)
Max. Operating Pressure:	87 psi (6 bar)
Suction Pressure @ Inlet:	-7.25 to 14.5 psi (-0.4 to 1 bar)
Viscosity Range:	80 to 400 SUS (15 to 80 cSt)
Fluid Compatibility:	HFD-R (Fire-Resistant / Phosphate-Based Fluids)
Operating Temperature :	32°F to 104°F (0 to 40°C) <80% = Relative humidity (non-condensing)
Hydraulic Connection:	1/2" (-8) Male JIC Inlet and Outlet
Seals:	Viton®
Pump Type:	Gear (Pump optional - see Box 4 below)
Power Consumption:	0.25 - 0.6 kW, depending on motor and voltage
Length of Electrical Cable:	30 ft. (10 m)
Noise Level:	<80 dB at 3 feet (1 m)
Storage Temperature:	32°F to 140°F (0°C to 60°C)

## Model Number Selection

### How to Build a Valid Model Number for a Schroeder High Viscosity X Series Filter Skid:

BOX 1	BOX 2	BOX 3	BOX 4	BOX 5	BOX 6	BOX 7	BOX 8	BOX 9
IXU								

**Example:** NOTE: One option per box

BOX 1	BOX 2	BOX 3	BOX 4	BOX 5	BOX 6	BOX 7	BOX 8	BOX 9
IXU	1	M	G	F	10	C	05	PKZ

BOX 1	BOX 2	BOX 3	BOX 4	BOX 5
<b>Filtration Unit</b>	<b>Flow Rate</b>	<b>Transport</b>	<b>Pump</b>	<b>Connection Voltage</b>
IXU	1 = 0.5 gpm (2.2 l/min) 4 = 2.5 gpm (8.9 l/min)	M = mobile S = stationary	G = gear pump X = without pump	F = 230 V / 60 Hz, 3 Phase J = 115 V / 60 Hz, 3 Phase K = 460 V / 60 Hz, 3 Phase N = 575 V / 60 Hz, 3 Phase

BOX 6	BOX 7	BOX 8
<b>Prefilter</b>	<b>Clogging Indicator</b>	<b>Post Filter</b>
05 = with 5µ element 10 = with 10µ element X = without prefilter	C = differential pressure indicator – electrical	05 = with 5µ element 10 = with 10µ element

BOX 9	
Accessories	
PKZ = with on/off switch and overload protective motor switch	FA2 = with on/off switch, overload protective motor switch and cut-out when filter clogged (does not require neutral wire in power supply)
FA1 = with on/off switch, overload protective motor switch and cut-out when filter clogged (requires neutral wire in power supply)	

## Replacement Element Part Numbers

Ion Exchange Element:	IXE36-5.5
Note:	Elements are <u>not</u> furnished with IXU assembly unit.
Prefilter and Postfilter Elements:	KKZ5V (5µ) KKZ10V (10µ)