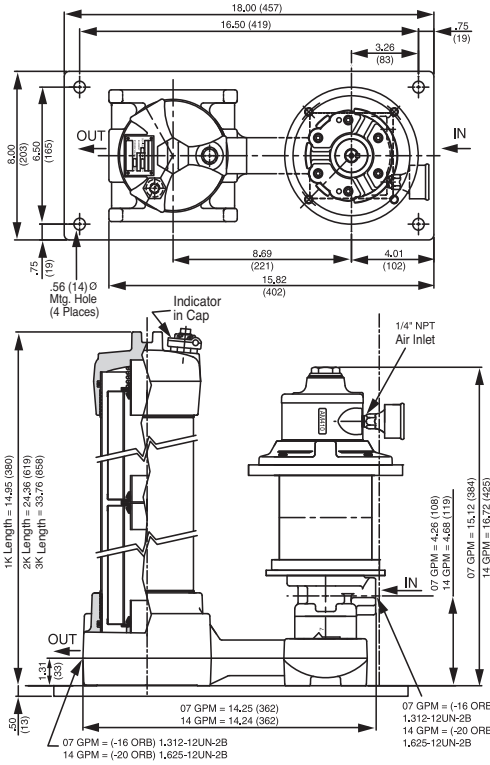


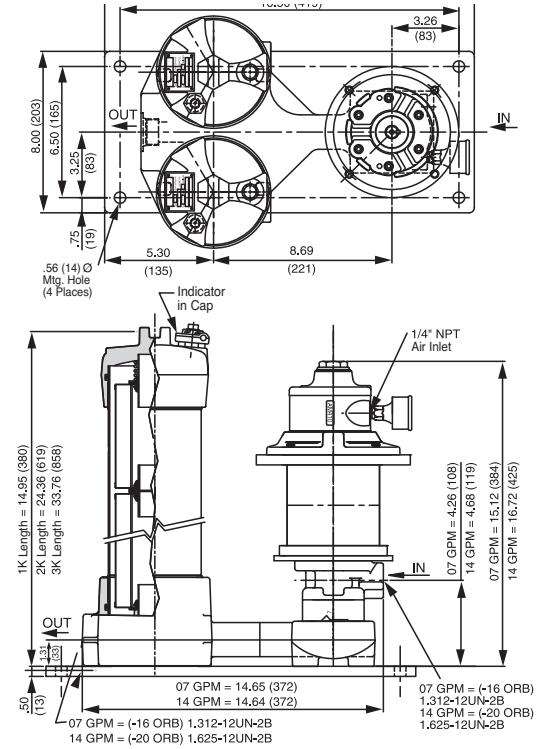
Air-Operated Kidney Loop Systems



**AKS
AKD**



AKS



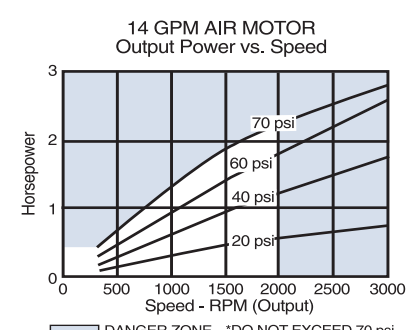
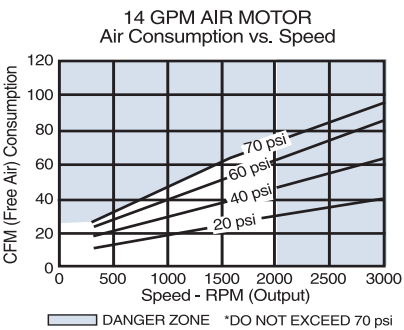
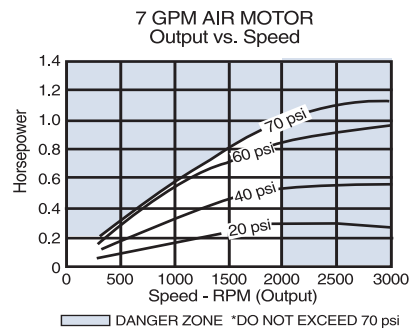
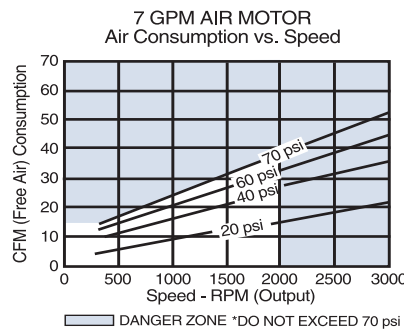
AKD

Metric dimensions in ().

Description

Schroeder now offers a kidney loop filtration system with a pneumatic motor in place of the standard electric motor. The pneumatic motor offers the same flow capability using the same components, but without the need for an electrical outlet. This provides a major advantage in the application of this unit. Without the need for an electrical outlet, it is more portable than the standard electric-motored skids and carts.

Because most trucks and industrial machinery are already equipped with an air compressor, a simple connection to the 1/4" NPT port will easily power the 1.5 HP (or 4.0 HP) motor. At 70 psi, and 2000 rpm, this motor consumes less than 40 cfm (70 cfm for the 4.0HP motor) of compressed air. Because no electricity is used, the pneumatic motor is ideal for working in hazardous environments such as mines.



Note: Performance data represents a 4-vane model with no exhaust restriction.



Air-Operated Kidney Loop Systems

- Supplementing in-line filtration by system filters when adequate turnover cannot be attained
- Large volume systems requiring multiple filters in different locations
- Cleaning up a hydraulic system following component replacement
- Ideal location for water removal
- Field applications on service trucks

Applications

Specifications

Flow Rating:	7 gpm (26.5 L/min) max and 14 gpm (53.0 L/min) max
Maximum Viscosity:	1000 SUS (216 cSt) Higher viscosity version available. Contact factory for details.
Fluid Temperature:	25°F to 150°F (-4°C to 65°C) For higher temperature applications contact factory.
Bypass Valve Setting:	Cracking: 30 psi (2 bar)
Material:	Manifold and cap: Cast aluminum Element case: Steel
Compatibility:	All petroleum based hydraulic fluid. Contact factory for use with other fluids.
Element Change Clearance:	8.50 (215) 1K

How to Build a Valid Model Number for Schroeder Air-Operated Kidney Loop Systems:

BOX 1	BOX 2	BOX 3	BOX 4	BOX 5	BOX 6	BOX 7
<input type="text"/>	<input type="text"/>	<input type="text"/>	<input type="text"/>	<input type="text"/>	<input type="text"/>	<input type="text"/>

Example: NOTE: One option per box

BOX 1	BOX 2	BOX 3	BOX 4	BOX 5	BOX 6	BOX 7
AKS	1	09	Z10	Z05	B	14

BOX 1	BOX 2	BOX 3	BOX 4	BOX 5	BOX 6	BOX 7
Model	No. of Elements	Element Length	Element Media First Filter	Element Media Second Filter (AKD Only)	Seal Material	Pump Size (gpm)
AKS	1	09	E, Z, EWR	E, Z, EWR	B = Buna N	07
AKD	2 3	18 27	plus 01, 03 05 10, 25	plus 01, 03 05 10, 25		14

Notes:

Boxes 2 & 3: When Box 2 equals 2 or 3, Box 3 must be 09.

Boxes 4 & 5: E media elements are only available in 03, 10 and 25 microns.

Water removal (W) elements are indicated by an "EWR" in the part number and are not followed by a 01, 03, 05, 10 or 25.

Box 5: When AKD is ordered, the number of elements, element length, and seals will be identical for both filter housings.

Box 7: GPM only valid with fluids up to 1000 SUS.

07 GPM - 50 CFM at 70 psi.

14 GPM - 70 CFM at 70 psi.

Model Number Selection

- TCM
- TCM-FC
- TSU
- TMU
- TPM
- TIM
- TMS
- CTU
- TWS-C
- ET-100-6
- HMG 3000
- EPK
- HTB
- GS
- Trouble Check Plus
- Test Points
- Adapters
- Hose Joiners
- Microflex Hose
- Pressure Limiters
- Pressure Gauges
- Test Kits
- Probalizer
- Filtration Station
- MFS, MFD
- AMS, AMD
- KLS, KLD
- AKS, AKD**
- KLC
- X Series
- MTS
- HFS
- SVD
- TDS-A
- TDS-E
- IXU
- Appendix