

## Schroeder Industries Adds Filtration Station to Boiler Water Feed Pump Lube System

### Background

ISO regulations mandate a fluid ISO code of 16/14/12 or better in Boiler Water Feed Pump Lube Systems. A customer contacted Schroeder and expressed concerns in regards to their 400 gallon tank's ISO code contamination level of 19/18/16.

### Solution

It was determined that use of an FS Filtration Station as a kidney loop system on the reservoir was the best solution.

### Specifications

**Type of Machinery:** Boiler Water Feed Pump Lube System

**Fluids Addressed:** Water

**Schroeder Product:** FS Filtration Station

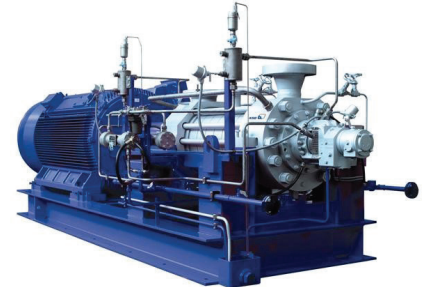
### Results

With an FS Filtration Station in place and after two hours of running the fluid through the kidney loop at 9 gpm, the ISO code dropped to 15/13/10.

Lowering the fluid cleanliness by four (4) ISO classes resulted in an increased bearing life expectancy of up to a factor of two (2).

### Additional Benefits

- A Contamination Sensor (TCM) and a Water Sensor (TWS) are standard equipment on the FS Filtration Stations. These both provide ISO code and water saturation readouts while fluid is being filtered
- A target ISO code can be programmed into the FS Filtration Station to stop the unit automatically after target code is reached
- The FS Filtration Station includes two (2) filter housings (choice of 18" or 27"), for staged filtration. This results in a high Beta rating and high dirt holding capacity.
- The FS Filtration Station gives the choice of 1µm, 3µm, 5µm, 10µm, 25µm and water absorbing elements
- The standard flow rate is 9 gpm. Variable 3-8 gpm options for fluids up to 1000 SUS viscosity are also available.



Filtration Station® (FS)

**Schroeder**  
**INDUSTRIES**

Advanced Fluid Conditioning Solutions®

580 West Park Road | Leetsdale, PA 15056  
 ph. 724.318.1100 | fax 724.318.1200

[www.schroederindustries.com](http://www.schroederindustries.com)



An ISO 9001:2008 Certified Company