

# Low Viscosity Housing | Coalescer

## Applications



POINT OF USE  
FUEL DISPENSING



FLEET FILL / BULK FUEL  
TRANSFER



BULK FUEL  
UNLOADING



PROTECTION FOR  
HIGH-FLOW FUEL  
INJECTION SYSTEMS



BULK TANK  
KIDNEY LOOP /  
RECIRCULATION



Model no. of filter in photograph is:  
LVHCD440NVBTFZ

## Features and Benefits

- Excellent filtration performance in a single pass
- Low pressure loss due to innovative element technology
- Easy to service thanks to intelligent element design
- Easy to adapt to filter housings for the removal of the fine particles in diesel
- The Low Viscosity-Housing Coalescer LVH-C is mainly used for dewatering of diesel. It is especially suitable for applications with large amounts of water that need to be removed in just a single pass
- The Optimicron® filter elements used here ensure that both the required cleanliness and a long service life are achieved
- Available in various sizes, the filters can be optimally integrated into new or existing systems
- The filters are designed according to the AD2000 German rules and regulations for pressure vessels or according to ASME

## Markets

- Industrial
- Bulk Fuel Filtration
- Marine
- Mining
- Agriculture
- Power Generation

## Filter Housing Specifications

**Flow Rating:** 211-476 gpm (800-1800 L/min)

**Inlet/Outlet Connection:** DN50 - 300 (2"-12" DIN)

**Max. Operating Pressure:** 150 psi (10 bar)

**Max. Temperatures:** 122°F (50°C)

**Material Housing:** Stainless Steel or Carbon Steel

**Optional:** Optimicron® Diesel Elements

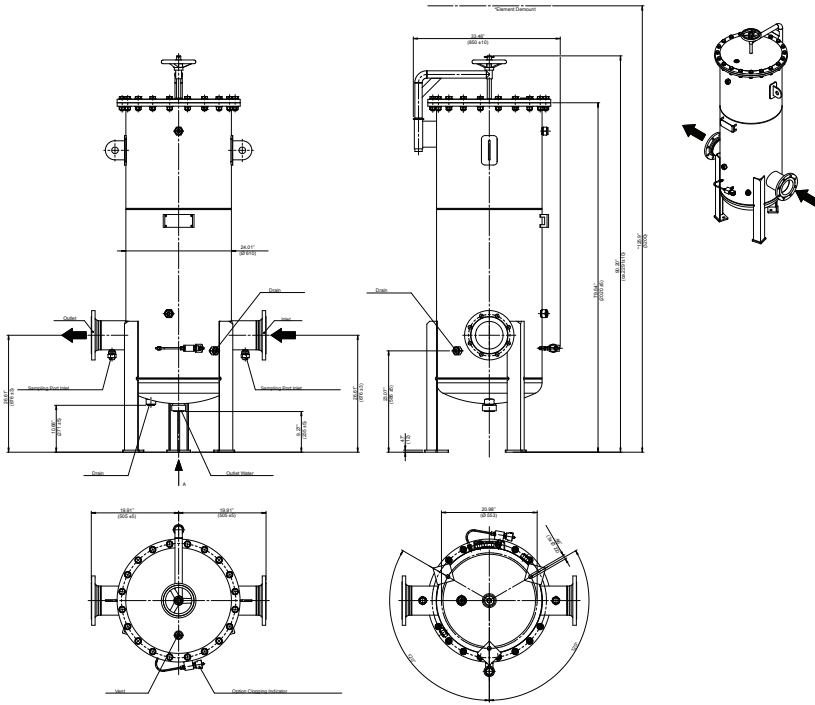
**Schroeder**  
**INDUSTRIES**

Advanced Fluid Conditioning Solutions®

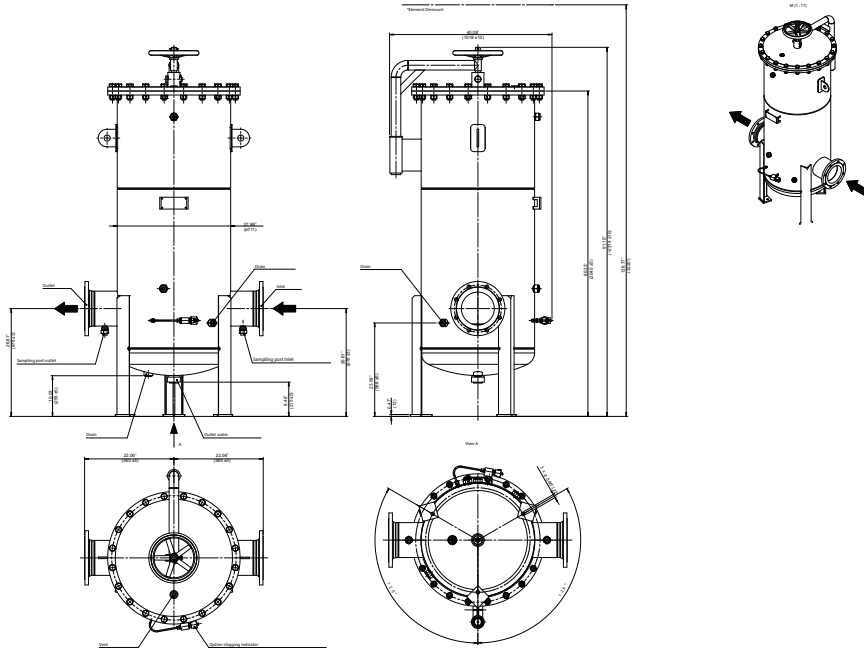
580 West Park Road | Leetsdale, PA 15056  
ph. 724.318.1100 | fax 724.318.1200



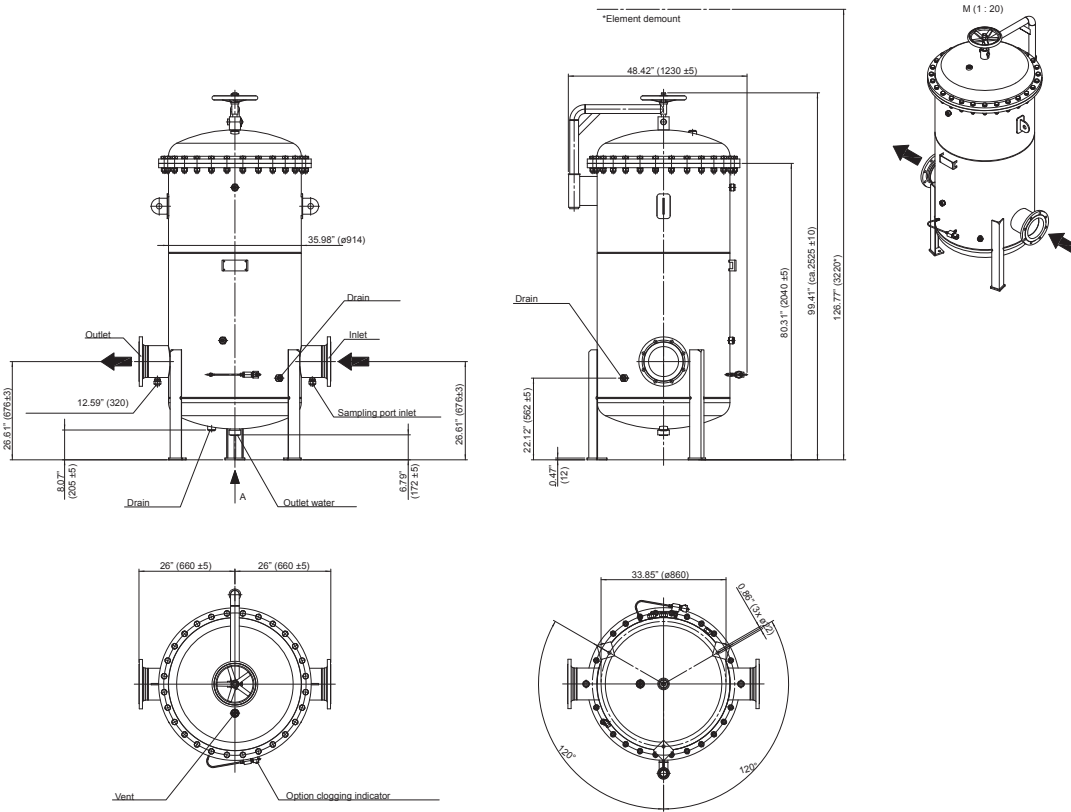
## Dimensions LVH-C-D-4-40



## Dimensions LVH-C-D-6-40



## Dimensions LVH-C-D-9-40



## Filter Calculation

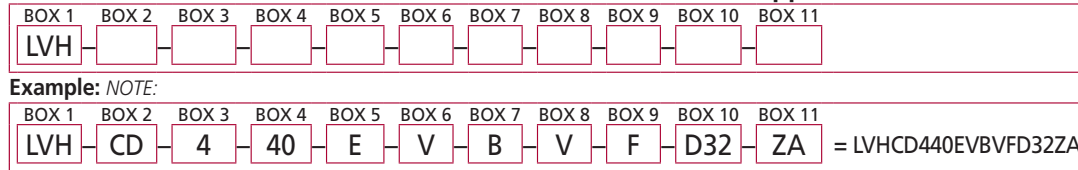
Filter Size (Model)	Maximum Flow Rate	Number of Coalescing Elements	Number of Separator Elements
LVH-CD-4 40	211 gpm	4 pcs.	3 pcs.
LVH-CD-6 40	317 gpm	6 pcs.	4 pcs.
LVH-CD-9 40	476 gpm	9 pcs.	6 pcs.

## Filter Element Selection Coalescing Element Performance Information

Element	Pressure Side Coalescing	
	Designation	Part No.
Separation Element 30"	N32ON-DSZ-SA80F	3910259
Coalescing Element 40"	N42ON-DCZ-CA60F	3910257

## Filter Model Number Selection

### How to Build a Valid Model Number for a Schroeder LVH-C Supplied with Element:



<b>BOX 1</b>	<b>BOX 2</b>	<b>BOX 3</b>	<b>BOX 4</b>	<b>BOX 5</b>
<b>Filter Series</b>	<b>Functions</b>	<b>Filter Size &amp; Number of Elements per Housing</b>	<b>Filter Element Length</b>	<b>Housing Material</b>
LVH	CD = Coalescing	4 = 4 coalescing element & 3 particulate element  6 = 6 coalescing element & 4 particulate element  9 = 9 coalescing element & 4 particulate element	40 = 40"	E = Stainless Steel N = Carbon Steel
<b>BOX 6</b>	<b>BOX 7</b>	<b>BOX 8</b>	<b>BOX 9</b>	
<b>Mounting</b>	<b>Pressure Range</b>	<b>Hydraulic Connection</b>	<b>Sealing</b>	
V = Vertical	B = 10 bar	L = DIN DN 50 (2") R = DIN DN 100 (4") V = DIN DN 150 (6") W = DIN DN 200 (8") Y = DIN DN 300 (12")	F = Viton®	
<b>BOX 10</b>	<b>BOX 11</b>			
<b>Clogging Indicator</b>	<b>Available Certification</b>			
C12 = Differential pressure indicator, electrical D17 = Differential pressure indicator, visual/electrical (230V) D18 = Differential pressure indicator, visual/electrical (240V) D32 = Differential pressure indicator, visual/electrical (PVL2GW.01-V-113) D33 = Differential pressure indicator, visual/electrical (PVL2GW.01-111-16) Z = Without clogging indicator	ZA = ASME Certification			

**NOTES:**  
Filter elements must be ordered separately and installed before initial operation on site

## Fluid Compatibility

### Fuel Oils

- ULSD15, low sulfur diesel and high sulfur diesel
- Biodiesel blends
- Synthetic diesel and blends
- No. 2 fuel oil and heating oil