

Top-Ported Pressure Filter

CF40/DF40



Features and Benefits

- Top-ported pressure filter
- Available with non-bypass option with high collapse element
- Offered in pipe, SAE straight thread and ISO 228 porting
- Integral inlet and outlet female test points option available
- No-Element indicator option available

Up to
45 gpm
170 L/min
4000 psi
275 bar

- NF30
- NFS30
- YF30
- CFX30
- PLD
- CF40**
- DF40**
- PF40
- RFS50
- RF60
- CF60
- CTF60
- VF60
- LW60
- KF30
- KF50
- TF50
- KC50
- MKF50
- MKC50
- KC65
- HS60
- MHS60
- KFH50
- LC60
- LC35
- LC50
- NOF30-05
- NOF-50-760
- FOF60-03
- NMF30
- RMF60
- 14-CRZX10
- 20-CRZX10

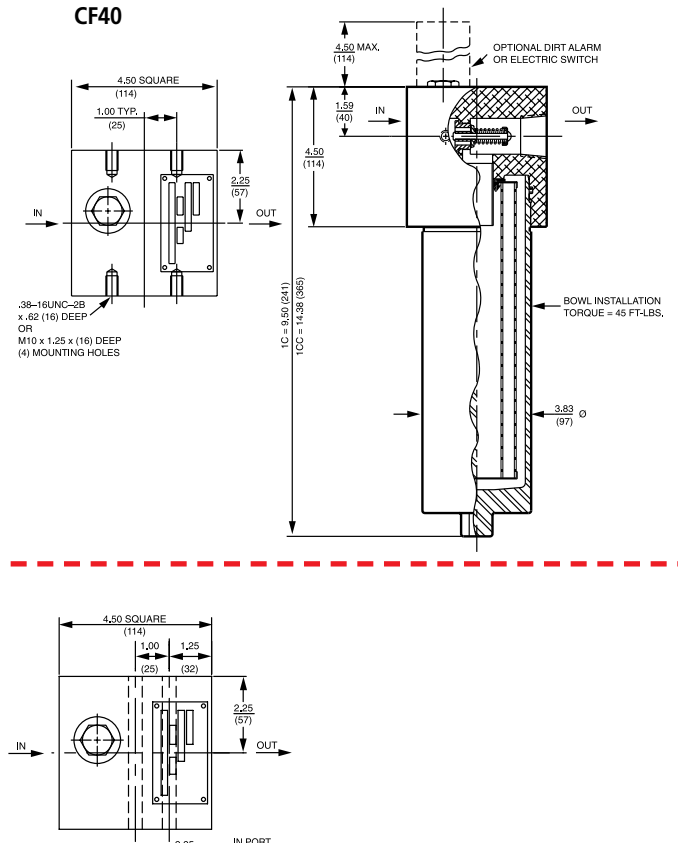
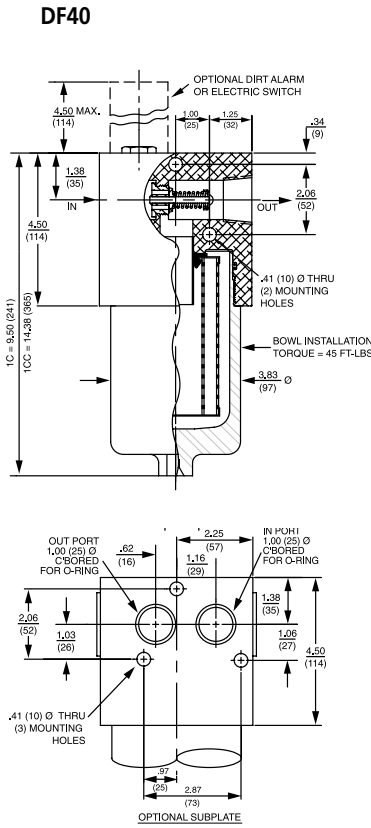
Model No. of filter in photograph is CF401CC10SD5 and DF401CCZ10PD5.

Flow Rating:	CF40 - 45 gpm (170 L/min) for 150 SUS (32 cSt) fluids DF40 - 30 gpm (113 L/min) for 150 SUS (32 cSt) fluids
Max. Operating Pressure:	4000 psi (275 bar)
Min. Yield Pressure:	12,000 psi (828 bar), per NFPA T2.6.1
Rated Fatigue Pressure:	1800 psi (125 bar), per NFPA T2.6.1-2005
Temp. Range:	-20°F to 225°F (-29°C to 107°C)
Bypass Setting:	Cracking: 40 psi (2.8 bar) Full Flow: 72 psi (5.0 bar) Non-bypassing model has a blocked bypass.
Porting Head:	Aluminum
Element Case:	Steel
Weight of CF40/DF40-1C:	14.0 lbs. (6.4 kg)
Weight of CF40/DF40-1CC:	19.5 lbs. (8.9 kg)
Element Change Clearance:	4.00" (100 mm) for C elements 8.75" (219 mm) for CC elements

Filter Housing Specifications

Type Fluid	Appropriate Schroeder Media
Petroleum Based Fluids	All E Media (cellulose), Z-Media® and ASP® Media (synthetic)
High Water Content	All Z-Media® and ASP® Media (synthetic)
Invert Emulsions	10 and 25 µ Z-Media® (synthetic), 10 µ ASP® Media (synthetic)
Water Glycols	3, 5, 10 and 25 µ Z-Media® (synthetic), and all ASP® Media (synthetic)
Phosphate Esters	All Z-Media® and ASP® Media (synthetic) with H (EPR) seal designation
Skydrol®	3, 5, 10 and 25 µ Z-Media (synthetic) and all ASP Media (synthetic) with H.5 seal designation (EPR seals and stainless steel wire mesh in element, and light oil coating on housing exterior)

Fluid Compatibility



Metric dimensions in ().
 Dimensions shown are inches (millimeters) for general information and overall envelope size only.
 For complete dimensions please contact Schroeder Industries to request a certified print.

Element Performance Information & Dirt Holding Capacity

Element	Filtration Ratio Per ISO 4572/NFPA T3.10.8.8 Using automated particle counter (APC) calibrated per ISO 4402			Filtration Ratio per ISO 16889 Using APC calibrated per ISO 11171	
	$\beta_x \geq 75$	$\beta_x \geq 100$	$\beta_x \geq 200$	$\beta_x(c) \geq 200$	$\beta_x(c) \geq 1000$
CZ1/CCZ1	<1.0	<1.0	<1.0	<4.0	4.2
CZ3/CCZ3	<1.0	<1.0	<2.0	<4.0	4.8
CZ5/CCZ5	2.5	3.0	4.0	4.8	6.3
CZ10/CCZ10	7.4	8.2	10.0	8.0	10.0
CCZ25/CCZ25	18.0	20.0	22.5	19.0	24.0
CCZX3	<1.0	<1.0	<2.0	4.7	5.8
CCZX10	7.4	8.2	10.0	8.0	9.8

Element	DHC (gm)	Element	DHC (gm)
CZ1	25	CCZ1	57
CZ3	26	CCZ3	58
CZ5	30	CCZ5	63
CZ10	28	CCZ10	62
CZ25	28	CCZ25	63
		CCZX3	26*
		CCZX10	28*

Element Collapse Rating: 150 psid (10 bar) for standard elements
 3000 psid (210 bar) for high collapse (ZX) versions

Flow Direction: Outside In

Element Nominal Dimensions: C: 3.0" (75 mm) O.D. x 4.75" (120 mm) long
 CC: 3.0" (75 mm) O.D. x 9.5" (240 mm) long

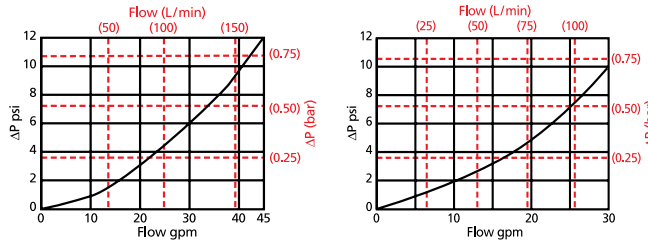
* Based on 100 psi terminal pressure

Top-Ported Pressure Filter

CF40/DF40

$\Delta P_{\text{housing}}$

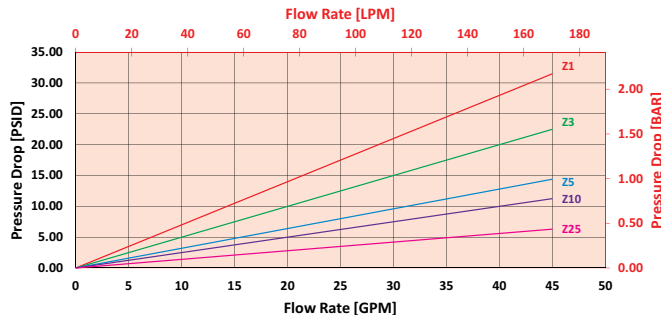
CF40/DF40 $\Delta P_{\text{housing}}$ for fluids with sp gr (specific gravity) = 0.86:



$\Delta P_{\text{element}}$

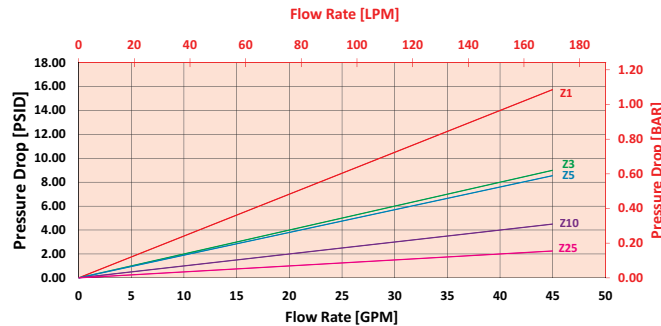
CZ

Element Pressure Drop versus Flow Rate at 32 cSt (150 SUS)



CCZ

Element Pressure Drop versus Flow Rate at 32 cSt (150 SUS)



$$\Delta P_{\text{filter}} = \Delta P_{\text{housing}} + (\Delta P_{\text{element}} * V_f)$$

Exercise:

Determine ΔP_{filter} at 25 gpm (94.6 L/min) for CF401CZ10SD5 using 200 SUS (42.6 cSt) fluid.

Use the housing pressure curve to determine $\Delta P_{\text{housing}}$ at 25 gpm. In this case, $\Delta P_{\text{housing}}$ is 4.5 psi (.31 bar) on the graph for the CF40 housing.

Use the element pressure curve to determine $\Delta P_{\text{element}}$ at 25 gpm. In this case, $\Delta P_{\text{element}}$ is 6 psi (.42 bar) according to the graph for the CZ10 element.

Because the viscosity in this sample is 200 SUS (42.6 cSt), we determine the **Viscosity Factor (V_f)** by dividing the **Operating Fluid Viscosity** with the **Standard Viscosity** of 150 SUS (32 cSt). To best determine your Operating Fluid Viscosity, please reference the chart in Appendix D.

Finally, the overall filter pressure differential, ΔP_{filter} , is calculated by adding $\Delta P_{\text{housing}}$ with the true element pressure differential, ($\Delta P_{\text{element}} * V_f$). The $\Delta P_{\text{element}}$ from the graph has to be multiplied by the viscosity factor to get the true pressure differential across the element.

Solution:

$$\Delta P_{\text{housing}} = 4.5 \text{ psi } [.31 \text{ bar}] \quad | \quad \Delta P_{\text{element}} = 6 \text{ psi } [.42 \text{ bar}]$$

$$V_f = 200 \text{ SUS } (42.6 \text{ cSt}) / 150 \text{ SUS } (32 \text{ cSt}) = 1.3$$

$$\Delta P_{\text{filter}} = 4.5 \text{ psi } + (6 \text{ psi } * 1.3) = 12.3 \text{ psi}$$

OR

$$\Delta P_{\text{filter}} = .31 \text{ bar } + (.42 \text{ bar } * 1.3) = .86 \text{ bar}$$

Pressure Drop Information Based on Flow Rate and Viscosity

Note:
If your element is not graphed, use the following equation:
 $\Delta P_{\text{element}} = \text{Flow Rate} \times \Delta P_f$. Plug this variable into the overall pressure drop equation.

Ele.	ΔP	Ele.	ΔP
C3	0.50	CC3	0.22
C10	0.19	CC10	0.13
C25	0.09	CC25	0.03
CAS3	0.50	CCAS3	0.20
CAS5	0.32	CCAS5	0.19
CAS10	0.25	CCAS10	0.10
		CCZX3	0.29
		CCZX10	0.26

